

# *Special* **SCHOOLS**

**IN BRITAIN**  
**2011-2012**

**The number one source of reference to  
the skills, services and expertise offered by  
special schools and further education centres**

**[www.specialneedsuk.org](http://www.specialneedsuk.org)**

The dedicated website for parents and professionals  
interested in special needs

**£10.00**



SCHOOL

# THE LODDON

Pathway to a fulfilling life



The Loddon School was established by Marion Cornick in 1988 as a charitable trust. An inspiring place, staffed by enthusiastic and expert staff, and operating 52 weeks a year, we provide a much needed school in the South of England for children with autism, severe and complex learning difficulties and challenging behaviours, who can no longer live at home.

## EDUCATION & CARE



The school provides a unique and innovative style of personalised learning (PLUSS), centred on each child's learning objectives and preferred activities, and offers a waking hours curriculum to reinforce their development. Every child receives the best of care, benefits from outings, trips home and inclusion in the wider community. The school, also the children's home, where each child has their own personalised bedroom, operates a nurturing, positive work environment where staff show that learning can be fun and enjoyable. Our teachers and carers are leaders in their field and offer our children the opportunity to learn all the life skills required to share in a fulfilling life.

## TRAINING



The school is not just a learning environment for children; we provide comprehensive training programmes for all our staff, including NVQ from our registered NVQ Centre, and our own in-house developed, BILD accredited, PROACT-SCIPr-UK® philosophy. The school provides training to over 200 external organisations.

## ENVIRONMENT



Our ten acre site, with well maintained and extensive facilities, includes an indoor swimming pool, a leisure barn and stables and paddocks. The grounds provide an ideal setting, and the freedom, for our special children to learn and grow in safety and comfort.



The school has DCSF approval and is inspected by OFSTED, who have scored the school as "outstanding" in 2007, 08, 09 and 10. The school is ISO 9001:2008 registered and manages continuous improvement to its quality management system.

For information about placement at our school, or for help, advice, training and support, please contact:

The Principal  
The Loddon School  
Wildmoor Lane  
Sherfield-on-Loddon  
Hook, Hampshire  
RG27 0JD

Email: [info@loddonschool.co.uk](mailto:info@loddonschool.co.uk)  
Web: [www.loddonschool.co.uk](http://www.loddonschool.co.uk)  
Helpline: 01256 882394



# Special **SCHOOLS**

I N B R I T A I N

<b>Useful Organisations</b>	<b>4</b>
Organisations of interest in special needs	
<b>Centre Academy</b>	<b>5</b>
Learn more about what Centre Academy can offer those with learning challenges	
<b>The Hesley Group</b>	<b>7</b>
Services for children with complex needs	
<b>George Crowther</b>	<b>9</b>
Independent professional educational advice	
<b>Wings School</b>	<b>10</b>
A holistic approach to emotional, social and behavioural difficulties	
<b>ICAN Profile</b>	<b>11</b>
Helping children communicate for life	
<b>Lucid Research</b>	<b>12</b>
Improve reading and listening comprehension	
<b>Special Needs Schools and Centres</b>	<b>13</b>
A list of schools and centres throughout the UK dedicated to special needs	
<b>Special Needs Further Education</b>	<b>89</b>
A list of further education establishments throughout the UK dedicated to special needs	
<b>Quick Reference Charts</b>	<b>100</b>

**Production Manager:** Claire Mackle

**Sales Executives:** Julie O'Rourke, Jackie Quarterman

**Publisher:** Derek Rogers

**Copies of Special Schools In Britain can be purchased at £10.00 per copy via the following routes:**

**Copy Sales Hotline:** 01527 834465 **Copy Sales Fax:** 01527 880815

**E-Mail Requests:** [julie.orourke@centaur.co.uk](mailto:julie.orourke@centaur.co.uk) **Website requests:** [www.specialneedsuk.org](http://www.specialneedsuk.org)

**Special Schools in Britain is published by Ascent Publishing Ltd, Sugar Brook Court, Aston Road, Bromsgrove, B60 3EX.**

**Ascent Publishing is part of the Centaur Media PLC Group of Companies.**

© Copyright 2011 Ascent Publishing Ltd. All rights reserved.

No part of this work may be produced or stored in an information retrieval system (other than short extracts for the purpose of review) without the express permission of the publishers given in writing.

Although every effort has been made to ensure the accuracy of information in this guide the publishers cannot be held responsible for any inaccuracy which is a result of information provided by the participating schools. Readers are notified that the information for this publication was collated in 2011 and should always check with the establishments themselves regarding detailed information.

## Useful Organisations

### **Afasic - Unlocking Speech & Language**

20 Bowling Green Lane, London EC1R 0BD  
Tel: 020 7490 9410 Fax: 020 7251 2834

Afasic is the UK charity offering information and support to parents and carers of children with speech, language and communication impairments. Services include a Helpline on 08453 555577, publications, training workshops, membership, local contacts, and a website. Afasic also works with professionals concerned with this hidden disability. Registered Charity No. 1045617.

**Website: [www.afasic.org.uk](http://www.afasic.org.uk)  
Email: [info@afasic.org.uk](mailto:info@afasic.org.uk)**

### **Calvert Trust**

Telephone Exmoor: 01598 763221 &  
Lake District: 01768 772255 & Kielder: 01434 250232

**Specialist Outdoor Activities Centres for people with physical, sensory & learning disabilities.**  
In the beautiful countryside of Britain's National Parks at: **Exmoor - Lake District - Northumberland.**  
Activity courses or school groups, individuals, families & friends.  
Self-catering accommodation also available.  
Activities include sailing, canoeing and climbing.

**[www.calvert-trust.org.uk](http://www.calvert-trust.org.uk)**

### **Dyslexia Action**

Assessment • Education • Training

**A national charity  
working to improve  
the lives of people  
with dyslexia**

- We**
- Provide free advice and information
  - Specialise in assessments (dyslexia tests)
  - Provide specialist tuition for children and adults
  - Have our own bursary fund to help with the cost of lessons
  - Specialise in teacher training
  - Offer a range of teaching and learning materials
  - Provide workplace consultancy

*Our services are available through our 26 centres  
and 97 teaching locations around the UK*

Park House, Wick Road, Egham, Surrey TW20 0HH  
T 01784 222300 F 01784 222333 W [www.dyslexiaaction.org.uk](http://www.dyslexiaaction.org.uk)

### **The British Psychological Society**

**St Andrews House, 48 Princess Road  
East, Leicester LE1 7DR  
Tel: 0116 254 9568**

Publishers of the Directory of Chartered Psychologists and Expert Witnesses.

The Directory helps people find local psychologists with the specific skills they need.

A fully-searchable version is available via the Society's website.

**Website: [www.bps.org.uk/directory](http://www.bps.org.uk/directory)  
Email: [enquiry@bps.org.uk](mailto:enquiry@bps.org.uk)**

### **CReStED Dyslexia - Register of Schools**

Greygarth, Littleworth, Winchcombe,  
Cheltenham, GL54 5BT Tel/Fax: 01242 604852

CReStED produces a Register of schools approved for their dyslexia provision. Schools are visited regularly to ensure standards are maintained.

**Contact CReStED for your free copy  
of the Register.**

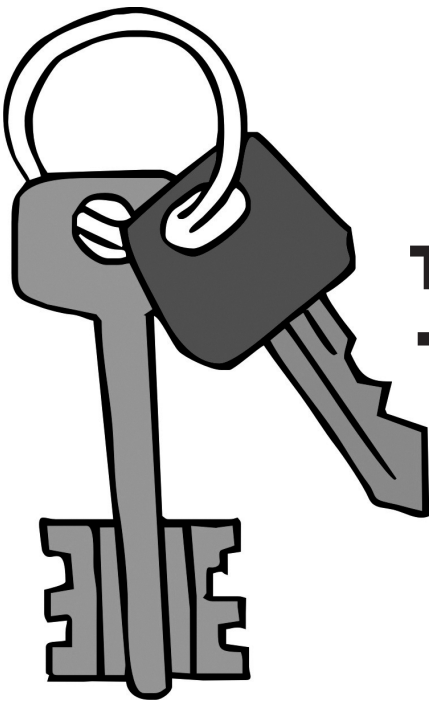
**Website: [www.crested.org.uk](http://www.crested.org.uk)  
Email: [admin@crested.org.uk](mailto:admin@crested.org.uk)**



P.O.Box 107, North Shields, Tyne & Wear NE30 2YG  
Tel/Fax: 0191 272 8600

EQUALS is a registered charity committed to supporting the work of teachers of pupils with learning difficulties and disabilities within special and mainstream education. EQUALS produces curriculum support materials and organises national conferences and workshops.

**[admin@equalsoffice.co.uk](mailto:admin@equalsoffice.co.uk)  
[www.equalsoffice.co.uk](http://www.equalsoffice.co.uk)**



## The key to success

**At both Centre Academy London and Centre Academy East Anglia, we offer an excellent education while also teaching the skills and coping strategies that enable students with a variety of learning difficulties to succeed.**

**All schools are, of course, unique—but the Centre Academy program has long been recognised as the most pioneering within special needs education. Here's why:**

– We accept a broad range of ages; at CA London (day students) from 9 to 18; at CA East Anglia (day and boarding) from 8 to 16. This eliminates the anxiety, common to children facing learning challenges, of having to move from one school to another.

– We address an equally broad range of learning challenges, including Dyslexia, AD/HD, Dyspraxia, Asperger Syndrome, Speech and Language problems, to name a few.

– Admission is on a case-by-case basis; the Centre Academy Schools do not follow a 'one size fits all' approach.

– We 'cap' our enrolment to ensure very small classes; at CA London, a total of 60 students; at CA East Anglia, a total of 40 students. Most class sizes are 5 or 6 students, with significant amounts of one-to-one instruction to complement classroom work.

– We follow the National Curriculum from Key Stage 2 through GCSE, and we also offer the Life Skills program for students who are more vocationally oriented.

– We are the only school in the UK, including mainstream schools, also to offer the American High School Diploma. The gateway to university, the Diploma is not examination-based but instead involves a system of continual assessment.

– All universities in the UK recognize the Diploma. Note also that we have never had a Diploma graduate who has not gone directly to university.

**Tel 01449 736404 or 0207 7382344**

## Useful Organisations

### Hillingdon Manor School

Harlington Road, Hillingdon, Middlesex  
UB8 3HD Tel/Fax: 01895 813679

Hillingdon Manor School is a specialist school for pupils with autistic spectrum disorder (ASD) and other associated difficulties. The school takes from age three to 19 and currently has 120 children on roll and employs over 60 specialist staff, including Therapists (SALT, OT, Drama & Movement and Music).

[www.hillingdonmanorschool.org.uk](http://www.hillingdonmanorschool.org.uk)

### The Hyperactive Children's Support Group

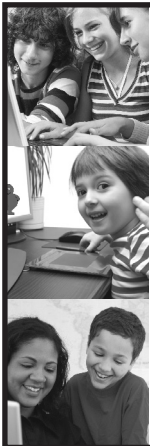
71 Whyke Lane, Chichester, West Sussex  
PO19 7PD Tel: 01243 539966

Information, advice and literature available to parents, carers and professionals.

We focus on non-medication, nutritional/dietary approaches for Hyperactivity/ADHD youngsters.

SAE for introductory pack.

Website: [www.hacsg.org.uk](http://www.hacsg.org.uk)  
E-mail: [hyperactive@hacsg.org.uk](mailto:hyperactive@hacsg.org.uk)



Exam access  
assessment

Boost literacy  
and learning

Diagnostic  
assessment and  
dyslexia screening

# Lucid

Specialists in computerised  
assessment and intervention

[www.lucid-research.com](http://www.lucid-research.com)

T: 01482 882121  
[info@lucid-research.com](mailto:info@lucid-research.com)

FREE demo CD



As a professional working with SpLD students you *cannot* afford to ignore the benefits offered by membership of the **Professional Association of Teachers with Specific Learning Difficulties**

#### Patoss offers:

Professional Indemnity Insurance for certain categories of membership; Assessment Practising Certificate; advice on assessment for examinations; Index of Tutors; legal helpline; annual conference & other training events; journals; newsletters; publications; membership – individual and corporate.

website: [www.patoss-dyslexia.org](http://www.patoss-dyslexia.org)  
tel: 01386 712650 fax: 01386 712 716 email: [patoss@sworcs.ac.uk](mailto:patoss@sworcs.ac.uk)



## Children's Services

Providing residential care and education services for children with complex needs, challenging behaviours and severe learning difficulties mainly arising from autism.

With over 35 years experience, together with the employment of some of the best specialists in behavioural services, The Hesley Group enables people with complex needs to achieve their full potential.

Fullerton House School - Mixed Gender, 8-19 years

Wilsic Hall School - Mixed Gender, 11-19 years

High quality facilities including a range of classrooms and flexible spaces to create positive learning environments. Student accommodation is individualised and supports development of life skills

[enquiries@hesleygroup.co.uk](mailto:enquiries@hesleygroup.co.uk)



## Useful Organisations

### **Pearson Assessment** **PsychCorp** from PEARSON

80 Strand, London WC2R 0RL  
Tel: 0845 630 8888 Fax: 0845 630 5555

Pearson Assessment is a test publisher for special educational needs, providing standardised assessments for use in screening and statementing.

Ideal for teachers, SENCOs and Psychologists. Contact us for a free catalogue.

[www.psychcorp.co.uk](http://www.psychcorp.co.uk)  
Email: [info@psychcorp.co.uk](mailto:info@psychcorp.co.uk)

### **The Peter Rigby Trust** The London Centre for Children with Cerebral Palsy

54 Muswell Hill, London N10 3ST  
Tel: 020 8444 7242 Fax: 020 8444 7241

The London Centre provides Conductive Education for young children with Cerebral Palsy within it's parent and child groups that run across the week and in intensive block sessions held during the school holiday periods.

The Centre's school for children with Cerebral Palsy (aged 3-11 years) is DCSF approved and provides an integrated approach of Conductive Education and the National Curriculum. Registered Charity No. 1124524

[www.cplondon.org.uk](http://www.cplondon.org.uk)  
Email: [info@cplondon.org.uk](mailto:info@cplondon.org.uk)

**Make sure your School, College,  
Centre or Useful Organisation  
is in the next edition...**

**Give us a call on 01527 834465  
or email [julie.orourke@centaur.co.uk](mailto:julie.orourke@centaur.co.uk)**

# GEORGE CROWTHER

## **Consultant Educational Psychologist Clinical & Developmental Psychologist Education & Child Care Consultant**

- Dyslexia
- Learning Difficulties
- Pre-school Assessment
- Sensory or Physical Difficulties
- Autistic/Asperger's/ASD
- Emotional & Behavioural Difficulties
- Deficits of Attention, Motor Control & Persistence (DAMP)
- Special Educational Needs Assessment
- Grammar School Selection
- Which School
- Vocational & Careers Guidance
- International Commissions
- Connexions
- Able, Gifted + Talented
- Dyspraxic/DCD
- Speech and Language Delay/Disorder
- Attention Deficit Hyperactivity Disorder (AD/HD)
- Pervasive Developmental Disorder (PDD)
- Poor School Report
- Poor SATS Results
- Special Educational Needs + Disability Tribunal (SENDIST)
- Common Entrance
- Home Visits
- Counselling/Personal matters
- Inclusion

## **Independent Professional Educational Advice**

Little Hill, Colley Manor Drive, Reigate, Surrey RH2 9JS

Telephone & Fax: Reigate (+44) 01737 243286

Mobile: 07710 214349

Website: [www.georgecrowther.co.uk](http://www.georgecrowther.co.uk)

Director of Education Law Association (ELAS)

Member of Independent Tribunal Service

Single Joint Expert (SJE) Witness – The Law Society

Member of the Association for Child and Adolescent Mental Health (ACAMH)

Member of the Association of Educational Psychologists (AEP)

Member of the National Association for Gifted Children (NAGC)

Member of the National Association for Special Education Needs (NASEN)

Member of Young Minds

Fellow of the Royal Institution of Great Britain

# We believe you can fly

Wings School in Cumbria and Wings Notts School in Nottinghamshire are independent, residential special schools and children's homes led by the award-winning Pam Redican. The first Wings School opened in 2003 with the clear aim of becoming a centre of excellence in education and looking after children who have emotional, social and behavioural difficulties. The school quickly established itself as a leader in this field and to cope with an ever increasing demand for placements from local authorities, a second school, Wings Notts, was opened in January 2010, with the aim to replicate the highly successful work of its sister school.

The Wings Schools in many ways share the expectations of mainstream schools, for example, in the curriculum they offer, their belief in the importance of examinations and qualifications, the shape of the school day and the standards they hold for work and behaviour. However, for many of their young people their experience of previous schools has been an unhappy one. They have felt failures, unable to work well and prone to giving up quickly. They have become angry and upset very quickly over small things and have had difficulty making and keeping friends. They have felt as though they are always in trouble or getting things wrong and often stayed away from school whenever they could. They have needed something very special to rebuild their confidence.

The Wings Schools provide that very special something through the quality of teaching and care. Pam Redican, who earned a prestigious Plato Award for dynamic school leadership in the North West of England in 2000 and the Pride of Britain Best Teacher Award in 2007, is confident that the

outstanding judgement given by Ofsted in March 2008 is fully justified. She has a very clear view of what a Wings school does: "We manage behaviour in a way that is consistent, supportive and positive, enabling our young people to develop self-awareness and self-management, rather than relying on external controls. We help them to recognise how the way they think or act can cause problems for themselves or others and learn different ways of handling these situations. We give them new ways of thinking about themselves, their feelings and their relationships that make them happier and more relaxed."



A Wings School pays attention to anything that helps young people to learn better in class. It takes the results of research into the way pupils learn and deliberately arranges its teaching styles and classroom environments to make the most of this information.

It also recognises the anxieties that young people have about work and relationships and supports them in seeing challenges as opportunities to become better in some way. As part of this process, it makes a special point of providing each child with a wide variety of new experiences and then helping those who discover a particular talent or interest to develop it.

### *"We believe you can fly"*

is the ethos we hold for all our young people.

**Tel: 015395 62006 Fax: 015395 64811**

**E mail: [info@wingsschool.co.uk](mailto:info@wingsschool.co.uk)  
[info@wingseastschool.co.uk](mailto:info@wingseastschool.co.uk)**

**Website: [www.wingsschool.co.uk](http://www.wingsschool.co.uk)  
[www.wingseastschool.co.uk](http://www.wingseastschool.co.uk)**

# I CAN - helping children communicate for life

Communication is the essential 21st century life skill – the foundation on which children learn, achieve and make friends. In some areas in the UK, as many as half of all children are arriving at primary school without the speech, language and communication skills they need. In disadvantaged areas, it can be as high as 80%. In addition, one in ten (around 1.2 million) children in the UK have complex or persistent speech, language and communication needs (SLCN).

There is a simple lack of awareness, understanding and support on the ground for children who struggle to communicate. Often help comes too late, when they have already missed out on the development opportunities enjoyed by their peers. These children need an integrated approach which brings together specialist speech and language therapy and teaching under one roof. This integrated model is the exception rather than the norm in mainstream education and this is where I CAN plays such a vital role.

I CAN is the children's communication charity. It works to develop speech, language and communication skills for all children, with a particular focus on children who find communication hard.

I CAN works directly with children with SLCN throughout the UK via our two schools for children with a severe and complex SLCN. This expertise is utilised to develop information

packages, training, programmes, research materials and campaigns designed to develop the communication skills of all children.

## Relevant services

I CAN owns and runs two schools, Dawn House School and Meath School, that provide a balance of support and challenge for pupils aged between 4 – 19 who have a severe and complex SLCN, allowing full access to the curriculum. Dawn House School has twice been included on the Ofsted excellent schools list and was awarded Specialist Schools status and specialises in the 'communication and interaction' part of the SEN Code of Practise.

Talking Point is the first stop for information on children's speech, language and communication for parents, families and professionals.

[www.talkingpoint.org.uk](http://www.talkingpoint.org.uk)



helps children  
communicate

REGISTERED CHARITY 210031

**For more information on I CAN,  
please contact:**

**I CAN, 8 Wakley St, London EC1V 7QE**

**Tel: 0845 225 4071 Fax: 0845 225 4072**

**Email: [info@ican.org.uk](mailto:info@ican.org.uk)**

**Website: [www.ican.org.uk](http://www.ican.org.uk) or**

**[www.talkingpoint.org.uk](http://www.talkingpoint.org.uk)**

# Improve reading & listening comprehension

## COMPREHENSION BOOSTER

Formerly Reading Booster

Key stage 2 & 3

Enjoyable format requiring minimal supervision

Also improves:

- inferential thinking
- vocabulary
- reading speed
- verbal memory



FREE DEMO CD

[www.lucid-research.com](http://www.lucid-research.com)

Tel: 01482 882121

Email: [info@lucid-research.com](mailto:info@lucid-research.com)

**The following chapter contains a list of schools and centres throughout the UK dedicated to those pupils with special needs.**

### **A parent's 10-point checklist for choosing a special school.**

- ✎ Does it cater for pupils with the same sort of learning difficulty as my child?
- ✎ Will it provide the full range of teaching and care set out in my child's statement?
- ✎ What are the transport arrangements for getting my child to school and home?
- ✎ Are any boarding facilities available for my child to live and sleep in?
- ✎ How does the school keep parents informed about the progress the children are making at school?
- ✎ Do the staff have the correct qualifications? Are they enthusiastic enough?
- ✎ What is the school's attitude towards reintegrating pupils with SEN into mainstream schools?
- ✎ Does the environment, including the classrooms and non-teaching areas, seem like one in which I want my child to spend the day?
- ✎ Are any formal links which it has with mainstream schools, including integrated lessons, likely to benefit my child?
- ✎ What are the school's overall aims and philosophy?

## Appleford School

Shrewton, Salisbury, Wiltshire SP3 4HL Tel: 01980 621 020

Fax: 01980 621 366 Email: [secretary@appleford.wilts.sch.uk](mailto:secretary@appleford.wilts.sch.uk)

Website: [www.appleford.wilts.sch.uk](http://www.appleford.wilts.sch.uk)

**Established:** 1988

**Head Teacher:** Ms S. M. Wilson

**Status:** DfE Approved, CRStED Sp

**School, IAPS, Organisational Member of BDA**

**Age Range:** 7-13

**Number on Roll:** 87

**Type of School:** Mixed

**Full, flexible, weekly, boarding and day**

**Teaching Staff:** 14

**Residential Care Staff:** 3

**Learning Support Staff:** 6

**Length of School Year:** 36 weeks

**Fees: Boarding from £6,927 per term**

**Day from £4,727 per term**

### Special needs catered for

Specific Learning Difficulties – Dyslexia, Dyspraxia, ADD and associated speech and language disorders.

### Aims and philosophy

Appleford is a 24-hour school. It applies a whole school approach to Specific Learning Difficulties which is designed to boost pupil self-confidence and give them the support where and when they need it. Specific aims are to restore pupil self-confidence, develop self-respect and self-reliance and to cultivate courtesy and consideration for others.

### General environment

The school is situated in a substantial country house built 130 years ago, with new classrooms, sports hall and boarding accommodation and stands in eight acres of parkland. A new ICT teaching suite, Science Lab and Girls' wing were added in 2001. There are also adventure playgrounds, swings and tennis courts.

### Specialist facilities

A small, highly structured boarding and day school that provides a family-type atmosphere within a secure and caring environment. The main emphasis is on literacy and numeracy skills. Each pupil follows an individual multi-sensory programme using proven methods. Teaching is in small groups. All pupils have access to the National Curriculum according to their needs.

### Support services provided

Occupational therapy, Speech and Language therapy, counselling and psychological support.

### Home school links

There is a flourishing Friends of Appleford organisation, which has charitable status. Staff are available to see parents, if they so wish. The school encourages parents to make positive relationships and to support the school in all aspects of school life.

### Staff qualification and selection

The school follows the guidelines for selection and screening of staff as laid down by the NCS and CRB. The staff have a wealth of experience. All English staff have additional qualifications for teaching children with SpLD.

# Breckenborough School

**B**

Thirsk, North Yorkshire Y07 4EN  
Telephone: 01845 587238 Fax: 01845 587385  
Email: [office@breckenbrough.org.uk](mailto:office@breckenbrough.org.uk)

**Established:** 1935

**Head Teacher:** Geoff Brookes

**Status:** Independent Non-maintained

**DfE Reg No:** 815/7002

**Age Range:** 9-17

**Number on Roll:** 38

**Type of School:** Boys – Full/flexible/weekly boarding and day

**Teaching Staff:** 12

**Residential Care Staff:** 9

**Special Needs Support Staff:** 3

**Length of School Year:** 38 weeks

**Fees:** On application

## Special needs catered for

EBD – all boys of above average intelligence.

## Specialist facilities

Small classes – no more than five boys in each. Wide range of GCSE examinations.

## Home school links

Individual key workers and mentor provide contact. Annual reviews of progress and termly school reports.

## General environment

Set in beautiful North Yorkshire countryside four miles from Thirsk. Close to moors and dales and only 40 miles from the sea. We make full use of these areas in our work. The main building is Victorian but built in Jacobean-style.

## Aims and philosophy

To further the socialisation of each individual so that he can develop self-confidence, self-discipline and self-respect from which basis he can develop his sense of social responsibility and his respect for others. To develop a relaxed atmosphere which emphasises care, control, security and responsibility. To encourage each child to face up to his role in society and to recognise the importance of interpersonal relationships and social responsibility. To emphasise the importance of education both as a narrow academic experience and in its wider context. To encourage our children to genuinely believe that they can be acceptable members of society and that this can be achieved through the pursuit of attainable goals, whether they be social, spiritual, behavioural or academic. To encourage an active partnership between the child, his school, his family and the referring agencies. To recognise each individual's need for space for personal development and his right to privacy to allow for the development of individual freedoms within an agreed moral code and legal framework. To offer as wide a life experience as possible. To develop individual talents and abilities as fully as possible. To seek the gradual de-institutionalisation of each individual child. To help each child lead a happy life.

## Staff qualification and selection

All teachers are qualified in their specialist subjects. Care staff are selected on personal qualities as much as experience. All hold NVQIII care qualifications. All staff undergo rigorous checks before final appointment. Staff support and appraisal is an integral part of our philosophy. The school holds regular in-service training for all staff in many aspects of work in special education.

Confused about where  
to find an easy to use  
reference guide to  
special schools?

Want to search for  
schools in your area  
and keep up with the  
latest news and  
events?



Then join hundreds that  
already visit  
the number one  
reference source  
for parents and  
professionals and find  
what you are looking  
for today...

**[www.specialneedsuk.org](http://www.specialneedsuk.org)**

**The UK's first dedicated website for special needs**

## Cedar House School – Part of the Witherslack Group

**C**

**Kendal Road, Kirkby Lonsdale, Via Carnforth, Lancashire  
LA6 2HW Tel: 01524 271181 Fax: 01524 271910**

**Email: schooloffice@cedarhouseadmin.co.uk Web: www.cedarhouseschool.co.uk**

**Head Teacher: Mrs G Ridgway**

**Age Range: 7-16**

**Status: Independent**

**Type of School: Co-educational Day  
and Boarding**

**Fees: Based on meeting individual needs**

**Number of Places: 74**

**Weekly boarding-58; Day-16;**

**Prep-20; Senior-54; Girls-24; Boys-50**

### Special needs catered for

Behavioural, emotional and social difficulties with associated learning difficulties. ADD, ADHD, ASD, ASP, BESD, CB, DYC, DYP, DYS, EPI, HEA, MLD, SP&LD, TOU.

### Specialist facilities

We have excellent amenities, including a separate primary teaching base with well-equipped specialist facilities for science, information technology, art and craft.

### Support services provided

Each class group has a class tutor who is available to discuss individual education related issues. Class tutors also give feedback to pupils about their behaviour and their grades each week. All pupils have a Keyworker, and the opportunity for regular timetabled one-to-one sessions when individual concerns and difficulties can be discussed and personal success can be celebrated. The school has a permanent Educational Psychologist who provides support and advice to pupils and staff regarding a wide range of issues including behaviour management, classroom organisation and specific requirements for individual pupils. There is access to a Speech and Language Therapist and a School Mental Health Worker, who is linked to the Morecambe Bay Primary Health Care Trust CAMHS Service, and a psychotherapist who works with individual pupils on a weekly basis. The school has excellent links with psychiatrists having clinical responsibility for pupils who receive medication.

### Home school links

Parents are welcome and are encouraged to attend school events. Home visits by the Pastoral Care Manager and other contacts are arranged to help develop a mutually supportive link.

### General environment

Cedar House was originally a small mansion house to which has been added purpose-built dining, assembly, teaching and residential units. The school is situated close to the centre of Kirkby Lonsdale, an old market town within easy reach of the Yorkshire Dales and the Lake District.

### Aims and philosophy

Cedar House School is committed to providing quality care and education, creating an environment to foster resilience, ensure success and provide opportunities for achievement, enabling every child over time to reach their potential as responsible citizens. The social and educational curriculum has been adapted to interest pupils, capture their imagination and enable them to reinforce their learning in realistic settings. A focus on active learning along with the excellent use of local community facilities brings the curriculum to life. The School provides access to the National Curriculum and a range of external exams are offered at GCSE and entry level. Cedar House School is rated as an outstanding provider by Ofsted.

### Staff qualification and selection

All staff are recruited through a high quality selection procedure and their suitability checked through the Criminal Records Bureau at Enhanced Level.

## Centre Academy East Anglia

Church Road, Brettenham, Ipswich, Suffolk IP7 7QR

Tel: 01449 736404 Fax: 01449 737881

Email: [admin@centreacademy.net](mailto:admin@centreacademy.net)

**Established:** 2010

**Principal:** Dr Duncan Rollo

**Status:** Independent Special School

**Type of School:** Mixed, day and boarding

**DfE Reg No:** 213/6334N

**Age Range:** 8-16

**Number on Roll:** 35

**Teaching Staff:** 10

**Length of School Year:** 36 weeks

### Special needs catered for

We teach the skills and coping strategies that enable students with dyslexia, ADD/ADHD, Asperger's and other learning challenges to succeed. Our class sizes are very small (usual 4-5 students) and we feature a significant amount of one-to-one instruction.

### Specialist facilities

All students are comprehensively tested and evaluated to determine academic strengths and challenges; we then design a program of instruction tailored to meet the student's individual needs.

### Programs

We follow the National Curriculum from KS2 through GCSE. In 2012, we will begin offering the American High School Diploma, currently offered by our sister school, Centre Academy London. The Diploma, which features continual assessment and is therefore not examination-based, will gain our graduates admission to British and American universities.

### Boarding

We offer 5-day boarding on an elegant 10-acre campus that features superb classroom buildings and excellent residential facilities for both boys and girls. Extensive playing fields provide the ideal setting for a variety of sports, and we have additional facilities for Art, Drama and related creative endeavours.

### Support services provided

We have a head of residence and an entire care staff to support our boarding and day pupils; we also have counselling, school and university placement and related services including speech & language and occupational therapy.

### Home school links

We believe that for learning to flourish there must be a partnership between the school, the student and the family. Parents are frequently counselled on the learning challenges faced by the individual students and discussions with the Head of School are encouraged. Written reports are provided for each of the three terms and we also have parent-teacher conferences scheduled regularly throughout the academic year.

### General environment

CA East Anglia is located at the edge of a small, rural village 20 minutes from Bury St Edmunds and 30 minutes from Cambridge by car, and one hour from London by train. The architecture is Georgian; there is an extensive computer laboratory and other well-equipped classrooms featuring smart boards and other technology.

### Aims and philosophy

CA East Anglia is committed to providing excellence in education in a supportive, nurturing and safe environment so that each student may achieve his/her full academic potential. We instill within our students an appreciation of those values we believe essential for education to flourish – honesty, trust, respect, compassion and civility.

### Staff qualification and selection

All staff are qualified and/or experienced in special education.

92 St John's Hill, Battersea, London SW11 1SH

Tel: 0207 7382344 Fax: 0207 7389862

Email: [ukadmin@centreacademy.com](mailto:ukadmin@centreacademy.com)

**Established:** 1974

**Principal:** Dr Duncan Rollo

**Status:** Independent Special School

**Type of School:** Mixed – Day

**Age Range:** 8-19

**Number on Roll:** 60

**Teaching Staff:** 19

**Length of School Year:** 38 weeks

**DfE Reg No:** 213/6334N

## Special needs catered for

We teach the skills and coping strategies that enable students with dyslexia, ADD/ADHD, dyspraxia and other learning difficulties to succeed. Our class sizes are very small (usually 6-8 students), and we feature a significant amount of one-to-one instruction.

## Specialist facilities

All students take part in a comprehensive testing and evaluation programme to determine academic strengths and difficulties; we then design a programme of instruction tailored to meet the student's individual needs.

## Programs

After a period of time, some students will return to mainstream education. Some may elect to continue at Centre Academy and work within the British National Curriculum, whilst others may complete the American High School Diploma, a qualification that will gain them entry into both British and American universities. We have a 100% success rate in university placements and a new vocational programme has now been introduced.

## Support services provided

Counselling is an integral part of the Centre Academy program. We also offer university and sixth form placement as well as career counselling and speech & language and occupational therapy.

## Home school links

We believe that for learning to flourish there must be a partnership between the school, the student and the family. Parents are counselled on the learning challenges faced by the individual students and twice-yearly parent-teacher conferences are held. Progress and grade reports are forwarded to the families five-times per year. We also have a parent-teacher organisation and a variety of social and academic gatherings that take place throughout the school year.

## General environment

Centre Academy is a short walk from Clapham Junction Railway station and is served by a variety of public transportation. The main building is late Edwardian and is Grade II listed. There is an extensive computer laboratory and other well-equipped classrooms.

## Aims and philosophy

Centre Academy is committed to providing excellence in education in a supportive, nurturing environment so that each student may achieve his/her full academic potential within either the British National Curriculum or the American Curriculum. We instill within our students an appreciation of those values we believe essential for education – honesty, trust, respect, compassion – and we also promote international understanding within our culturally diverse student population.

## Staff qualification and selection

All staff are qualified and/or experienced in special education and all are specialists in their specific content/subject areas.

## Chailey Heritage School

Haywards Heath Road, North Chailey, Lewes, East Sussex  
 BN8 4EF Telephone: 01825 724444 Fax: 01825 723773  
 Website: [www.chs.org.uk](http://www.chs.org.uk)

**Established: 1903**

**Status: Non-maintained special school  
 and Registered Children's Home**

**Age Range: 3-19**

**Number on Roll: 71 (as of 1.9.09)**

**Type of School: Mixed – day, weekly  
 and fortnightly boarding**

**Principal: Sylvia Lamb**

**Head Teacher: Simon Yates**

**Head of Care: Sheila Perou**

**Teaching Staff: 20**

**Special Needs Support Staff: 59**

**Length of School Year: 38 weeks**

**52 weeks care available**

**Fees: Please contact the school office**

### Special needs catered for

Complex physical, medical and learning disabilities. Speech and language impairment with associated visual and hearing impairment, including dual sensory impairments. Epilepsy.

### Specialist facilities

Spacious, well-equipped classrooms. High staff/pupil ratio in small teaching groups. Six purpose-built residential bungalows offering flexible care packages of up to 52 weeks. New multisensory suite and two dark rooms. Assistive mobility system for powered wheelchair users. Hydrotherapy pool and all-weather riding arena with therapeutic horse riding physiotherapist. Alternative and augmentative communication systems (AAC) including voice output communication aids (VOCAs), the Chailey Communication System (CCS) devised by the school specifically for the school's pupils and Signalong signing. Postural support equipment adapted for each pupil as appropriate. Pre-school assessment unit (3-5 years) and Primary Department (up to 11); Secondary Department (11-16 years); 16+ Department for students up to 19 years old and a 19+ Department is beginning to take shape.

### Support services provided

Chailey Heritage School shares its location with Chailey Heritage Clinical Services (CHCS) – a specialist NHS clinical team and part of the South Downs Health NHS Trust. Pupils' clinical needs are overseen by specialists in paediatric conditions, neurological problems and long-term disabilities. Therapists from CHCS make up part of the multidisciplinary team. The team includes expert teachers, paediatric medical consultants, speech and language therapists, physiotherapists, occupational therapists, nurses and rehabilitation engineers. Some of the other specialist services on site include audiology, ophthalmology and orthotics departments and a specialist dietician. Specialist engineering and technology support. Specialist staff training programme. Dual school placement programmes with mainstream schools where appropriate.

### Home school links

Excellent staff/parent liaison. Communication and involvement in all aspects of planning and reviews. Home school diaries. Parents' evenings. Parent Governor. Informative website.

### Aims and philosophy

*CHS aims to:*

Meet the wide range of complex special needs presented by the pupils. To be innovative in the development of pupils' communication and mobility. To address Every Child Matters philosophy. To encourage pupils' personal autonomy to the fullest extent. To provide a stimulating and enjoyable learning environment. To provide the National Curriculum suitably modified for each pupil to take account of their individual needs, with externally accredited courses being accessed as appropriate.

*Ofsted 'Outstanding' – September 2009.*



## Chelfham Mill School

**C**

Barnstaple, North Devon EX32 7LA  
Tel: 01271 850448 Fax: 01271 850235

Email: [enquiries@chelfhammillschool.co.uk](mailto:enquiries@chelfhammillschool.co.uk) Website: [www.chelfhammillschool.com](http://www.chelfhammillschool.com)

**Established: 1967**

**Principal: Mrs Katy Roberts B.Ed,  
B.Phil (E.B.D), R.M.A.**

**Status: Independent**

**DfE Reg No: 991/6079**

**Age Range: 7-16**

**Number on Roll: 31 boarding/10 day**

**Type of School: Boys – Full/flexible  
boarding and day**

**Teaching Staff: 8**

**Residential Care Staff: 31**

**Special Needs Support Staff: 16**

**Length of School Year: 52/38 weeks**

### Special needs catered for

The school considers all types of emotional and behavioural problems as well as other complicating factors, e.g. epilepsy, visual impairment, learning difficulties. There is particular expertise in helping children who exhibit Asperger's, Tourette's syndrome, ADHD and children who have been sexually abused.

### Specialist facilities

The home is divided into two main living groups: The Mill House is adapted for the younger pupils with primarily single room accommodation. River View is a large, spacious single room accommodation, specifically designed to meet the needs of the older pupils. Education is important at Chelfham. Classes are small with 1-1 support where necessary. The school curriculum is designed to cover 24 hours and is flexible in its approach catering for an academic and vocational pathway including differentiated access to the National Curriculum.

### Support services provided

The Principal is qualified in education and CBT. The founder/director is an educational psychologist and CB therapist. Another part time CB therapist is employed with a full time art/play therapist. CB therapeutic drama and nature quest therapy are special to the school, as is the unique anger management programme. Bibliotherapy and Brain Gym are also used. A child psychiatrist is available for consultation.

### Home school links

All staff are encouraged to visit parents and specialist staff set up behaviour change programmes in the home. Parents are encouraged to come to the school at any time but in particular for school events e.g. sports day, concerts.

### General environment

Chelfham is situated four miles from the regional market town of Barnstaple in picturesque North Devon, close to Exmoor and to the many wonderful beaches in the area. There are two villages nearby. There is a trout stream in the grounds providing for fishing, boating and water play. The grounds extend to nearly 30 acres of garden, woods and fields. Classrooms are all separate from the main house. There is an administration centre, library, theatre, information communication technology centre, play therapy, food technology, science rooms together with a recording studio.

### Aims and philosophy

The aim of the school is to provide a secure, homely and understanding environment in which each pupil can realise his full capabilities and adjust successfully to life's demands. Good practice has been established in using behavioural approaches showing how management and change can take place in a warm, positive manner which can be enjoyable to staff and pupils. The use of praise, individual programmes, token economies, contracts and techniques of cognitive behaviour therapy are used to stimulate motivation for change. This, combined with social skill training and the promotion of self-esteem, develops a confident, skilled child. Moral, emotional and spiritual development is seen as very important and many cultural events and anniversaries are celebrated throughout the year.

### Staff qualification and selection

Staff are recruited locally and nationally. All teachers are qualified, most being graduates and attend many outside courses. All staff receive ongoing in-service training.

## Chelfham Senior School – Priory Education Services

Bere Alston, Yelverton, West Devon PL20 7EX

Tel: 01822 840379 Email: [chelfhamseniorschool@priorygroup.com](mailto:chelfhamseniorschool@priorygroup.com)

Website: [www.priorygroup.com/education](http://www.priorygroup.com/education)

**Principal:** Mr John Steward

**Age Range:** 11-19

**Status:** Independent Special School

**Type of School:** Boys and girls,  
residential and day

**Length of School Year:** 38-52 weeks

**Fees:** Available on request

**Number of Places:** 63

### Special needs catered for

Specialist education and residential care for boys and girls aged 11-19 (post 19 for day boys) who have autism with emotional and behavioural difficulties and complex learning difficulties. Many have experienced failure, disappointment and criticism with resulting feelings of inadequacy and poor self-image. Many also have additional conditions including Asperger's Syndrome.

### Specialist facilities

Chelfham Senior School provides a positive and structured environment which celebrates and rewards success and progress, and a culture in which students feel safe, secure and listened to. A framework where pupils learn to take responsibility for the control of their own behaviours is used.

### Support services provided

Each young person has an individual education plan and an individual behaviour management plan which break down the objectives of their needs into small steps so that progress can be monitored and assessed. Year 11 pupils may move to the Post-16 facility, which is on a separate site, where they can focus on vocational awareness courses and independence skills training. Students at both sites have access to local colleges and schools enabling them to take advantage of an even wider variety of academic and social communication provision.

### General environment

Chelfham Senior School is located on two sites in the heart of the Devon countryside, close to Dartmoor National Park and the many wonderful beaches of North Cornwall. The nearby towns of Tavistock and Plymouth offer shops and leisure facilities and a direct rail link to London.

### Education

A broad, balanced and differentiated curriculum is on offer, including the National Curriculum where appropriate. Students follow courses based on a modular structure, as this is better suited to the learning style of many of our students. Students can sit Certificates of Educational Achievement and GCSEs.

### Aims and philosophy

Our aim is to give young people with challenging behaviour a better chance in life by helping them to reappraise themselves and develop feelings of self-worth. By redressing the negative effects of past experiences and focusing on the individual and their future, we help them produce positive changes to achieve this.

## Chilworth House School – Part of the Witherslack Group

Thame Road, Wheatley, Oxfordshire OX33 1JP  
Tel: 01844 339077 Fax: 01844 339088

Email: [admin@chilworthhouseschool.com](mailto:admin@chilworthhouseschool.com) Website: [www.chilworthhouseschool.com](http://www.chilworthhouseschool.com)

**Principal:** Bob Marchbank

**Head Teachers:** Sophie Garner BEd, MEd  
(Oxon), NPQH and Kevin Larsen BEd  
(Sp. Ed) MA (Sp. Ed)

**Age Range:** 5-18

**Status:** Independent Special School

**Type of School:** Co-educational Day School

**Fees:** Available upon request

**Number of Places:** 56

### Special needs catered for

Pupils will primarily have needs associated with complex educational needs, communication difficulties and challenging behaviours.

### Specialist facilities

Chilworth House and Chilworth House Upper Schools consist of 2 adjacent properties: our primary provision and our secondary provision. The two buildings comprise a high quality provision with large grounds which enhance our educational opportunities. We are well resourced and modern technology is used to enhance the pupils' education. We are a Forest Schools site.

### Support services provided

We receive regular input from visiting Speech and Language and Occupational Therapists and an Educational Psychologist.

### Home school links

Parents are welcome and are encouraged to attend school events. Home visits and other contact are arranged to help develop a mutually supportive link.

### General environment

The school benefits from 7 acres of grounds, situated in a rural environment near Oxford, which enhances our educational opportunities.

### Aims and philosophy

We are committed to providing a happy, welcoming and motivating learning environment where the whole school enjoy their learning experiences and are encouraged to achieve their potential. As a school we have put in place a curriculum model which offers pupils' a broad, balanced, relevant and differentiated curriculum that has 'values education' and the development of social and emotional skills at its core. Our curriculum aims to be relevant, improve self-esteem, motivation and achievement, develop skills for adult life and engage pupils in their learning. This is achieved through cross-curricular learning which helps pupils to make links across the subjects. Regular offsite visits support the curriculum model. At Chilworth House School we place a strong emphasis on establishing stable and trusting relationships between pupils and staff, offering support to both pupils and parents at school and at home.

### Staff qualification and selection

All staff are recruited through a high quality selection procedure and their suitability is checked through the Criminal Records Bureau at Enhanced Level.

## Cotswold Chine School

Box, Nr. Stroud, Gloucestershire GL6 9AG

Main telephone: 01453 837550 Fax: 01453 837555

**Established:** 1954

**Head Teacher:** Maureen Smith

**Status:** DfE approved independent,  
co-educational boarding

**DfE Registration No:** 916/6040

**Age Range:** 9-19

**Number on Roll:** 37 (11 girls/26 boys)

**Teaching Staff:** 15 teachers

**Type of School:** Mixed – full boarding

**Care Staff:** 60

**Length of School Year:** 39-52 weeks

**Fees:** Based upon individual pupil need

**Admissions:** Rebecca Benson

### Special needs catered for

Cotswold Chine School is an independent day and residential therapeutic special school (DfE Registered). The School offers outstanding education and care for vulnerable students with a range of complex learning needs. These include, but are not limited to, moderate to severe learning disabilities, autistic spectrum including Asperger's syndrome, ADHD, epilepsy, attachment disorders, communication needs and associated challenging behavioural, emotional and social difficulties. Many of the young people at the school have experienced difficulties in previous educational settings, but once settled they generally find that the School's holistic approach to education and care provides them with an environment in which they can make progress and achieve both socially and academically. Registration is for co-educational provision for students aged nine to nineteen years. Students board from 39 to 52 weeks a year; a small number of day places are available. The school has eight housegroups, including several semi-independent living units. *'Cotswold Chine School provides an outstanding quality of Education that fully meets its aims, maintaining its high standards from the previous inspection. Students make outstanding progress because the quality of the curriculum, teaching and assessment is outstanding'* (Ofsted 2010).

### Specialist facilities

The School offers full access to the National Curriculum and students leave school with a wide range of externally accredited qualifications including Unit Awards, Entry Level Certificates, Duke of Edinburgh, ASDAN, COPE, Work Related Learning and GCSEs, with some students gaining Grade C and above. Additionally, students have access to an extensive craft and vocational curriculum which enables them to develop a wide range of practical and artistic skills. The School's recent Ofsted report (2010) highlighted the *'many curriculum pathways open to KS 4 and post 16 students'* and the *'lively pace and frequent changes of activity so that students attend well and remain absorbed'* as being particularly outstanding features of the School's educational provision. Education is delivered through a multi-disciplinary approach, with all staff working together to ensure each student achieves their potential.

### General environment

Educational accommodation includes seven well-resourced classrooms with excellent ICT facilities, a design/technology/art room, food technology room, music room (with recording facilities), library and school hall. The School is currently developing specialist science facilities. There are extensive grounds, access to the nearby common as well as to an area of woodland, which provides an excellent resource for outdoor education in a range of subject areas. Teaching staff are well qualified and able to provide additional communication aids/strategies such as visual aids and a structured approach to teaching, where appropriate. Within the residential accommodation *'Young people benefit from enthusiastic staff who feel supported in their professional development through excellent training opportunities. Young people enjoy the activities available and the individual support to meet their social and academic targets and to develop their life skills'* (Ofsted 2010).

### Support services provided

Our comprehensive facilities also include therapy and psychology support from a range of in-house professionals, speech and language assessment, high staff to student ratio and health promotion/support via a dedicated school nurse. Cotswold Chine is administered by Novalis Trust, a charitable organisation based on the principles of care and education of Rudolf Steiner.

**Clay Hill, Lyndhurst, Hampshire SO43 7DE**  
**Tel: 02380 283633 Email: [coxleaschool@priorygroup.com](mailto:coxleaschool@priorygroup.com)**  
**Website: [www.priorygroup.com/education](http://www.priorygroup.com/education)**

**Principal: Mr Mark McQuillan**

**Age Range: 9-18**

**Status: Boys and girls, residential and day**

**Length of School Year: 38-52 weeks**

**Fees: Available on request**

**Number of Places: 55**

## Special needs catered for

Coxlease School is a specialist residential school for boys and girls with severe behavioural, emotional and social difficulties. Typically, young people's behaviour will be challenging, some will have associated intellectual difficulties and many pupils will have encountered negative educational experiences and disruption and consequently lack confidence in their own abilities.

## Specialist facilities

A stable and caring environment combined with high staff-to-pupil ratios ensures that every young person at Coxlease School has the opportunity to develop their ability, share new experiences and reach their full potential.

## General environment

The school is set in ten acres of grounds and woodland which provides students with space and a safe environment in which to learn, have fun and grow. A new sports hall and outdoor facilities allow for football, basketball, swimming pool, BMX and motorcycle tracks together with an adventure area.

## Small group living

Residential accommodation is split into small homely bases both on and off site. All students have single bedrooms, some with en-suite facilities, and are well furnished with a comfortable sleeping area and a work/play area.

## Education

All students are expected to attend education and to wear school uniform. We provide the full National Curriculum which is broad, balanced and modified to meet each pupil's needs according to their individual education plan (IEP). Classes are for a maximum of six pupils with a minimum of two staff to a group to allow for intensive and personalised teaching. The teaching staff aim to create a motivating environment that encourages students to learn.

## Therapy

The therapy department supports the school's 24-hour curriculum by practicing an interdisciplinary approach to its work with students and their families. All therapy sessions are on site and include psychotherapy, family work and counselling.

## Aims and philosophy

Through an integrated approach to education, care and therapy we aim to give young people with severe and challenging behavioural issues the opportunity to make positive changes in their lives and to achieve their full potential. By doing so they have a greater chance of integrating into the wider community and becoming valued and valuable adults in society.

## Coxlease Abbeymead

Palace Lane, Beaulieu, Hampshire SO42 7YG

Tel: 02380 282 515 Email: [coxleaseabbeymead@priorygroup.com](mailto:coxleaseabbeymead@priorygroup.com)

Website: [www.priorygroup.com/education](http://www.priorygroup.com/education)

**Unit Manager:** Martin Rose

**Status:** Emergency Placement Unit

**Age Range:** 9-16

**Number of Places:** 5

**Placement Type:** Up to 12 week assessments

**Gender:** Mixed

**Fees:** Available on request

### Special needs catered for

Coxlease Abbeymead in Beaulieu, Hampshire provides a specialist emergency placement and assessment unit for young people aged 9 to 16 with severe behavioural, emotional and social difficulties. The facility offers provision for up to five young people who require emergency placements, together with an assessment unit for young people who require a full detailed assessment in order to secure a long-term placement to accommodate their current and future needs.

### Emergency placements

An emergency respite facility to respond to 24 hour referrals and meet the immediate needs of young people in crisis.

### Assessments

Our assessment unit provides full, independent, detailed assessments for young people in order to gain long-term security for them in a successful placement. Residential assessment placements are for up to a maximum of three months, depending on individual need.

### Our aim

Our aim is to create a constructive and positive experience in a small homely environment in order to fully assess our young people's complex and individual needs and facilitate successful long-term placements in appropriate settings.

### Tailored programmes

All young people are provided with individually tailored programmes of education, care and therapy in a therapeutic and natural environment in the heart of a local community. Close collaborative working across education, care, therapy and healthcare is fundamental to our approach and young people have access to a range of specialist therapies, depending on their individual need.

### Outcomes

The desired outcome is for all young people who are experiencing crisis, trauma or disruption when they first come to Coxlease Abbeymead to move on to long-term and successful placements which fulfil their current and future needs.

Through providing a full and detailed assessment package, Coxlease Abbeymead aims to determine each individual's needs to give them the opportunity to find placement stability and make positive changes in their lives as they reach adulthood.

We are confident that in successfully seizing these opportunities through a unique and bespoke facility, our young people will find a placement tailored to their needs and progress in the wider community as valued and valuable adults.

## Cruckton Hall School – Part of Kisimul School

**C**

Cruckton, Shrewsbury, Shropshire SY5 8PR

Telephone: 01743 860206 Fax: 01743 860941

Email: [pdm@cruckton.com](mailto:pdm@cruckton.com) Website: [www.cruckton.com](http://www.cruckton.com)

**Founded: 1981**

**Head Teacher: Paul Mayhew**

**Status: DfE approved**

**DfE Approved No: 893/6017**

**Age Range: 8-19**

**Number on Roll: 80**

**Type of School: Boys – Full and flexible boarding**

**Teaching Staff: 23**

**Residential Staff: 87**

**Teaching Assistants: 17**

**Length of School Year: 52 weeks**

**Fees: On application**

### Special needs catered for

Cruckton Hall School, part of the Kisimul group of schools, offers an integrated residential education for boys aged 8-19 years of age who have been diagnosed with Autism Spectrum Disorders.

### Specialist facilities

For those pupils who are resident at Cruckton Hall, the school provides a 24 hour educational programme. All boys at the school have an Individual Education Plan (IEP), a Placement and Care Plan, Health Plan and from Year 9 a Transition Plan. The respective parts of these plans are discussed between professionals at the school, the boy and his parents/carers. The school has a full range of specialist rooms to support all National Curriculum subjects. All pupils are prepared for GCSE examinations in English, Maths and Science. They can also choose to study for GCSEs in History, Geography, French, German, Computer Studies, Art, Home Economics and Design Technology. In addition, the school also offers ECDL, AQA Skills for Life Awards and a variety of Entry Level Certificates. Entry to Cruckton Hall School is by interview and assessment. A Multi-Disciplinary Team of professionals carry out a baseline assessment for each student within the first six weeks of admission.

### General environment

Cruckton Hall is a listed building surrounded by ten acres of gardens that include woods, playing fields and play areas. The site is located within a friendly rural community, in beautiful countryside, four miles from the town of Shrewsbury. The Welsh Marches provide a stunning backdrop and a rich source of options for regular trips and adventures. Activities enjoyed include skateboarding, swimming, football, cricket, and in the summer the Adventure Camp encourages team work amongst student groups through activities such as orienteering, mountain biking, rock climbing and raft building. Links with local clubs and societies include the local stables, Army Cadet Force, Jiu Jitsu and Laser Quest to name a few.

### Home school links

Cruckton Hall encourages parents to maintain contact with their child by visits, telephone or post, and welcomes visits to the school. Parents are encouraged to attend reviews concerning their child and are invited to take an active part in fund raising events for the school. Newsletters are sent out termly.

### Aims and philosophy

Cruckton Hall aims to provide a warm, structured, caring learning environment in which each pupil feels safe and secure, can succeed, is treated as an individual and is able to develop skills and talents in order that he leaves school as an active participant in, and a positive contributor to, society. The strengths of Cruckton Hall School lie in its consistent record of success, in both academic and social spheres, the quality and experience of the staff team and the positive measurable outcomes for all the students.

## Cumberland School – Part of the Witherslack Group

Church Road, Bamber Bridge, Preston, Lancashire PR5 6AJ

Tel: 01772 284435 Fax: 01772 338136

e-mail: office@cumberlandschool.co.uk Website: www.cumberlandschool.co.uk

**Head Teacher: Mr D. S. Barden**

**Age Range: 11-16**

**Status: Independent**

**DfE Approved No: 888/6104**

**Type of School: Co-educational**

**Day School**

**Number of Places: 48**

**Fees: Available upon request**

### Special needs catered for

Behavioural, Emotional and Social Difficulties, and with associated learning difficulties. BESD, ADHD, ODD, Asperger's Syndrome, moderate communication difficulties.

### Specialist facilities

All pupils are taught in small class groups, which together with a high staff:pupil ratio, ensures their educational progress and personal development. There is continual use of information and communication technology across the curriculum, with the latest specification computers and interactive whiteboards in many of the classrooms. The pupils' use of ICT is encouraged in all aspects of school life, and the excellent modern facilities for Design Technology, Food Technology, Art, and Science are amongst the best in secondary schools of this type. Students have access to a wide range of college courses, outdoor education and Duke of Edinburgh Awards activities.

### Support services provided

Through the BEST curriculum our young people receive regular one-to-one support from experienced pastoral staff. Pupils with specific difficulties and those with delayed literacy and numeracy benefit from individual tuition and support. As a staff team with a wealth of experience and qualifications and the input from our own educational psychologist, councillor, speech and language and occupational therapist, we are able to provide comprehensive individual programmes which run alongside class teaching to help our pupils.

### Home school links

The Pastoral Care system is a major strength of the school. A team of four highly experienced staff support the pupils both inside and outside the classroom, and close liaison between school and the pupils' homes is a central feature of the care and welfare provided by the school.

### General environment

The school is ideally located in Bamber Bridge, at the junctions of the M6, M61 and the M65. The main part of the school is a Grade II listed building, whilst the new classroom areas are modern, bright, air-conditioned and well-equipped. Opened in April 2008, Cumberland School along with Westmorland School (Chorley) offer continuous education for pupils aged 5 through to 16, including children and young people who are residents within Witherslack Children's Homes.

### Aims and philosophy

The school prides itself in providing the highest levels of education, care, supervision and support for its pupils, based on the theory of 'Resilience' and on the school's motto, which is simply: 'Respect'. At Cumberland School, we support children in their developmental and social progress, as well as their academic achievements. The key to a young person's success at school is enjoyment in their education. Cumberland School provides a happy and caring environment in which achievements are recognised and rewarded, and in which each student is encouraged to feel a positive sense of belonging. Students are constantly encouraged to meet and overcome challenges and to reach their maximum potential.

### Staff qualification and selection

All staff are recruited through a high quality selection procedure and their suitability is checked through the Criminal Records Bureau at Enhanced Level.

**Helmley Road, Rainworth, Mansfield, Nottinghamshire NG21 0DQ**  
**Tel: 01623 795361 Fax: 01623 491173**  
**Email: dawnhouse@ican.org.uk**

**Established: 1974**

**Status: A Specialist School for  
Communication and Interaction –  
Non-maintained**

**DfE Reg No: 891/7022**

**Number on Roll: 75**

**Type of School: Co-educational, boarding  
and day pupils**

**Teaching Staff: 15**

**Residential Care Staff: 17**

**Special Needs Support Staff: 23**

**Length of School Year: 39 weeks**

**Fees: Reviewed on a case-by-case basis**

## Special needs catered for

Dawn House School is a non-maintained special school in Nottinghamshire. It provides intensive and specialist support for children and young people aged 5-19 years who have severe speech, language and communication needs or Asperger's Syndrome.

## Specialist facilities

The school aims to support pupils' development in speech, language and communication, thinking and reasoning, self-confidence and independence. Education, therapy and care programmes are tailored to meet the needs of each pupil. Joint planning by our highly qualified and experienced staff ensures that the school provides a fully integrated language environment. It offers a broad and balanced curriculum leading to GCSE or entry level accreditation in a range of subjects at 16 and going on to higher levels of vocational and academic work in the FE department.

## Support services provided

Teaching and therapy are supported by up-to-date technology and Paget Gorman Signed Speech. Extended days and overnight stays are available to day pupils. The school can offer full or part time places and short term provision if appropriate. Independent assessments, outreach consultancy and training can also be provided

## Home school links

The school works in partnership with parents. They are involved in planning and reviewing their child's programme and in informal and social activities in the school.

## General environment

The school is set in a pleasant site on the edge of Sherwood Forest in Nottinghamshire. It is well equipped with specialist teaching facilities including a science lab, food technology room, technology workshop, ICT suite, sports hall and indoor teaching pool for swimming.

## Aims and philosophy

The pupils are encouraged to become as independent as possible, exercising choice and responsibility. Independent living skills are highly valued and are fostered through the curriculum and care programmes. Dawn House School is run by I CAN, the children's communication charity. (Registered Charity No: 210031).

## Ofsted says

*"This is a good school with many outstanding features. pupils' self confidence soars in the climate of praise and encouragement. Pupils throughout the school achieve well because of the good quality of teaching and learning. Dawn House is entirely committed to enabling any pupil to be a valued and fulfilled member of society."*

## Central office

**I CAN, 8 Wakley Street, London EC1V 7QE Tel: 0845 225 4071 Fax: 0845 225 4072**  
**Email: info@ican.org.uk Website: www.ican.org.uk or www.talkingpoint.org.uk**



# Derwent House School formerly Cumberland Upper School – Part of the Witherslack Group

**D**

4 East Park Road , Blackburn, Lancashire BB1 8AT Tel: 01254 691195  
Fax: 01254 698221 Email: [admin@derwenthouseschool.co.uk](mailto:admin@derwenthouseschool.co.uk)

**Head Teacher:** Miss J Rhodes

**Age Range:** 11-16

**Status:** Independent

**Type of School:** Co-educational Day School

**Number of Places:** 30

## Special needs catered for

Challenging Behaviour with Speech and Language Communication Impairment. Students may have additional needs associated with their social communication needs and may exhibit some traits which can be associated with Autistic Spectrum Disorder. Related needs may include Dyspraxia, Dyslexia, Attention Deficit Disorder, Attention Hyperactivity Disorder.

## Specialist facilities

The building has undergone extensive renovation to provide specialist facilities for English, Maths, ICT, Science, Art and Food Technology which enable effective learning. The physical Education programme of study makes use of specialist facilities offsite. Work Placements and Vocational Courses are in place for KS4 students.

## Support services provided

The school offers regular one-to-one support from Keyworkers and Speech and Language Therapists, as well as assessment and support from our Educational Psychologist. Our Counsellor works with individual students, using a person-centred approach which is non-judgemental and helps students develop their ability to form positive and trusting relationships and deal appropriately with their thoughts and feelings. Students are supported to find strategies to deal positively with the issues in their life.

## Home school links

Parents and carers are welcome and are encouraged to attend school events and keep in contact with school. The school has specialist Pastoral Staff who support students learning and liaise closely with parents and carers to ensure that the well being of each student is constantly monitored, reviewed and developed depending on individual need. They arrange home visits and other contacts to help develop mutually supportive links.

## General environment

The school, which has undergone extensive renovation, is in a converted Victorian villa situated at the edge of a large park in Blackburn. All staff are committed to providing a welcoming, happy and motivating learning campus where with focused support and challenge, all learners make progress and achieve their best. Derwent House School is part of the Witherslack Group of Schools.

## Aims and philosophy

The primary aim of the school is to present students with an exciting, dynamic and personalised curriculum, utilising local community resources and provision through experiential learning and practice. These will include access to the National Curriculum, ASDAN accreditations, as well as link courses within local colleges, work related learning visits and placements. All subjects carry accreditation at different levels, so that students can achieve according to their ability. The staff at Derwent House School work as a team to provide effective teaching and pastoral support to meet students' speech, language and communication needs, academic, social, emotional and behavioural needs. The school environment promotes mutual respect, healthy lifestyles and creates opportunities to develop self-esteem based on the 'Resilience Theory'.

## Staff qualification and selection

All staff are recruited through a high quality selection procedure and their suitability is checked through the Criminal Records Bureau at Enhanced Level.

## Doncaster School for the Deaf

Leger Way, Doncaster DN2 6AY

Tel: 01302 386710 Fax: 01302 361808

Email: [principal@ddt-deaf.org.uk](mailto:principal@ddt-deaf.org.uk) Website: [www.deaf-school.co.uk](http://www.deaf-school.co.uk)

**Established:** 1829

**Executive Principal:** Mr A W Robinson

**Status:** Independent (Special)

**Co-educational Boarding and Day**

**Age Range:** 5-16

**Number on Roll:** 21 – Girls: (8) Boys: (13)

**Special Needs Provision:** AHDH, BESD, CP,

DYS, HI, MLD, PMLD, SLD, SP&LD,

VI and WA I

**Type of School:** Mixed – Full/flexible/  
weekly and 52 week provision

**Enrolment throughout the year**

**Please contact us to arrange an informal visit**

### Special needs catered for

Doncaster School for the Deaf provides high quality education and care for deaf and hearing impaired resident and day pupils, some of which have other special needs. A house on campus specifically accommodates our 52 week residents offering a real, safe, home environment. The language and communication policy in Doncaster School for the Deaf is a pupil-centred approach, based on their method of preferred communication. We are fully able to meet the needs of pupils who communicate through English.

### Specialist facilities

The School has bright and modern classrooms, all with interactive whiteboards, and designed to provide ideal acoustic conditions.

### Support services provided

Full-time Audiologist, Speech and Language Therapist, team of Learning Support Assistants. The School has a visiting doctor and an on-site fully-qualified Nurse.

### Home school links

We encourage close links with parents, and they are welcome to visit the School. There are facilities for overnight stays if the need arises. Regular reports about resident pupils' social development are sent to parents. All parents are invited to an Annual Review meeting where their child's progress is discussed fully, along with their targets for the forthcoming year and their Individual Educational Plan (IEP). A Parent's Day is held annually and all parents are invited to see their child's work and discuss progress with teachers.

### General environment

The School occupies a large pleasant site and has a superb sports hall, heated indoor swimming pool and extensive playing fields, providing probably the finest sports and recreational facilities for deaf pupils.

### Aims and philosophy

We seek to provide appropriate education from the earliest years to 16. This can, and often is, extended into Further Education through Doncaster College for the Deaf, which shares the same campus.

### Staff qualification and selection

The experienced staff includes Teachers of the Deaf and Learning Support Assistants. Our qualifications include GCSE, Entry Level certificate of achievement, ASDAN, CoPE (Certificate of Personal Effectiveness) and unit awards. Key Stage 4 pupils access vocational courses at the college as part of a 14-16 curriculum.

## Eastwood Grange – Priory Education Services

**E**

**Milken Lane, Ashover, Nr Chesterfield, Derbyshire S45 0BA**  
**Tel: 01246 590255 Email: eastwoodgrange@priorygroup.com**  
**Website: www.priorygroup.com/education**

**Principal: Mr Ray Scales**

**Status: Independent Special School**

**Age Range: 11-16**

**Type of School: Boys – Residential and day**

**Length of School Year: 38-52 weeks**

**Fees: Available on request**

**Number of Places: 34**

### Special needs catered for

Eastwood Grange provides specialist education, care and therapy within a structured learning environment for boys with severe behavioural, emotional and social difficulties. Many of the young people in our care may have experienced trauma, inconsistent and confusing care and emotional rejection. Their behaviour will be challenging and most will have experienced considerable disruption to their education and consequently lack confidence in their own abilities.

### Specialist facilities

We provide a high quality, positive residential experience for pupils who have both failed within, and been failed by the system. Our primary role is the management of change. We aim to help our pupils to understand their problems and to identify and implement ways of alleviating them. We aim to reverse the downward spiral of failure and replace it with optimism through finely graded, achievable goals. We believe positive approaches produce positive changes which can compensate for past failure and prepare youngsters for the future.

### Support services provided

Individual needs are thoroughly assessed and intervention strategies are implemented within the 24-hour curriculum. Individual support and counselling are provided through a key worker system.

### Education

The National Curriculum is followed and we cater for varying levels of ability with pupils working towards nationally accredited exams, including GCSEs. Systematic classroom management strategies are used to provide positive reinforcement for pupils and encourage pro-social behaviour.

### Aims and philosophy

Our aim is to make a difference to the lives of young people who have behavioural, emotional and social difficulties by being a centre of excellence for education, residential care and therapy. Through the management of change we help young people to redress negative experiences and develop their potential.

**Awarded 'Outstanding' OFSTED status for the last five years (care).**

## Eden Grove – Priory Education Services

**Bolton, Appleby, Cumbria CA16 6AJ**

**Tel: 01768 361346 Email: edengroveschool@priorygroup.com**

**Website: www.priorygroup.com/education**

**Principal: Mr John McCaffrey**  
**Status: Independent Special School**  
**Age Range: 8-19**  
**Number of Places: 65**

**Type of School: Boys and girls, residential, day, flexi-boarding**  
**Length of School Year: 38-52 weeks**  
**Fees: Available on request**

### Special needs catered for

Boys and girls aged 8-19. Most of the young people referred will have a Statement of Educational Need and will have complex needs including behavioural, emotional and social difficulties and autistic spectrum disorders. Some may also have attention deficit hyperactive disorder and attention deficit disorder.

### Specialist facilities

A Department for Education-approved school and a registered Children's Home, regulated and inspected for education and social care under Ofsted. The school is set in 13 acres of grounds and dates back to 1856 when it was a country estate with its own grounds and fishing rights. Recently the school has undergone significant developments to provide specialist educational facilities (purpose-built science, CDT, food technology and general classrooms and a comprehensive IT suite), an all-weather football pitch and two adventure playgrounds. This enhances the provision of two football pitches and exclusive use of the River Eden mainly for fishing. Young people live together in residential units of between 4-10. Each unit has its own kitchen and lounge and provides either single or double bedrooms, some with en-suite facilities. We have a separate provision off site for our 16+ programme working towards independence.

### Support services provided

The school has a partnership agreement with the Cumbria CAMHS Team and also, as a member of the Priory Group, we have access to additional specialist clinical and mental health services. Our staff team also consists of a speech & language therapist and two counsellors, one of whom specialises in working with attachment disordered pupils. Ongoing negotiation to establish an Independent Visitors service through the NSPCC.

### Education

We follow the National Curriculum and have small class sizes of up to seven with high staffing ratio's. At Key Stage 4 we have created an interesting and motivating programme of vocational studies where activities take place both on and off site, and include outdoor pursuits (Frontier Education) where boys can work towards the John Muir Trust Award, life skills, community work, gardening, trade skills, welding and basic engineering. We also offer a Land Based studies programme, taster courses at local colleges and extensive links for work experience through Cumbria Business Education Consortium. We offer qualifications in GCSE's, NVQ in Public Services (through Cumbria Army Cadet Force – the school has its own cadet detachment), Duke of Edinburgh Award Scheme, AQA – Entry Level, Key Skills. We also work very closely with Cumbria Connexions to help towards a transition back to the home area.

### Post 16 facility

Croft House provides accommodation for up to 12 young people aged 16-19 preparing them for independent living, further education and employment.

### Aims and philosophy

Through an integrated programme of education, care and therapy, young people learn how to affect change in their lives and develop their own self worth. Eden Grove prepares them for integration into society and to lead independent lives. We aim to help our young people develop socially acceptable behaviour and achieve this by providing encouragement and constructive responses to inappropriate behaviour.

**Junior Department: 220 Lambeth Road, London SE1 7JY Tel: 0207 76303789**  
**Senior Department: 30 Causton Street, London SW1P 4AU**  
**Telephone: 0207 9765456 Fax: 0207 9765905**

**Established: 1982**

**Principal: Ms Jacqueline Murray BA (Hons)**

**MSc MEd DipPsychol DipRSA (SpLD)**

**Status: Independent**

**DfE Registered No: 213/6327**

**Age Range: 5-14**

**Number on Roll: 157**

**Teaching Staff: 50**

**Special Needs Support Staff: 4**

**Length of School Year: 38 weeks**

**Fees: £8,750 per term**

## Special needs catered for

Specific learning difficulties (dyslexia and dyspraxia). This can include problems with receptive and expressive language, information processing, and auditory and visual memory and sequencing. Some children may also have difficulties with fine and gross motor control. Entrants must be of at least average intelligence and able to achieve an average score or better on an IQ test.

## Specialist facilities

The full National Curriculum is taught with the teaching style modified and the content adapted so that every lesson is accessible to every child. Daily intensive help is provided in numeracy and literacy in small groups. Great emphasis is placed on information technology, word processing and touch typing. All children receive an individualised programme.

## Support services provided

The trans-disciplinary team includes full-time speech and language therapists and occupational therapists on site. The School's Principal is a fully-qualified Educational Psychologist. A proportion of the children are financed by a local authority and close contact is constantly maintained with the authorities' representatives and with parents.

## Home school links

Parents are counselled at length at the initial assessment of the child. Thereafter the school provides on-going support, especially prior to the child's transfer to secondary school. There are termly reports and parent/teacher meetings and access at other times whenever needed. There are lectures and social functions. Homework is closely monitored.

## General environment

The premises are modern with light, spacious classrooms and a large assembly hall. The school is on two sites. Causton Street has gym equipment and a stage for drama productions. There are DT, art and music rooms, science and computer labs and a computer-referenced library. The location is in central London. Playtime and games take place in a private area and swimming at the local baths. There are frequent outings and an annual residential field trip.

## Aims and philosophy

The aim of the school is to build up children's skills and confidence to enable most to return to mainstream schooling after two to three years.

## Farleigh College – Priory Education Services

**Newbury, Near Mells, Somerset BA11 3RG**

**Tel: 01373 814980 Email: [farleighcollege@priorygroup.com](mailto:farleighcollege@priorygroup.com)**

**Website: [www.priorygroup.com/education](http://www.priorygroup.com/education)**

**Principal: Mr Alun Maddocks**

**Status: Independent Special School**

**Age Range: 11-19**

**Number of Places: 47**

**Type of School: Co-educational – Residential and day**

**Length of School Year: 38 weeks**

**Fees: Available on request**

### Special needs catered for

Specialist education for young people aged 11-19 with Asperger's Syndrome (AS) and associated disorders. Pupils often have many strengths and considerable potential but their progress is typically greatly impaired by the difficulties associated with Asperger's Syndrome.

### Specialist facilities

Farleigh College provides a broad, balanced and differentiated curriculum, including a modified National Curriculum, relevant to the needs of pupils with autistic spectrum disorders (ASD). We use teaching, residential and leisure situations as learning opportunities.

### Support services provided

Education is continued beyond the normal school day with additional sessions in literacy and numeracy, independent living skills, and through special activities including art, music and outdoor activities. Pupils have access to a range of therapies including speech and language therapy to develop communication skills and occupational therapy to develop areas of daily functioning and independence.

### Education

We follow the National Curriculum and GCSEs and GNVQs are offered in a wide range of subjects. Class sizes are small and well supported with two learning support assistants per class of eight. Some pupils attend a local mainstream school or further education college with support for particular subjects. Information and Communication Technology plays a very important part in the education programme.

### Residential care

We offer a safe, secure and predictable environment in which young people come to understand their own areas of difficulty and learn skills and techniques in order to overcome them. New pupils are allocated a personal tutor from the care or teaching staff whose primary task is to ensure the happiness and wellbeing of those pupils in their care.

### Aims and philosophy

Pupils will develop the skills needed to manage their behaviour in social settings, cope with their anxieties, develop strategies to cope with everyday living and become empowered to make choices for their future. They will work towards the next step in their independence with preparation for further and higher education, training or employment.



[www.hesleygroup.co.uk](http://www.hesleygroup.co.uk)

Referrals 0800 055 6789



## Fullerton House School

Rated 'Outstanding' in Care by Ofsted

Fullerton House School offers residential and education services for special children and young people who experience autism, severe and complex learning difficulties and who exhibit associated challenging behaviours.

Registered for up to 46 young people from ages 8 to 19 of mixed gender.

Located within the community of Denaby, Doncaster.

Parent Quote *"a marvelous establishment with the talent, skill and affection needed to help support your child"*

Website: [www.fullertonhouseschool.co.uk](http://www.fullertonhouseschool.co.uk)  
[enquiries@hesleygroup.co.uk](mailto:enquiries@hesleygroup.co.uk)



## Grateley House School – Part of Cambian Group

Pond Lane, Grateley, Andover, Hants SP11 8TA

Tel: 0800 288 9779 Fax: 020 8735 6151

Email: [education@cambianguroup.com](mailto:education@cambianguroup.com) Website: [www.cambianguroup.com](http://www.cambianguroup.com)

Type of School: Asperger Syndrome,  
Co-educational, Boarding & Day  
Age Range: 9-19

Length of School Year: 38 weeks  
Head Teacher: Sue King – BA (Hons),  
PGCE, DipAdvEd

### Special needs catered for

Asperger's Syndrome (AS) and other associated difficulties.

### Our approach

*"In fully meeting its aims, Grateley House School provides an outstanding quality of education and boarding provision for its students. The quality of the curriculum is outstanding".* Ofsted Report 2009. Success and, hence, progress is encouraged through accentuating the positive, and rewarding students appropriately. Staff employ positive intervention strategies in dealing with aggressive or inappropriate behaviour. The aim is to create a general ambience of good humour within well-defined structures.

### Teaching & lifelong learning

Students at Grateley House School have access to a broad and balanced Curriculum which extends throughout the waking hours. A significant part of the learning process is catered for in after-school, structured activities, all designed to identify and develop skills and talents. The full range of courses taken in Key Stage 4 are assessed or externally examined. These include GCSE, Entry Level Certificate and the Unit Award Scheme. Work experience is introduced at Key Stage 4 as well as links with local FE colleges.

### Environment

We provide an ASD therapeutic environment by which students learn tolerance and coping skills, social and functional communication skills, sensory / visual / motor integration, and behaviour management programmes are also part of our outcome-based measurements.

### Contact us & visits

Please call our dedicated Parent Liaison Officers on 0800 288 9779 to discuss in confidence about your child's needs, the admission process or to arrange a visit. For a copy of the prospectus please visit our website on [www.cambianguroup.com](http://www.cambianguroup.com) or call us on the number above.



## Barnardo's High Close School

Wiltshire Road, Wokingham, Berkshire RG40 1TT

Tel: 0118 9785767 Fax: 0118 9894220

**Established:** 1938

**Principal:** Mrs Rose Mahony

**Status:** Non-maintained Residential

**Special School**

**DfE Registered No:** 872/7006

**Age Range:** 10-16

**Number on Roll:** 65

**Type of School:** Co-educational –

**Boarding & day**

**Teaching Staff:** 15

**RPW Staff:** 32 + 3 Field Social Work Staff

**LSA Staff:** 12

**Length of School Year:** 39 weeks

**Fees:** On application

### Special needs catered for

Social, emotional, behavioural and educational difficulties.

### Specialist facilities

Modern, purpose-built school providing well equipped classrooms, many of which have interactive whiteboards and individual laptops for pupils. Specialist areas for Art, Music, ICT, Science and CDT and a self-contained wing for junior education at Key Stage 2. Four purpose-built residential units provide mainly single bedrooms and spacious areas for relaxing and dining for up to ten boys and girls. Units are all equipped with CCTV which is monitored by waking night staff. Day pupils have their own unit which provides a breakfast club and after school activities.

### Support services provided

Very good staff:pupil ratios allow for small classes (average six pupils), regular individual PSHE sessions and a range of both campus and community-based activities. Specialist support for pupils is provided by a visiting speech and language therapist, a school counsellor, a consultant educational psychologist and a team of Field social work and aftercare staff.

### Home school links

The Field social work department provides specialist 52-week support for parents and carers. This complements the regular contact made between residential and day pupil project workers and the pupils' families. Parents/carers are encouraged to attend annual reviews and planning meetings and school reports are sent out twice a year. There are a number of events each year to which parents are invited, eg: Education Consultation Evening, Sports Day, Christmas Concert and Prize Giving.

### General environment

High Close has its own very attractive campus within the Berkshire town of Wokingham. It is situated five minutes from the town centre and is easily accessible from the M4. Wokingham has a mainline railway station and is within one hour's travel from the centre of London.

### Aims and philosophy

High Close provides a high quality academic and social education for its pupils in a safe, caring and stimulating environment. The curriculum, which includes the National Curriculum offered to GCSE Level and a programme of vocational skills, some of which are taught at local colleges, enables children to achieve the best of their ability and develop the social skills and independence necessary for them to become active and responsible citizens in our multi-cultural society. An active school council ensures that pupils participate in the running of their school.

### Staff qualification and selection

The school has a rigorous and carefully constructed selection procedure which involves members of the School Council in some of the interviews. All staff are CRB cleared. All managers have qualifications relevant to their posts and all teachers have qualifications in their specialist subjects. RPWs and LSAs either have NVQ Level 3 qualifications or their equivalent or are working to achieve them. Child protection training is carried out regularly, as is care and control training. Professional development is given a high priority, with staff expected to attend national conferences and keep abreast of the latest developments within their specialist areas.

**Barnardo's Registered Charity Nos 216250 and SCO37605**

**Rope Hill, Boldre, Lymington Hampshire, SO41 8NE**

**Tel: 0800 288 9779 Fax: 020 8735 6151**

**Email: [education@cambianguroup.com](mailto:education@cambianguroup.com) Website: [www.cambianguroup.com](http://www.cambianguroup.com)**

**Type of School: Autism with Associated  
Complex Needs, Co-educational, Boarding  
Age Range: 11-19**

**Length of School Year: 52 weeks  
Head Teacher: Jenny Wright – BA(Ed),  
MA(Ed), NPQH**

### **Special needs catered for**

Autism with Associated Complex Needs.

### **Our approach**

*“The inspection endorses the view of the school that it provides outstanding opportunities for students to develop their spiritual, moral, social and cultural understanding”* – Ofsted Report 2009. The school offers its students a consistent Curriculum across the waking day. In other words, an environment in which consistency and supportive response to positive behaviour is provided at all times, whether in the classroom, during care time or at night.

### **Teaching & lifelong learning**

The school consists of four class groups which are broadly age-based. All groups plan according to their students’ relevant Key Stage with consideration for the students’ individual needs. The school day is organised to provide for both individual and group work, for classroom and community based activities and for academic, personal and social skills to be developed. Although the overall focus is on the areas identified above, the emphasis varies throughout the groups.

### **Environment**

We provide an ASD therapeutic environment by which students learn tolerance and coping skills, social and functional communication skills, sensory / visual / motor integration, and behaviour management programmes are also part of our outcome-based measurements.

### **Contact us & visits**

Please call our dedicated Parent Liaison Officers on 0800 288 9779 to discuss in confidence about your child’s needs, the admission process or to arrange a visit. For a copy of the prospectus please visit our website on [www.cambianguroup.com](http://www.cambianguroup.com) or call us on the number above.

## Ingfield Manor School

Five Oaks, Billingshurst, West Sussex RH14 9AX  
 Telephone: 01403 782294/784241 Fax: 01403 785066

**Established:** 1961

**Head Teacher:** Mr Alistair Bruce

**Status:** Non-maintained

**DfE Approved No:** 938 7023

**Age Range:** 3-16

**Number on Roll:** Up to 41

**Type of School:** Mixed –

**Weekly, boarding and day**

**Team Staff:** 45

**Length of School Year:** 38 weeks

**Fees:** On application

### Special needs catered for

Day or weekly boarding for children with Cerebral Palsy.

### Specialist facilities

Specially adapted buildings with purpose-built classrooms and residential accommodation. Hydrotherapy pool. The Dame Vera Lynn School for Parents works with children aged 0-5 and their parents. It is provided with The Dame Vera Lynn Trust for Children with Cerebral Palsy.

### Support services provided

Medical oversight is provided by orthopaedic, neuropaediatric and paediatric consultants as well as a full range of visiting specialists. Two nurses are on staff, available 24-hours a day.

### Home school links

Excellent parental links are encouraged through annual reviews, regular meetings and home school books.

### General environment

Extensive facilities in own grounds, close to Billingshurst.

### Aims and philosophy

The school has a unique place in the development of Conductive Education in this country. Ofsted has concluded, *"This is a centre of excellence for an alternative approach to the education of children with Cerebral Palsy."* The latest Ofsted report (2007) described the school as 'outstanding'. Pupils follow National Curriculum core and foundation subjects. The curriculum is based on an holistic view of pupils and their intellectual, emotional and social needs. Technology features strongly and is used to support the pupils as they extend their repertoire of skills. The school has a national reputation for the development of computer-assisted communication.

### Staff qualification and selection

Staff work in special multi-disciplinary teams reflecting the theory and practice of Conductive Education. All staff undertake the school's two-year training programme and have prior qualifications in Teaching, Therapy, Nursing or Child Care. There are a number of Conductors qualified in Conductive Education through the Peto Institute.

## I

**Ingfield Manor School**

**Five Oaks, Billingshurst, West Sussex RH14 9AX**  
**Telephone: 01403 782294/784241 Fax: 01403 785066**

**Established: 1961**

**Head Teacher: Mr Alistair Bruce**

**Status: Non-maintained**

**DfE Approved No: 938 7023**

**Age Range: 3-16**

**Number on Roll: Up to 41**

**Type of School: Mixed –**

**Weekly, boarding and day**

**Team Staff: 45**

**Length of School Year: 38 weeks**

**Fees: On application**

**Special needs catered for**

Day or weekly boarding for children with Cerebral Palsy.

**Specialist facilities**

Specially adapted buildings with purpose-built classrooms and residential accommodation. Hydrotherapy pool. The Dame Vera Lynn School for Parents works with children aged 0-5 and their parents. It is provided with The Dame Vera Lynn Trust for Children with Cerebral Palsy.

**Support services provided**

Medical oversight is provided by orthopaedic, neuropaediatric and paediatric consultants as well as a full range of visiting specialists. Two nurses are on staff, available 24-hours a day.

**Home school links**

Excellent parental links are encouraged through annual reviews, regular meetings and home school books.

**General environment**

Extensive facilities in own grounds, close to Billingshurst.

**Aims and philosophy**

The school has a unique place in the development of Conductive Education in this country. Ofsted has concluded, *"This is a centre of excellence for an alternative approach to the education of children with Cerebral Palsy."* The latest Ofsted report (2007) described the school as 'outstanding'. Pupils follow National Curriculum core and foundation subjects. The curriculum is based on an holistic view of pupils and their intellectual, emotional and social needs. Technology features strongly and is used to support the pupils as they extend their repertoire of skills. The school has a national reputation for the development of computer-assisted communication.

**Staff qualification and selection**

Staff work in special multi-disciplinary teams reflecting the theory and practice of Conductive Education. All staff undertake the school's two-year training programme and have prior qualifications in Teaching, Therapy, Nursing or Child Care. There are a number of Conductors qualified in Conductive Education through the Peto Institute.

**Harwich Road, Bradfield, Manningtree, Essex CO11 2XW**  
**Tel: 01255 870 311 Email: jacqueshall@priorygroup.com**  
**Website: www.priorygroup.com/education**

**Established: 1988**

**Status: Independent Special School**

**Age Range: 11-18**

**Number of Places: 21**

**Type of School: Co-educational – Residential and day**

**Length of School Year: 38-52 weeks**

**Fees: Available on request**

### Special needs catered for

Jacques Hall is both a residential school and a registered Children's Home providing education and care for young people with behavioural, emotional and social difficulties and complex needs. They may present a range of challenging and often anti-social behaviour, resulting from severe emotional deprivation, neglect and physical and sexual abuse. All pupils have experienced profoundly disturbed personality development. They may also be diagnosed as suffering from conduct disorder, attachment disorder, and developmental delay or having social and/or learning difficulties.

### Specialist facilities

Pupils are grouped in small classes with a high staff-pupil ratio. The curriculum is broad, balanced, relevant and differentiated to meet individual pupil needs. Teaching and residential areas are separate and residential accommodation is in small, homely groups. A further satellite facility is situated at Orchard House about ten miles from the school, which provides a unique opportunity to complete the transition to independent living with access to Further Education, work-based learning and/or employment.

### Support services provided

Pupils have access to a range of therapies on-site in specially designated therapy rooms including psychiatrist, educational psychologist and art therapist. Each pupil has an individual education and care plan, integrated with therapy and tailored to meet their needs.

### Education

Full time education is provided on site in a purpose-built school. The National Curriculum is on offer and pupils are encouraged to work toward qualifications including GCSEs, ASDAN and Entry Level awards. Strong links with local colleges and the local community enable us to provide vocational placements and opportunities to develop independence.

### General environment

The main house is situated within a 16-acre estate overlooking the Stour Estuary in Essex. It is within easy reach of London and the M25 and the east via the A14 and A12.

### Aims and philosophy

Jacques Hall aims to help young people reconnect with society, return to learning and manage their behaviours to affect positive change. We enable pupils to make independent life choices and to achieve greater independence as they reach adulthood. We provide a 'child-centred' environment, which is stable, safe and supportive, and realises the five outcomes defined in *Every Child Matters*: to be healthy; to stay safe; to enjoy and achieve; to make a positive contribution and to achieve economic wellbeing.

## Kisimul School

The Old Vicarage, 61 High Street, Swinderby, Lincoln LN6 9LU

Tel: 01522 868279 Fax: 01522 866000

Email: [admissions@kisimul.co.uk](mailto:admissions@kisimul.co.uk) Website: [www.kisimul.co.uk](http://www.kisimul.co.uk)

**Founded:** 1977

**Status:** Independent Residential

**Special School**

**DfE Reg No:** 925/6034

**Number on Roll:** 56

**Age Range:** 8-19

**Head of Education:** Danny Carter

**Length of School Year:** 52 weeks

**Type of School:** Mixed

**Fees:** On application

### Special needs catered for

Kisimul School is one of the UK's leading independent residential special schools, offering a homely and safe environment for children who have severe learning difficulties, challenging behaviour, autism and global developmental delay.

### Specialist facilities

Kisimul School offers residential education, care and leisure programmes at both its Upper and Lower School, for up to 52 weeks of the year. The school is registered with the Department for Education and Ofsted. Limited day placements are also offered at both our Upper and Lower School. Woodstock House provides a highly structured school curriculum to address the very specific needs of its pupils. Classes are small and staffed at a ratio of at least 1:1. The integrated developmental curriculum incorporates the National Curriculum (Lower School) or Adult Pre-Entry Curriculum Framework (Post-16) and a wide range of therapeutic programmes, collectively designed to meet the diverse sensory needs of the pupils. These include Speech & Language therapy, Music therapy, Aromatherapy and EASIE (Exercise and Sound in Education). A key priority is to develop pupils' communication skills, and since many are non-verbal the use of Makaton signing and PECS (Picture Exchange Communication System) is taught. Pupils also benefit from our in-house Educational Psychology support team. Pupils participate in the Duke of Edinburgh Award and gain accreditation through the ASDAN 'Towards Independence' scheme.

### General environment

Kisimul School was founded in 1977 in a comfortable Georgian house (known today as the Old Vicarage) set in four acres within the small Lincolnshire village of Swinderby. Facilities at the Old Vicarage include an indoor heated swimming pool, large playground, soft play areas with ball pool and multi-sensory rooms for relaxation and stimulation. In 2003, the Upper School, Acacia Hall opened, offering the same standard of exceptional care and education within grounds adapted and utilised in a way to reflect the older age group. Acacia Hall is situated within the village location of Friesthorpe, a few miles outside the Lincolnshire town of Market Rasen. It offers riding stables, an adventure playground, a collection of small farm animals and an area dedicated to horticulture.

### Home school links

Kisimul School encourages parents to maintain contact with their child by visits, telephone or post, and welcomes visits to the school. Parents are encouraged to attend reviews concerning their child and are invited to take an active part in fund raising events for the school. Newsletters are also sent out each term advising parents of important forthcoming dairy events and news from the school.

### Aims and philosophy

Every child is entitled to develop in an environment which is conducive to learning. The environment should reflect the Every Child Matters outcomes of being healthy, staying safe, enjoying and achieving, making a positive contribution and achieving economic well-being. Pupils should feel secure, enjoy learning and be rewarded for effort. Woodstock House provides the tools for pupils to manage and control their own life-style and behaviour. Kisimul School's mission is to continuously strive for excellence in the care and education of its pupils, with a vision to have the best assisted living environment. Kisimul School provides a caring and homely environment at all times, where pupils can grow and develop their skills, individuality and independence to carry them through to adulthood. The School works closely with the parents, carers and professionals from its placing authorities to ensure that the highest possible standards of care and education are achieved.

Naylor's Road, Liverpool L27 2YA

Tel: 0151 4877211 Fax: 0151 4877214

Email: [admin@lakesideschool.uk.com](mailto:admin@lakesideschool.uk.com) Website: [www.lakesideschool.co.uk](http://www.lakesideschool.co.uk)

**Head Teacher: Mrs V. I. Size BEd (Hons),**

**MEd Autism (Children)**

**Status: Independent**

**DfE Registration No: 341/6082**

**DfE Approved: January 2003**

**Age Range: 5-13**

**Number on Roll: 24**

**Teachers: 6**

**Special Support Assistants: 8**

**Pastoral Care Staff: 2**

**Type of School: Co-educational day special school with residential provision off-site**

**Fees: Available on request**

## Special needs catered for

Key Stage 1, 2 and in some cases Key Stage 3 pupils who exhibit complex learning and communication difficulties with associated challenging behaviours.

## Specialist facilities

The school offers full access to the National Curriculum, differentiated and modified where appropriate. The school is particularly well resourced and all classrooms have access to the very latest technology, including touch screen Plasma screens.

## Support services provided

Lakeside School has access to a wide variety of therapeutic services, including a resident clinical team with access to therapeutic services, including educational psychology, occupational therapy and speech and language therapy.

## Home school links

The Pastoral Care of all children at Lakeside School is within the supervision of the Deputy Head, Head of Pastoral Care who maintains a close liaison with parents and other primary carers as well as statutory authorities.

## General environment

The school is situated in a rural environment on the outskirts of Liverpool within a few minutes distance of the major motorway junction between the M57 and M62. The building is a converted farmhouse and is located within attractive grounds including a lake, poly-tunnel, pond-dipping pond and woodland walk area which are used for educational purposes.

## Aims and philosophy

In partnership with parents/carers and Children's Services Authorities we aim:

- 1/ To strive for the highest quality of education and care through which every child will achieve their full potential, both academically and personally.
- 2/ To provide a happy, secure and caring environment where children are valued equally and can develop their confidence and self-esteem, independence, self discipline and respect and concern for others.
- 3/ To offer a broad, balanced and stimulating curriculum, that meets the individual needs of each child.
- 4/ To develop positive links between home, school and the wider community in order to support children's learning.
- 5/ To encourage the development of teaching and non-teaching staff, enabling them to work together as a team, sharing expertise and valuing each other's strengths.

## Staff qualification and selection

The staff are recruited from mainstream and special education. All teachers are well qualified and experienced, and all staff are encouraged to develop professionally. The school has established an excellent reputation and the November 2010 Ofsted inspection judged Lakeside School to be Outstanding.



Cambian



## Specialist education at a glance

- 30 years experience
- Trusted by over 70 local authorities
- Rated highly by Ofsted for providing 'Outstanding education and care' (2006, 2007, 2008, 2009)

For more information call:

**0800 288 9779**

[www.cambiagroup.com](http://www.cambiagroup.com)



INVESTOR IN PEOPLE



**OAASIS**

## Need advice and information on special educational needs? There is an answer...

OAASIS is a Free SEN information service offering support, advice and publications to parents and professionals caring for children and young adults with learning disabilities, Autism and Asperger Syndrome.

For more information call:

**0800 902 732**

[www.oaasis.co.uk](http://www.oaasis.co.uk) OAASIS is supported by the Cambian Group

**Wildmoor Lane, Sherfield-on-Loddon, Hook, Hampshire  
RG27 0JD Tel: 01256 882394 Email: info@loddonschool.co.uk**

**Established: 1988**

**Principal: Lynn Young BEd MEd(SLD)**

**Head Teacher: Karen Rookes BEd MA (Ed)**

**Status: Independent**

**DfE Approval No: 850 6005**

**Age Range: 8-19**

**Number on Roll: 28**

**Type of School: Mixed – full boarding**

**Teaching Staff: 26**

**Residential Care Staff: 100**

**Special Needs Support Staff: 18**

**Others: 36**

**Length of School Year: 52 weeks**

**Fees: On Application**

## Special needs catered for

Severe learning difficulties, including autism and seriously challenging behaviour ranging from self injury and aggression to property destruction.

## Specialist facilities

High staff to children ratio, adventure play, swimming pool, sensory and soft play spaces, large outdoor spaces, horse-riding, art, waking hours curriculum and National Curriculum.

## Support services provided

Music therapy, speech and language therapy, clinical psychology, aromatherapy and massage, and osteopathy.

## Home school links

Children and young people are reviewed on a termly basis by an inter-disciplinary team, involving parents, school staff and outside professionals. Our children and young people are supported to send picture letters, make phone calls, and visits home.

## General environment

The Loddon School is situated five miles from Basingstoke with easy access to the main rail service to Waterloo, and M3 and M4. The school is set in ten acres of parkland, and enjoys all the amenities of the village and nearby town.

## Aims and philosophy

The school aims to provide an environment where our children and young people can learn to relate, communicate and participate in everyday life, whatever their level of learning disability. Methods used incorporate a commitment to non-aversive approaches to behaviour, support positive intervention, and a range of therapeutic approaches based on relaxation. The school works hand in hand with parents to develop an effective partnership. PLLUSS (Personalised Learning for Life Using Supportive Strategies) is The Loddon School's unique personalised and individualised curriculum especially suited to children and young people learning at early P levels.

## Staff qualification and selection

The school employs more than 170 staff to care for 28 children. Staff include teachers, social workers, graduates with appropriate specialised skills, NNEB's, nurses and care staff, with, or working towards NVQ Level 3. The school abides by Safer Recruitment and CRB checks and references are taken up for all staff before appointment.

## Marchant Holliday School

North Cheriton, Nr Templecombe, Somerset BA8 0AH

Tel: 01963 33234 Fax: 01963 33432

Email: office@marchant-holliday.co.uk Website: www.marchantholliday.co.uk

**Established:** 1951

**Head Teacher:** Mr. T.J. Kitts (M.Ed, B.Ed (Hons), DPSE/SEN)

**Status:** Independent Charity DfE

**DfE Reg No:** 933/6089

**Age Range:** 5-12

**Number on Roll:** The School can cater for 30 boarders & 5 day pupils

**Type of School:** Boys – Fortnightly/flexible boarding/day

**Teaching Staff:** 8

**Residential Care Staff:** 10

**Special Needs Support Staff:** 6

**Length of School Year:** 36 weeks

**Fees:** On application

### Special needs catered for

Social, emotional & behavioural difficulties, mild autism, Asperger's Syndrome, Dyslexia, Dyspraxia, ADHD, PDD, ODD, attachment disorder.

### Specialist facilities

A secure and structured environment which promotes self-esteem and the enjoyment of school life. Purpose-built classrooms and a wide range of facilities including sports hall, heated outdoor swimming pool, sports field, adventure play equipment, science and technology room. Homely living accommodation with single and double rooms, the majority with en suite facilities.

### Support services provided

The school retains the services of a qualified child counsellor and a social worker. Speech therapy, OT or other services can be arranged.

### Home school links

The school is warm and welcoming, open to visits and phone communication is encouraged. A weekly pupil report is sent home and staff communicate with families and carers weekly by telephone. We offer flexible boarding opportunities, either weekly or fortnightly, as well as some day placements which can be tailored to the needs of individual pupils.

### General environment

The school is situated in beautiful surroundings near Wincanton in Somerset and consists of a large country house in 17 acres of woodland, field and gardens. It is close to the A303 trunk road and is readily accessible from London, Bristol, Southampton, the South and West, and from all areas of the home counties. There are mainline train stations nearby at Castle Cary and Templecombe.

### Aims and philosophy

The school aims to offer positive learning experiences within a secure and caring environment which will enable each child to develop his full potential for social, emotional, physical and intellectual growth. We consider the children's happiness to be important and place emphasis on developing feelings of self worth and achievement. The curriculum is carefully planned to promote success and employs a flexible approach to develop the children's potential. All National Curriculum subjects are taught, and children receive a high level of individual support to facilitate the acquisition of skills and knowledge. The school encourages children to examine and take responsibility for their behaviour and promotes acceptable behaviour patterns with the use of praise and rewards. Many children make a successful transition back to mainstream schooling and find acceptance within their homes and communities.

### Staff qualification and selection

The school's governing body and staff are fully aware of their obligations under Section 87 of the Children Act, to safeguard and promote the welfare of children accommodated at the school. All staff are rigorously screened before they are appointed in order to ensure the continuing quality of service provided. All staff are qualified and some have specialist teaching qualifications. Care staff work on clear guidelines; staff development and in-service training is an important part of school life. The school has a complaints procedure.

**Mark, Highbridge, Somerset TA9 4NP**  
**Tel: 01278 641632 Email: [markcollege@priorygroup.com](mailto:markcollege@priorygroup.com)**  
**Website: [www.priorygroup.com/education](http://www.priorygroup.com/education)**

**Established: 1986**

**Principal: Michelle Whitham Jones**

**DfE Approved 1991 – Beacon School**

**Age Range: 10-19**

**Number of Places: 100**

**Type of School: Co-educational – full/weekly/day**

**Length of School Year: 35 weeks**

**Fees: Available on request**

### Special needs catered for

Mark College is a specialist secondary school for boys and girls aged 10-19 with specific learning difficulties associated with dyslexia and language disorder. Many students have struggled in mainstream schools and benefit hugely from being in an environment with other SpLD students where the level of support and teaching methods are specifically designed to overcome the challenges that dyslexic pupils face.

### Specialist facilities

There is a large sports hall and ample playing fields. Many computers and excellent boarding facilities. Pleasant, open site with all facilities on one campus. Well resourced. Mark College prides itself on its sporting achievements, often competing at both county and national levels, and offers extensive sport and leisure facilities across nine acres of games fields, two hard tennis courts and a large sports centre.

### Support services provided

Subject specialist staff trained to teach students with SpLD. Small classes and work structured for individual student access. The College aims to reach the whole child taking into consideration their strengths, weaknesses and individuality.

### Home school links

Four reports per annum (varied formats). Frequent phone contact. Parents' days. Open day at year end.

### General environment

The College is centred on a Grade II Georgian house set in 24 acres of grounds at the edge of a Somerset village. Near to the M5 (four miles to Junction 22). A cluster of purpose-built brick buildings around an early 19th century Grade II listed house.

### Aims and philosophy

To provide a full and broad education in a caring, supportive and developmental environment. Our Ofsted reports confirm that this aim is achieved by the College and state that GCSE results are 'outstanding'.

### Staff qualification and selection

We select trained and experienced teachers who are specialists in their subject area. Half of our teaching staff have undergone specialist courses in teaching students with SpLD. All new appointments are CRB checked. Mark College has an international reputation for its educational work with dyslexic students. DfE approved, CRSTeD Specialist Provision. Ofsted grades of Good for Education and Good for Care 2011.

## I CAN's Meath School

**Brox Road, Ottershaw, Surrey KT16 0LF**

**Tel: 01932 872302 Fax: 01932 875180**

**Email: [icancentremearth@ican.org.uk](mailto:icancentremearth@ican.org.uk)**

**Established: 1982**

**Status: Non-maintained**

**DfE Reg No: 936/7063**

**Number on Roll: 53**

**Type of School: Co-educational –  
boarding and day**

**Teaching Staff: 6.5 fte**

**Residential Care Staff: 5**

**Learning Support Assistants: 10**

**Therapists: 9**

**Length of School Year: 39 weeks**

**Fees: Reviewed on a case-by-case basis**

### Special needs catered for

Meath School is a non-maintained day and residential primary special school in Surrey for up to 75 pupils aged 4+ to 11 years, who have severe and complex speech, language and communication needs, including Asperger's Syndrome. Children with additional or associated difficulties including some degree of learning difficulty, attention control, fine and gross motor co-ordination problems, mild visual or hearing impairments and social interaction problems may also benefit from provision.

### Specialist facilities

The school offers specialist practice and programmes (e.g. signing environment, Cued Articulation, Alternative and Augmentative Communication, visual supports) to enable full access to differentiated National Curriculum teaching via a termly topic approach. Each class (average ten children) has an allocated teacher, speech and language therapist and at least one learning support assistant. An occupational therapist and occupational therapy assistant support individual children, class activities and school-wide motor skills groups and sensory integration sessions. All staff are professionally qualified and experienced. Ofsted inspectors commented that: *"It delivers outstanding care, support and guidance, pupils feel secure and this helps them to achieve well."*

### Support services provided

An activity and life skills programme is offered in the residential setting by the residential child care staff where agreed joint approaches to communication, learning and behaviour are reinforced by a 24-hour curriculum. Strong partnerships with parents/carers are vital to the success of pupils, and families are encouraged to make observation visits to the school and to contribute to their child's IEP targets. The school has a family liaison worker (a qualified social worker) who can work with parents/carers in the home context. The School also offers consultancy services, training, inreach/outreach packages, and flexible placements on request from LAs or schools. Multi disciplinary independent specialist assessments can also be purchased by families, professionals and/or LAs.

### General environment

Meath School is housed in fine Victorian buildings and the seven-acre site includes a modern teaching block, ICT suite, small swimming pool, school field, activity play areas and woodland. It is situated in the village of Ottershaw, near Woking and residential children are supported when attending local community activities. The School has a programme of after school activities and a holiday club for all pupils.

### Aims and philosophy

Staff have developed a number of professional links with local mainstream and special schools, and this is enhanced via inclusion programmes for individual children. Meath School is run by I CAN, the children's communication charity. (Registered Charity No: 210031).

**For further information contact: I CAN, 8 Wakley Street, London EC1V 7QE.**

**Tel: 0845 225 4071 Fax: 0845 225 4072**

**Email: [info@ican.org.uk](mailto:info@ican.org.uk) Website: [www.ican.org.uk](http://www.ican.org.uk) or [www.talkingpoint.org.uk](http://www.talkingpoint.org.uk)**

**Fenny Lane, Meldreth, Royston Herts SG8 6LG****Tel: 01763 268000 Fax: 01763 268099**Email: [meldreth.manor@scope.org.uk](mailto:meldreth.manor@scope.org.uk) Website: [www.scope.org.uk](http://www.scope.org.uk)**Established: 1966****Principal: Roger Gale****Status: Independent (Scope)****DfE Approved No: 873/6008****Number on Roll: 32 (6-19 School;  
9-19 Children's Home)****Type of School: Mixed – Co-educational –****Residential (52 weeks, termly, weekly) and day****Total Staff: 150 working in interdisciplinary teams****Length of School Year: 38 weeks****(Children's Home 52 weeks)****Fees: Please contact school for fees**

### Special needs catered for

Physically disabled children and young people with severe or profound and multiple learning difficulties. The school has particular expertise with those who have cerebral palsy (or an associated impairment), and complex additional support needs. These may include epilepsy, communication difficulties, enteral feeding, asthma, postural management, visual and/or hearing impairment.

### Specialist facilities

The teaching and residential accommodation has been newly refurbished in the last two years. Resources include well-equipped classrooms and specialist teaching areas, a multi-sensory room, multimedia suite, food technology room, hydrotherapy pool and rebound therapy.

### Education

Students are grouped appropriately in class groups according to need, on the basis of an individual multidisciplinary assessment framework. The school provides a person-centred, themed curriculum linked to individual care support and education plans.

### Support services provided

Each student has a comprehensive individual care plan and programme, supported by a multidisciplinary key team which includes teachers and learning support assistants, social care staff, nurses, physiotherapists, speech and language therapists and an occupational therapist.

### Residential care

Boarders live in flats of up to ten young people, and are supported by an experienced team of care support and nursing staff across the 24 hour period. The flats are self-contained and provide a homely, stimulating and supportive environment, in which students are encouraged to participate as fully as possible in all aspects of daily living, including social and leisure opportunities.

### Home school links

The school has an 'open door' policy for family members and on-site accommodation is available for families to stay. They are encouraged to visit, phone or email, and students are supported to maintain regular contact.

### General environment

The extensive grounds are used for leisure and physical management programmes, and include the 'Learning Curves' outdoor play area and access to an adjacent indoor riding school. The site is shared with Orchard Manor, an innovative 52-week transition service for disabled young people aged 18-25 with complex additional support needs.

### Aims and philosophy/Our approach

The school integrates education and therapy in ways that promote the self esteem and personal autonomy of children and young people who are physically disabled and have profound and complex learning difficulties. Particular emphasis is placed on pupil communication, choice-making and participation, and the key principle is one of promoting dignity, courtesy and respect.

### Staff qualification and selection

All staff and volunteers are subject to pre-employment checks including CRB at an enhanced level. Staff are appropriately qualified, including teachers, therapists and nurses. Residential care staff are expected to achieve NVQ Level 3. There is induction to meet national standards and an ongoing training and staff development programme. Core mandatory training includes safeguarding and protection, equality and diversity and health and safety.

## North Hill House – Priory Education Services

Fromefield, Frome, Somerset BA11 2AB

Tel: 01373 466222 Email: northhillhouse@priorygroup.com

Website: www.priorygroup.com/education

**Principal:** Ms Sharon Edney

**Status:** Independent Special School

**Age Range:** 7-18

**Length of School Year:** 38 weeks

**Type of School:** Boys – Residential and day

**Fees:** Available on request

**Number of Places:** 62

### Special needs catered for

Specialist education for young people aged 7-18 with Asperger's Syndrome and associated disorders. The school is specifically designed to allow students to thrive effectively within an ever demanding and complex society. This is achieved by developing personalised, predictable routines with high levels of individual support.

### Specialist facilities

A broad, balanced and differentiated curriculum, including a modified National Curriculum, relevant to the needs of pupils with autistic spectrum disorders (ASD). We use teaching, residential and leisure situations as learning opportunities.

### Support services provided

All students have a dedicated key worker to personally support every young person and to link between parents and school. Small class sizes (max eight) all with dedicated learning support assistants. Post 16 facilities with opportunities to study locally within mainstream settings.

### Education

Pupils have individual educational plans (IEP's) tailored to meet their specific needs and designed to maximise their strengths and ambitions. Pupils can study a broad range of subjects and work towards nationally accredited qualifications including GCSE's and A Levels. ICT plays an important part in education and includes digital photography and video editing. All students have one-to-one PC access, filtered broadband access and email facilities.

### General environment

The residential facilities are organised into small family units comprising of mostly single bedrooms, all with en-suite facilities, clustered around spacious friendly lounges. North Hill House is ideally situated within walking distance of Frome town centre, offering real experiences for pupils to practise social skills within authentic settings.

### Aims and philosophy

Our aim is to provide a stimulating educational environment where pupils can develop a responsible, positive outlook and a sense of personal achievement. Our objectives are clear: to provide young people with confidence and an understanding of the social world in which they function and to facilitate the highest possible educational attainments during their school career.

**Hallgate, Astley Village, Chorley, Lancashire PR7 1XA**  
**Telephone: 01257 220011 Email: [oliverhouse@priorygroup.com](mailto:oliverhouse@priorygroup.com)**  
**Website: [www.priorygroup.com/education](http://www.priorygroup.com/education)**

**Principal: Wendy Sparling**  
**Status: Independent Special School**  
**DfE Registered No: S342/6004**  
**Age Range: 6-19**  
**Number of Places: 40**

**Type of School: Co-educational, residential and day**  
**Length of School Year: Up to 52 weeks**  
**Fees: Available on request**

### **Special needs catered for**

Boys and girls aged 6 -19 with moderate to severe autistic spectrum disorders and associated learning difficulties. In addition, children may also have challenging behaviour as a result of their difficulties and a lack of social understanding.

### **Specialist facilities**

Oliver House School is a spacious and modern building that has been specifically designed to accommodate young people with autistic spectrum disorders. Classrooms have been planned and designed for specialist subjects and resources include interactive multi-sensory areas, a gym area with soft play facilities and specialised therapy equipment for rebound and sensory integration therapy. The rural and community environment plays an important part in the holistic experience for our young people. Set next to the idyllic Astley Park students are able to freely and safely engage within the natural environment.

### **Support services provided**

Students have access to a range of therapies including speech and language and occupational therapy to facilitate the development of functional communication skills. Alternative and augmentative communication systems are used to involve objects of reference, photographs, symbols, signing, picture exchange and picture pointing.

### **Education**

Oliver House adopts a multidisciplinary approach to education using the best practice including models such as TEACCH and active learning programmes. Students learn how to develop effective learning strategies to overcome their difficulties in social and emotional processing, communication and flexibility in thinking and behaviour. All students have access to the National Curriculum, which is adapted and modified according to the individual needs and abilities of each student. Teaching groups have high levels of support with small groups of up to six students, to ensure that learning support is appropriate for each individual.

### **Residential care**

The whole school curriculum is continued in the residential setting in order to emphasise the development of appropriate social behaviours and personal skills. By using a variety of community-based environments we offer our children and young people additional opportunities to practice and rehearse these vital skills in real life settings. Children and young people live in small groups in houses in close proximity to the school. All houses provide a welcoming and homely environment and include lounges, quiet rooms and single bedrooms, most with en-suite facilities.

## Penn School

Church Road, Penn, High Wycombe, Bucks HP10 8LZ

Tel: 01494 812139 Fax: 01494 811400

Email: [office@pennschool.bucks.sch.uk](mailto:office@pennschool.bucks.sch.uk) Website: [www.pennschool.bucks.sch.uk](http://www.pennschool.bucks.sch.uk)

**Established:** 1921

**Head Teacher:** Mary-Nest Richardson

**DfE Reg No:** 825 7001

**Age Range:** Secondary + Post-16

**Type of School:** Weekly – Boarding/Day

**Length of School Year:** 38 weeks

**Fees:** On application

### Special needs catered for

Children of secondary school age whose primary difficulty is Speech & Language Difficulties, Autistic Spectrum Disorders and/or Hearing Impairment and whose non-verbal ability falls within the average, or below average range. Children with additional difficulties, including motor difficulties or social interaction problems will also benefit from the provision. Post-16 provision with emphasis on work-related learning and life skills and links with colleges. Accreditation at Entry Level, ASDAN and some GCSEs.

### Specialist facilities

Specialist teachers of the deaf and of pupils with Speech & Language Difficulties and ASD, together with an experienced team of learning support staff and residential care staff provide a stimulating and caring environment. Radio aids, Total Communication using Signed English and a lift for physically disabled pupils. All windows are UV filtered to cater for light-sensitive children.

### Support services provided

Speech therapy, physiotherapy, audiology, Occupational Therapy, Cranial Osteopathy and nursing care is available.

### Home school links

The school operates on an open door policy and welcomes family visits. LEA visitors are always welcome to see the work of the school and are encouraged to attend Annual Reviews and Parents' Evenings.

### General environment

The school is in the beautiful village of Penn in the Chiltern Hills near to Beaconsfield in Buckinghamshire. There are excellent road connections to the M40 and M25 and easy access to London by rail. The school has well maintained grounds with plenty of recreational space, good hard areas and playing fields.

### Aims and philosophy

We believe that happy children learn. We provide a caring but challenging environment where pupils are encouraged to establish themselves as individuals – develop self-esteem and experience real independence. We specialise in helping children who find communicating and learning difficult. Every avenue is used to establish and develop good communicating skills in all our pupils.

### Staff qualification and selection

Staff are selected by the Governing Body and are screened to ensure their suitability for working in a residential/day school. Staff have excellent qualifications and there is ongoing staff development to meet the special needs of the pupils here at Penn.

### The Rayners Special Educational Trust

The Rayners Special Educational Trust is responsible for the maintenance of Penn School. They operate the school as a non-maintained Special School.

## Pontville School – Part of the Witherslack Group

P

Black Moss Lane, Ormskirk, Lancashire L39 4TW

Tel: 01695 578734 Fax: 01695 579224

Email: [office@pontville.co.uk](mailto:office@pontville.co.uk) Website: [www.pontville.co.uk](http://www.pontville.co.uk)

**Head Teacher:** Iain E Sim MEd BSc ToD

**Age Range:** 5-19

**Status:** Independent

**Type of School:** Co-educational Day and 38

**Week Residential School. 52 week residential accommodation is available at the sister establishment – Witherslack Care**

**Fees:** Available upon request

**Number of Places:** 90 (full boarding)

5; (weekly boarding) 15; girls 6; boys 61

### Special needs catered for

The school caters for young people who experience difficulties in developing social communication skills such as ASD, Asperger's Syndrome and specific speech and language difficulties. These conditions may well be compounded by general learning difficulties or secondary issues such as social problems, attachment and attentional issues.

### Specialist facilities

The full National Curriculum is offered through uniquely modified schemes of work delivered by specialist teachers in specialised accommodation. The school has specifically resourced areas for ICT, Science, Home Economics, Physical Education, Vocational Subjects and Functional Skills. Pontville also has a College Unit offering a vocational curriculum for students aged 14-19. Courses include basic education, social and life skills, woodwork, construction, catering, vehicle maintenance, animal husbandry, horticultural studies and IT. Accreditation includes Entry Level Certification, NVQ and BTEC.

### Support services provided

All young people at the school have a keyworker. This is a personally identified member of staff who works with the young person on individual targets and programmes. The school places an emphasis on the development of social communication skills across its curriculum. It provides highly differentiated schemes of work for pupils with communication deficit and associated complex needs. It also provides additional therapy input in Speech and Language, Educational Psychology, Occupational Therapy, Music and Play, based on identified need. Links to mainstream schools and colleges are supported by specialist staff.

### Home school links

Parents are welcome and are encouraged to attend school events. Home visits by the Pastoral Care Manager and other contacts are arranged to help develop a mutually supportive link. Parental workshops are delivered to support young people at home.

### General environment

The school is located in the historic market town of Ormskirk in Lancashire. This gives the school excellent links for activities during the day and the evening, enabling us to integrate and include our young people into the wider community.

### Aims and philosophy

Pontville School is rated as Outstanding in all areas of its provision by Ofsted (2009). The School has a long and successful history of providing support for children with special educational needs. Accreditation includes Life Skills Certification, Entry Level Awards and GCSE's.

### Staff qualification and selection

All staff are recruited through a high quality selection procedure and their suitability checked through the Criminal Records Bureau at Enhanced Level.

## Potterspury Lodge School

Towcester, Northamptonshire NN12 7LL

Telephone: 01908 542912 Fax: 01908 543399

Email: mail@potterspurylodge.co.uk Website: www.potterspurylodge.co.uk

**Established:** 1956

**Principal:** Mr John W D Brown

**Status:** Independent DFE Registered

**Charity No:** 1103356

**DFE Registered No:** 928/6039

**Age Range:** 8-18

**Number on Roll:** 64

**Type of School:** Boys – Full Boarding,

**Weekly Boarding, Flexible Boarding and Day**

**Teaching Staff:** 11.5

**Learning Support Staff:** 11

**Residential Care Staff:** 9

**Length of School Year:** 38 weeks

**Fees:** Apply to school

### Special needs catered for

Higher achieving Autistic Spectrum Disorders and Asperger's Syndrome; Emotional and Behavioural Difficulties and associated learning difficulties.

### Specialist facilities

A safe, structured and caring environment; purpose-built classrooms and small teaching groups, large sports hall, tennis court, basket ball court, skate park, playing field, adventure playground and fishing lake. Well-equipped Science Lab, Home Economics room, Pottery, ICT room and Music room. Modern living accommodation in small units and opportunities for a wide range of outdoor pursuits, class-based and evening activities, at home and abroad. The Stables Further Education Centre provides for students aged 16-18 years. Education and Residential support managers enable students to follow programmes of education and training according to their needs, offering individual programmes of learning, including extended functional skills in English, Maths and ICT; personal learning and thinking skills, additional or specialist learning, project work and regular extended work experience.

### Support services provided

We employ the services of an Educational Psychologist, Child Psychiatrist, Speech and Language Therapist and Occupational Therapist. We can also negotiate the provision of other services, such as counselling where appropriate therapy where approved.

### Home school links

Parents and families are always welcome and practical encouragement is given to visit for Open Days, Parents Evenings, Festivals and annual reviews.

### General environment

A 17th century listed building set in 22 acres of unspoiled grounds with a lake and large fruit and vegetable gardens. New buildings have been added and old buildings modernised to a high standard. The school is situated half a mile off the A5 between Towcester and Stony Stratford.

### Aims and philosophy

Potterspury Lodge School exists to provide pupils with Special Educational Needs with a wide range of opportunities to experience success. These are designed to help them progress towards being better integrated into society and then go on to meet the demands of independent adult life. We continue to be influenced by the principles of Rudolf Steiner; celebration of seasonal Festivals are very much part of the school's structure, as is the importance given to creativity. The curriculum provision includes the National Curriculum, children are taught in groups of about eight, or fewer for practical subjects and a range of examination courses are available in most subjects. All students study English, Maths, Science, Information Technology, Art, Citizenship, Geography, History, Health Education, Food Technology, P.E., Religion, Social Skills and Music. A vocational and life-skills programme including independent living experience is also in place for students in years 10 and 11, and extended work-based training can be negotiated where appropriate. Careers guidance and education is provided from year 9, including work experience in years 10 and 11 and we have links with local colleges and mainstream schools. We have a qualified careers co-ordinator who works closely with Personal Advisers from our local Connexions Service.

### Staff qualification and selection

Staff are carefully selected in line with the requirements of Safeguarding Children and once appointed take part in an ongoing programme of in-service training. Staff are fully qualified and appropriately experienced and new staff who do not hold professional qualifications are required to work towards gaining them and are supported to enable them to achieve this.

**Hermitage, Thatcham, Berkshire RG18 9NU****Tel: 01635 247202 Fax: 01635 247203****Email: mail@priorscourt.org.uk Website: www.priorscourt.org.uk****Established: 1999****Principal: Stephen Bajdada-Brown****DFE Reg No: 869/6014****Status: Independent****Age Range: 5-19****Type of School: Mixed – Day, weekly and termly places****Length of School Year: 38, 44 and 52 weeks****Teaching Staff: 2:1, 1:1, 1:2****Fees: On request****Number on Roll: 54****Admissions: Regular open days****Visits by arrangement****Special needs catered for**

Autism with mild, moderate and severe learning difficulties. Complex and additional needs including epilepsy, ADHD, OCD and challenging behaviours. National and international catchment area.

**Aims**

To provide students with the necessary skills to enable them to maximise their potential and lead full and varied lives as independently and inclusively as possible.

**Approach**

Best practice from well-validated, complementary approaches (including TEACCH, Daily Life Therapy) carefully moulded to suit students' specific needs. Focus on structured teaching, physical exercise and managing challenging behaviour, developing independence, personal care, life, social, communication and choice-making skills within a structured environment. Individualised 24-hour programme of learning for each student, with group and individual activities, structured throughout their waking day with consistent learning objectives across education and residential settings providing the opportunity to develop sleeping, eating and toileting patterns, independent living skills, build communication and focus on academic, vocational and physical activities. Skills are generalised and transferable, through appropriate planning, in the home, local community and future placements.

**Specialist facilities**

The school provides a secure and welcoming environment with exceptional facilities. The strong focus on physical activity is supported by a gymnasium, sensory swimming pool, trampolines, outdoor gym, all weather activity track for walking, running and cycling, adventure playground, zip wire, trim-trail and swings – all within around fifty acres of beautiful grounds. A greenhouse, polytunnel and walled kitchen garden for horticultural projects by the students. A Countryside Learning Centre with an outside classroom, stable yard and small paddocks within the grounds build vocational skills, including animal care and are used for Animal Assisted Intervention. A well-equipped Education block houses Speech & Language, Music and Occupational therapy, Psychology department, sensory room, soft play, library, food technology and independent living skills suite, ICT suite and medical department. A separate block for the 14-19 curriculum where independence and vocational skills are developed with woodworking & pottery facilities, ICT suite, kitchen area, workrooms, classroom and student-run tuck shop. Autistic-specific, homely and well equipped residential facilities with an off-site house for older students offering greater independence and inclusion in the local community.

**Staff – an interdisciplinary approach**

High staff: student ratio. On-site Occupational, Music and Speech and Language therapists, nurses, Clinical Psychologists, Animal Assisted Intervention, Swimming, Horticultural and ICT instructors and Family Liaison Co-ordinator support the core team of experienced, well-trained staff. All work together with parents to achieve a consistent, co-ordinated approach. On-site qualified TEACCH, Signalong and Elklan trainers.

**Autism services and training**

Prior's Court Young Adult Provision – 52 week supportive living and learning for young adults with autism from 16-25 years. Prior's Court Training & Development Centre - specialist autism and communication training and conferences for professionals and parents.

## Priory Fostering Services – Priory Education Services

The Dairy House, 1 Mathon Place, Mathon, Worcestershire  
 WR13 5NZ Tel: 01684 560333 Email: [fostering@priorygroup.com](mailto:fostering@priorygroup.com)  
 Website: [www.priorygroup.com/fostering](http://www.priorygroup.com/fostering)

**Manager:** Tony Brooks  
**Age Range:** 0-18

**Regions:** Herefordshire, Worcestershire,  
 Gloucestershire, West Midlands and the South West

### Special needs catered for

Priory Fostering Services provides quality, stable foster placements for children and adolescents aged 0 to 18, with emotional and behavioural difficulties.

### Specialist fostering services

Priory Fostering Services is part of the Priory Group which is the UK's leading independent provider of specialist mental health, care and education services. Priory Fostering Services provides long-term, short-term and respite placements for looked after children. Foster children and young people are aged from 0 to 18 years, many of whom have emotional and behavioural difficulties which can place great demands on those caring for them.

### Approach to foster care

Our approach to foster care puts the child's interests at the centre of everything we do to promote social, emotional and educational development for all of our children and young people.

### Specialist areas

Priory Fostering Services provides quality, stable placements and specialises in placements for adolescents with emotional and behavioural difficulties. We also offer mother and baby placements, special needs and sibling group placements and placements for unaccompanied asylum seeking children. Priory Fostering Services is currently the preferred supplier for over 30 local authorities based mostly in the West Midlands, Wales and the South West of England.

### Aims and philosophy

Our aim is to provide stability so that children and young people in our care can achieve their full potential and are able to successfully manage the challenges that adulthood may bring.

## The Priory Lodge School – Priory Education Services

P

**Priory Lane, London SW15 5JJ Tel: 0208 392 4410**  
**Email: [thepriorylodeschool@priorygroup.com](mailto:thepriorylodeschool@priorygroup.com)**  
**Website: [www.priorygroup.com/education](http://www.priorygroup.com/education)**

**Principle: David Curry**

**Type of School: Co-educational Day**

**Status: Special Independent School**

**Age range: 7-19**

**Fees per annum: On request**

**Number of Places: 40**

### Special needs catered for

The Priory Lodge School is a specialist, purpose-built day school in South West London for young with mild to moderate autism, Asperger's Syndrome and associated learning difficulties. The Priory Lodge School aims to deliver the highest level of education and care according to individual need in a safe, positive and structured environment in which every student is encouraged to achieve the best possible academic, social and vocational outcomes.

### Our aim

Our aim is to bring about the best in every student to enable them to receive a positive educational experience and to progress according to their own individual skills and abilities. We offer a whole school approach to the curriculum. This provides structure and routine, a modified environment and learning processes, experienced and qualified staff and development in independence training, self-help, communication, social and leisure skills. Close family communication is encouraged to promote consistency in each young person's personal development.

### Education

The Priory Lodge School adopts a multidisciplinary approach to education using the best practice models such as TEACCH and active learning programmes. Students will learn how to develop effective compensatory strategies to overcome their difficulties in social and emotional processing, communication and flexibility in thinking and behaviour. All students have access to the National Curriculum, which is adapted and modified according to the individual needs and abilities of each student. Individual education plans (IEPs) are implemented to develop communication, personal and social education skills.

### Environment and facilities

The Priory Lodge School is situated in the grounds of the Priory Hospital Roehampton, in new, purpose-built premises close to Richmond Park and only seven miles from Central London, allowing easy access from the A3, M2, M4, M25 and M40. Classrooms have been designed for specialist subjects including information technology, art, food technology, science and music, together with specially designed areas for therapy and time-out rooms. Set within the hospital grounds in the heart of Richmond, students have access to a wide range of activities and facilities including outdoor adventure, physical education, environmental, cultural and social. This provides students with the opportunity to gain a real-life learning experience, helping them make sense of the world they live in supported by the National Curriculum.

The urban environment of the Priory Lodge School plays an important part in the holistic experience of our young people. It is also uniquely placed to benefit from the breadth of therapy and specialist mental health services provided at the Priory Hospital Roehampton, whilst also working with the CAMHS unit and experienced educational psychologists.

**Callow Hills Farm, Ledbury, Herefordshire HR8 2PZ****Tel: 01531 670 632 Email: queenswoodschool@priorygroup.com****Website: www.priorygroup.com/education****Principal: James Imber****Status: Independent Special School  
and Registered Children's Home****Number of Places: 20****Age Range: 11-19****Type of School: Co-educational –  
Residential and day****Length of School Year: 52 weeks****Fees: Available on request**

### Special needs catered for

Queenswood is a specialist school for young people with behavioural, emotional and social difficulties and complex needs. Many pupils will have experienced significant disruption in their schooling including exclusion from mainstream school and may have been out of school for long periods of time. Typically pupils will have a Statement of Special Educational Need and may be looked after by the local authority. Many have experienced multiple placement breakdowns.

### Specialist facilities

The school meets the needs of pupils at Key Stages 3 and 4 and operates on a 38-week basis. Day pupils from the local area are accepted at the school for normal school terms and residential placements in the children's homes are flexible for up to 52 weeks of the year depending on need. The curriculum is broad, balanced, relevant and differentiated to meet individual pupil needs. Fostering services are also provided within the Priory Group for young people aged 0-18.

### Support services provided

Each pupil has an individual integrated education and care plan to meet their specific needs. Behavioural Assessments and individual development plans are delivered by an assistant psychologist, chartered educational psychologist and child & adolescent psychotherapist as external consultants, and there is also access to music therapy, community psychiatric nurse, psychiatrist and psychiatric assessments. On admission, assessment is in accordance with a young person's care, education and pathway plan, governed by the Every Child Matters framework. Assessment is ongoing and regularly reviewed with all parties concerned.

### Residential care

In one of six children's homes within the surrounding area. Houses are for up to six people. Each young person has individually tailored Care and Behaviour Management programmes that address their self-care, health, emotional and behavioural needs and ensure that they are given the best possible chance of success.

### Education

With encouragement and support we reintroduce young people to education offering a broad, relevant and differentiated curriculum based on the National Curriculum and adapted where required to meet individual needs. Learning is in small, age appropriate groups of three or four pupils and one-to-one tuition is available to provide focus for those that require additional support.

### Aims and philosophy

To enable pupils to acknowledge and cope with their specific learning and behavioural difficulties and, through the provision of appropriate and high quality education, assist them in fulfilling their potential.

**Special  
SCHOOLS**  
**IN BRITAIN**  
2007 - 2008  
£10.00

The number one source of reference to the skills, services and expertise offered by special schools, further education and continuing care centres

[www.specialneedsuk.org](http://www.specialneedsuk.org)

The dedicated website for parents and professionals interested in special needs

**Special  
SCHOOLS**  
**IN BRITAIN**  
2008 - 2009  
£10.00

The number one source of reference to the skills, services and expertise offered by special schools, further education and continuing care centres

[www.specialneedsuk.org](http://www.specialneedsuk.org)

The dedicated website for parents and professionals interested in special needs

*To order back-copies of Special Schools in Britain please contact Julie O'Rourke on 01527 834465*

**Special  
SCHOOLS**  
**IN BRITAIN**  
2009 - 2010  
£10.00

The number one source of reference to the skills, services and expertise offered by special schools, further education and continuing care centres

[www.specialneedsuk.org](http://www.specialneedsuk.org)

The dedicated website for parents and professionals interested in special needs

**Special  
SCHOOLS**  
**IN BRITAIN**  
2010-2011

[www.specialneedsuk.org](http://www.specialneedsuk.org)

The dedicated website for parents and professionals interested in special needs

The number one source of reference to the skills, services and expertise offered by special schools and further education centres

£10.00



## Rossendale School – Priory Education Services

R

**Bamford Road, Ramsbottom, Lancashire BL0 0RT**  
**Tel: 01706 822779 Email: rossendale@priorygroup.com**  
**Website: www.priorygroup.com/education**

**Principal: Mr David Duncan**  
**Head of Education: Mrs Liz Duncan**  
**Status: Independent Special School**  
**Age Range: 8-16**

**Type of School: Co-educational –**  
**Day and weekly boarding**  
**Length of School Year: 38 weeks**  
**Fees: Available on request**  
**Number of Places: 68**

### Special needs catered for

Rossendale School provides specialist education for children with behavioural, emotional and social difficulties and associated conditions, many of whom are on the autistic spectrum.

### Specialist facilities

Teaching methods vary dependent upon class group and individual need. Individual support and counselling is provided thorough an extensive key worker system. We define therapy as the management of change where all aspects of life, both residential and day, are geared towards bringing about positive change.

### Support services provided

Each pupil has an individual education and care plan to meet their specific needs. Pupils on the autistic spectrum are integrated into age appropriate classes and taught with peers whose levels of attainment are within a similar band. Whilst not all pupils in that group may be diagnosed as having an autistic spectrum disorder, they will be diagnosed as having an emotional disorder and respond to the same stability, security, consistency and support from which pupils on the autistic spectrum benefit.

### General environment

Residential settings provide a warm and caring environment, as well as structure and security, offering opportunities for learning and personal development.

### Education

We provide a broad, balanced, relevant and differentiated curriculum aimed at meeting individual needs. We employ specialist subject teachers with a background of teaching their subject specialism to GCSE level in a mainstream school, and special support assistants whose main task is to meet individual needs.

### Home school links

Rossendale School believes in the principle of family involvement and a supportive partnership with families in the shared care of their children who attend the school. Home visits are part of a supportive network of care for our pupils and parents.

### Aims and philosophy

We believe that ALL pupils are entitled to a positive education which allows them to experience success. We aim to bring about positive change by enabling pupils to understand their difficulties and learn how to manage them.

**Awarded 'Outstanding' school by OFSTED for the past three years.**

## Royal School for the Deaf Derby

Ashbourne Road, Derby DE22 3BH

Telephone: (voice/text) 01332 362512 Fax: 01332 299708

Email: [principal@rsdd.org.uk](mailto:principal@rsdd.org.uk) Website: [www.rsd-derby.org.uk](http://www.rsd-derby.org.uk)

**Established:** 1893

**Principal:** Cheryl Ford – BA, BPhil

**Status:** Non-maintained

**DfE Registered No:** 831/7023

**Age Range:** 3-19

**Number on Roll:** 132

**Type of School:** Mixed – Day/Weekly Boarding

**Teaching Staff:** 31

**Residential Care Staff:** 19

**Special Needs Support Staff:** 33

**Length of School Year:** 38 weeks

**Fees:** £33,474 boarding/£21,696 day

### Special needs catered for

The school provides day and residential education for deaf pupils in an environment which celebrates British Sign Language as well as written and spoken English. Pupils with additional mobility needs can usually be accommodated.

### Specialist facilities

The National Curriculum is followed throughout the school and is adapted to suit the needs of pupils through personalised learning programmes. Examinations offered include GCSE, DIDA and Entry Levels. Post-16 students follow individual programmes of study at mainstream colleges with courses ranging from vocational options through to A levels and Level 3 BTEC National.

### Support services provided

Deaf staff support pupils in the natural acquisition of British Sign Language. Speech and language therapists can support pupils individually or in small class-based groups. The school audiologist operates from a modern, well-equipped suite. Medical services are provided by the school's own nurse and the local practice surgery.

### Home school links

Parents attend many events on the school calendar and are always welcome to visit the school. Reports, reviews and the tutorial system keep parents informed of their child's progress at all stages. Two elected parent representatives sit on the school's Board of Governors. Parents seeking to start or improve their sign language skills can be provided with free tuition.

### General environment

The pleasant, self-contained campus is situated on the outskirts of Derby. Residential pupils are grouped on campus in small units designed to promote a feeling of belonging and security while living away from home. The school has excellent facilities for sport and strong links with an outdoor centre based in the Peak District.

### Aims and philosophy

RSD Derby is a signing and speaking community which values the languages and cultures of both deaf and hearing people. Pupils with a strong and supported first language expand their reasoning, social and expressive capacities.

## Rugeley Horizon School – Priory Education Services

**R**

**Blithbury Road, Blithbury, Rugeley, Staffordshire WS15 3JQ**

**Tel: 01889 504 400**

**Email: [rugeleyhorizon@priorygroup.com](mailto:rugeleyhorizon@priorygroup.com) Website: [www.priorygroup.com/education](http://www.priorygroup.com/education)**

**Principal: Joan Pearson**

**Status: Independent Special School**

**Age range: 5-19**

**Number of Places: 48**

**Type of school: Co-educational, residential and day**

**Length of School Year: Up to 52 weeks**

**Fees: Available on request**

### Special needs catered for

Specialist education for young people aged 5-19 who are on the autistic spectrum and who exhibit moderate to severe learning difficulties. Emphasis is placed on physical education which allows pupils to develop both the mental and physical composure needed to access the whole school curriculum.

### Specialist facilities

Pupils are encouraged to learn through an active approach to learning with the focus on developing physical fitness, body co-ordination and emotional stability. The educational curriculum is divided into three main areas: physical education, expressive arts and academics. Classrooms are spacious and modern with specialist facilities for music, art and food technology.

### Support services provided

The whole curriculum is underpinned by a specialist support for learning team, comprising of a specialist educational needs co-ordinator (SENCO), and speech and language therapists to support pupils with their communication skills, both in school and in the residences.

### Education

Access to the National Curriculum is at an individually appropriate level with specialist teaching available for art, music, drama and physical education. The 14-19 curriculum includes accredited award programmes including ASDAN, AQA and OCR entry level, vocational studies and access to local college courses and work experience.

### Residential care

Rugeley Horizon School provides a comfortable, stimulating and safe environment, specifically designed for young people with an autistic spectrum disorder. It offers access to the wider community and fosters an atmosphere where young people have the benefits of socialising with others, making friends and participating in activities according to their interests and abilities and accessing the wider community.

### Aims and philosophy

Pupils will achieve an enhanced degree of emotional stability through an active approach to learning, which reduces anxiety levels and enables them to access the curriculum. Pupils are able to engage in daily life with increased confidence, self-esteem, dignity and independence.

## The School for Profound Education

Formerly St Margaret's School

The Children's Trust, Tadworth Court, Tadworth, Surrey KT20 5RU

Telephone: 01737 365810 Fax: 01737 365819

Website: [www.thechildrenstrust.org.uk](http://www.thechildrenstrust.org.uk)

**Established:** 1985

**Head Teacher:** Mrs Jan Cunningham

**Status:** Non-maintained

**DfE Registered No:** 936/7069

**Age Range:** 5-25

**Type of School:** Mixed – Full/weekly boarding and day

**No. on Roll:** 44

**Teaching Staff:** 13

**Residential Care Staff:** 54

**Special Needs Support Staff:** 7-10

**NNEB Staff:** N/A

**Length of School Year:** 52 weeks

**Fees:** Available on application

### Special needs catered for

Profound, multiple learning difficulties, severe physical disabilities, sensory impairments and complex medical needs. Expertise in education of girls with Rett Syndrome and children with acquired brain injury.

### Specialist facilities

Separate educational, therapy and residential buildings. Multi-sensory, vibro-acoustic and soft play rooms. 24-hour curriculum of integrated education, therapy and care. Speech, Music, Occupational and Physio therapies. 48 and 52 week placements. Differentiated curriculum for further education.

### Support services provided

Doctors on-site during the day with Thames Doc back-up at night, regular support from Consultant Paediatrician, Consultant Orthopaedic Surgeon, Audiologist, Chiropodist, Dietician, Orthotist, Dentist, School Doctor, Nurse, Social Worker, Optometrist and Advisory Teachers for Visually and Hearing impaired.

### Home school links

Partnership with parents. Parents' evenings offering talks, workshops and demonstrations. Home/school links encouraged. Pupils may spend alternate weekends in school.

### Staff qualification and selection

Multi-disciplinary team working in both the school and residences. Appointment depends upon relevant experience and qualification. Three week induction for all staff. Regular in-house and external training for all staff. Well established system of staff supervision and appraisal.

### Aims and philosophy

The School for Profound Education aims to provide a safe, caring and organised environment in which each child's special needs can be met. The school offers extensive grounds and gardens, specialist play equipment and a nature trail.

*The Children's Trust is committed to protecting children and young people.*

# The Sheiling School

**S**

Horton Road, Ashley, Ringwood, Hants BH24 2EB  
Telephone: 01425 477488 Fax: 01425 479536

Email: [enquiries@sheilingschool.co.uk](mailto:enquiries@sheilingschool.co.uk) Website: [www.sheilingschool.co.uk](http://www.sheilingschool.co.uk)

**Established:** 1951

**Contact Point:** Admissions Co-ordinator

**Status:** Independent\*

**DfE Registered No:** 835/6004

**Age Range:** 6-16 & 16-19

**Number on Roll:** 46

**Type of School:** Mixed – Residential

**Day and weekly pupils**

**Teaching Staff:** 16

**Residential Care Staff:** 45

**Length of School Year:** 38 weeks

**Fees:** On application

**Association of Camphill Communities**

[www.camphill.org.uk](http://www.camphill.org.uk)

## Special needs catered for

Moderate to severe learning difficulties, additional emotional and behavioural problems, speech impairments, Down's Syndrome, epilepsy, autism, Fragile X, Williams Syndrome and other disabilities.

## Specialist facilities

Integrated home and school life in a community setting. Adapted Waldorf Curriculum (as applied in mainstream Rudolf Steiner schools) incorporating appropriate elements of the National Curriculum with additional therapies and crafts. Consideration of medical and therapeutic aspects as integral part of the care of each child.

## Support services provided

Purpose-built therapy centre providing speech and language therapy, music therapy, artistic therapy and curative eurhythmy. Arts, crafts and musical activities as integrated part of the curriculum.

## Home school links

The school works in partnership with parents and conducts regular parents' meetings and social days. Parents attend annual reviews. Parents committee and termly news updates.

## General environment

The school is situated close to the market town of Ringwood in the New Forest and within ten miles of the coast. It encompasses a 50 acre semi-rural site of fields, gardens and woodlands, with family sized houses, classrooms, multi-purpose hall, gym hall, swimming pool, therapy centre, workshops, a chapel and several multi-purpose play areas. Senior pupils [16-19 years] live separately from younger children in three houses, using their own classrooms and workshops but sharing other facilities. Some co-workers (staff) live within the community, others live locally.

## Aims and philosophy

The Sheiling School is a Camphill Community whose work and philosophy derive from the teachings of Rudolf Steiner. It is a therapeutic community providing a total environment in which children can be helped towards their full potential. This is enhanced by a rich social and cultural life focused in particular around the Christian festivals and by the opportunity to experience and participate in the natural cycle of the year.

## Staff qualification and selection

All co-workers are carefully selected and have appropriate experience. Some hold the Diploma in Curative Education and other qualifications.

\* Although independent, childrens fees are met through local authority funding.

Patrons: Baroness Cox, Lord Pearson of Rannoch, The Hon. Mary Pearson, Jonathan Dimbleby.

**Sheridan School** – Priory Education Services

Thetford Road, Northwold, Thetford, Norfolk IP26 SLQ

Tel: 01366 726040 Email: [sheridanschool@priorygroup.com](mailto:sheridanschool@priorygroup.com)Website: [www.priorygroup.com/education](http://www.priorygroup.com/education)**Type of School:** Co-educational**Length of School Year:** 38-52 weeks**Fees:** Available on request**Number of Places:** 35**Status:** Independent Special School**Age Range:** 10-19**Special needs catered for**

Autistic spectrum disorders with behavioural, emotional and social difficulties.

**Specialist facilities**

Sheridan School provides specialist education for boys and girls aged 10-19 who have social, emotional and behavioural difficulties with learning difficulties including autistic spectrum disorders. Many of the young people at Sheridan School may have experienced considerable disruption to their education as a result of their difficulties and may lack confidence in their own abilities. We aim to nurture and develop academic skills and self-belief through an integrated holistic approach centred on individual education, care and therapy. This is achieved through personalised multidisciplinary assessments and delivered through highly individual education and care programmes which are specific to each young person.

**Support services provided**

Our experienced multidisciplinary team carefully design individual placement plans to enhance self-esteem and provide opportunities to gain an increased sense of self-worth. Pupils have access to a range of professional therapies including: child and adolescent psychiatry; educational psychology; behavioural, art, speech & language, occupational and family therapies.

**Education**

Education is seen as an integral part of an individual's placement plan, with each young person being helped to experience success. Education is provided on-site in our purpose-built school. Small teaching groups allow for a high level of specialist support, and experienced special needs teachers provide a broad and balanced curriculum with a wide range of National Curriculum work related to individual needs.

**Aims and philosophy**

Sheridan School aims to realise the five outcomes defined in Every Child Matters: to be healthy; to stay safe; to enjoy and achieve; to make a positive contribution; to achieve economic wellbeing. We provide an integrated, professional programme of quality residential care and education, which will enable young people to make a successful transition into adulthood with an acceptable set of personal qualities and values, allowing them to participate positively in society.

**Manor Way, Burbage, Leicester LE10 3HT**  
**Tel: 01455 890023 Email: sketchleyhorizon@priorygroup.com**  
**Website: www.priorygroup.com/education**

**Status: Independent Special School**

**Age Range: 8-19**

**Number of Places: 25**

**Type of School: Co-educational –  
Day and extended day**

**Length of School Year: 38 weeks**

**Fees: Available on request**

## Special needs catered for

Specialist education for pupils aged 8-19 years with severe to mild autistic spectrum disorders (ASD) and associated difficulties. Children may also have moderate challenging behaviour as a result of their communication difficulties and their lack of social understanding.

## Specialist facilities

We adopt a multidisciplinary approach to education using the best practice from models such as TEACCH, PECS, active learning programmes and also draw on the expertise of those developed in other Priory schools. We take a child-centred approach and focus on the needs of each individual pupil to create a framework for learning which promotes self-confidence and self-esteem.

## Support services provided

Key worker for each child. Access to therapeutic support including psychiatrist, psychologist and speech & language therapist.

## Education

The curriculum is designed to provide rich learning experiences that reflect pupils' needs, abilities and interests. Pupils have access to the National Curriculum through materials such as the QCA and EQUALS units of work. Pupils learn in small, well-equipped classes of up to six and are grouped by Key Stage.

## Extended day

The school operates on an extended day basis and offers continuous education and care. There is a particular emphasis on independence and life skills training which takes place throughout the normal school day and can be extended until 8pm where required. The extended day will benefit pupils who require structure, routine and planned learning for more than the normal school day, and will include those who present particularly challenging behaviour, noticeably increased in the evenings when needing to occupy themselves and when routine is at a minimum. The additional support of the extended day will enable many children to live at home with their families, where a residential school may otherwise be the only option.

## Aims and philosophy

We aim to bring out the best in each child to enable them to live happy, functioning and meaningful lives. Within a safe, structured and predictable environment, pupils will develop the skills needed to live as independently as possible so they are able to enjoy their lives and make real life choices as they reach adulthood.

## St Elizabeth's School

South End, Much Hadham, Hertfordshire SG10 6EW

Telephone: 01279 844270 Fax: 01279 843903

Email: [school@stelizabeths.org.uk](mailto:school@stelizabeths.org.uk) Website: [www.stelizabeths.org.uk](http://www.stelizabeths.org.uk)

Established: 1st March 1904

School Principal: Brian Sainsbury --  
M.Ed. B.Ed (Hons) DPSE. Cert. Ed. NPQH

Status: Non-maintained

DfE Registered No: 909/7006

Age Range: 5-19+

No. on Roll: 66

Type of school: Mixed – Full boarding and day

Teaching Staff: 14

Residential Care Staff: 91

Special Needs Support Staff: 20 LSAs/  
2 Speech & Language Therapists/1 Speech  
& Language Therapy Assistant/1 Clinical  
Psychologist/1 MTU Assistant/  
1 Physiotherapist/1 Physiotherapy Assistant/  
1 Occupational Therapist/1 Occupational  
Therapy Assistant  
Length of School Year: 38 weeks  
Fees: £76,680-£127,536 (Boarding)  
£46,010-£76,521 (Day)

### Special needs catered for

Recognised by the DfE, St Elizabeth's School provides residential/day education for students aged 5-19+ with Epilepsy and related medical conditions, MLD, SLD, complex needs, Autism and communication difficulties.

### Specialist facilities

All buildings are single storey and fully ramped. Waking Night staff are supported by Waking RGN and senior staff, plus an electronic auditory monitoring system. We provide 24-hour nursing cover, comprehensive medical supervision, individually planned programmes within N.C. guidelines and a range of F.E. Link Courses with local colleges. A Multi-Therapy Unit was opened in 2002. Well-qualified Care Assistants support the pupils/students in homely residential units providing many leisure and off-site activities as well as social skills training. The school's post 16 students benefit from a new purpose-built Living and Learning Building (Opened in January 2007) where small groups of en-suite study bedrooms have been built around dedicated study facilities.

### Support services provided

The school provides an on-site service for Speech and Language Therapy, Physiotherapy, Occupational Therapy and Clinical Psychology. All teaching groups are very small and have the benefit of Learning Support Assistants which provides a high staff ratio.

### Home school links

Parental/family visits and weekends at home at parental request. Parents are free to visit St Elizabeth's at any time. They may telephone the school day or night, i.e. 24 hrs. There is a termly parents' day and an active parent forum who have representatives on the governing body.

### General environment

St Elizabeth's is situated in rural Hertfordshire, it is well accepted and supported by the local community. The buildings, new and adapted, are light and airy and are well furnished and equipped. Accommodation is available for families to use to maintain contact with, and to become involved in, their children's programmes. Excellent use is made of local leisure facilities.

### Aims and philosophy

St. Elizabeth's is administered by the Congregation of Daughters of the Cross Liege. It admits children of any or no denomination according to need. Its large multi-disciplinary team is committed to helping those children where epilepsy or other medical/social needs prevent them attending mainstream or day special schools. The school has amassed considerable expertise in the education of children with complex needs and autism spectrum disorder, and is able to provide a 24-hour structured programme.

### Staff qualification and selection

All staff are appointed by the Principal because of their qualifications, commitment and expertise.

# St Joseph's Specialist School & College

S

Amlets Lane, Cranleigh, Surrey GU6 7DH

Tel: 01483 272449 Fax: 01483 276003

Email: [office@st-josephscranleigh.surrey.sch.uk](mailto:office@st-josephscranleigh.surrey.sch.uk) Website: [www.st-josephscranleigh.surrey.sch.uk](http://www.st-josephscranleigh.surrey.sch.uk)

**Established:** 1950

**Head Teacher:** Mary Fawcett

**DfE Registration No:** 936/7011

**Age Range:** 5-14 + 14-19

**Number on Roll:** 78

**Type of School:** Mixed – Day/Boarding

**Teaching Staff:** FTE 18

**Care Staff:** 37

**Teaching Assistants:** 84

**Length of School Year:** 38 weeks

**Flexible boarding and respite**

**Fees:** On application

## Special needs catered for

The school provides day, weekly and termly residential education for learners who have moderate, complex and severe learning difficulties and ASD. The school has achieved Specialist School status in Communication and Interaction and has expert provision for learners with speech and language and communication difficulties. Initial contact may be made by families to Local Authority and Children's Services or the Connexions service leading to a schools-based assessment period.

## Support services provided

Services include speech and language therapy, occupational therapy, art therapy, physiotherapy, touch talk therapy and music therapy.

## Academic and leisure facilities

Learners from 5-14 attend a purpose-built school building which is both well resourced and equipped. Learners from 14-19 attend a separate suite of modern rooms designed to encourage a more mature working atmosphere. Residential accommodation for 5-14 pupils is in the main building whilst 14-19 learners and staff stay in self-contained houses situated both on and off the campus. Other facilities include a swimming pool, art room, pottery, children's adventure playground, indoor soft play area, sensory room, tennis court and extensive grounds with sports field, landscaped features, wooded areas and small wildlife ponds.

## Home school links

Learners and families are encouraged to maintain regular contact by telephone or letter. Communication between home and school is based on an open door policy in which contact between parents and staff is considered to be vital to maximising the well-being and progress of the child. Reporting to families is conducted through parents' meetings including IEP, Annual Review, open days and family focused workshops.

## Examinations/Accreditations offered

Learners have the opportunity to undertake nationally accredited courses, where appropriate, including ASDAN Awards, Equals 'Moving On', GCSE Art, AQA Unit Awards, Entry Level Maths, English, Drama and RE.

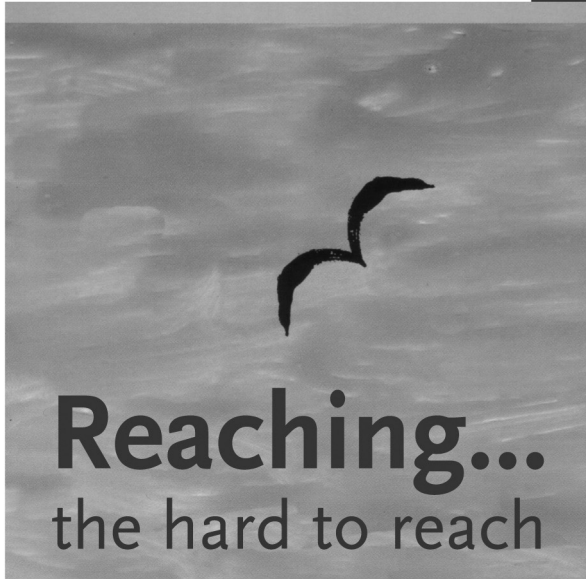
## Aims and philosophy

At St Joseph's we aim to promote a caring community in which each learner and member of staff shows regard for the needs and feelings of others. We are a Christian community which maintains the status of a centre of excellence in which standards of care and teaching are of the highest order and are constantly developing.

## Staff qualification and selection

The governors of St Joseph's recognise that the staff are the school's most important resource. Staff are qualified and experienced, and many have additional qualifications. Appointments of all staff are subject to formal interview, detailed references and a Criminal Records Bureau check.

# NCH Schools



**NCH helps children achieve their full potential. Through our services we support some of the most vulnerable and excluded children, young people and their families in the UK.**

**NCH**  
85 Highbury Park  
London N5 1UD  
Telephone: 020 7704 7000  
Fax: 020 7226 2537

**[www.nch.org.uk](http://www.nch.org.uk)**

Registered charity no. 1097940



**Cotswold Community**  
(Challenging behaviour)  
School and therapeutic community  
Ashton Keynes, Wiltshire  
Principal: Andrew Thomas  
[andrew.thomas@nch.org.uk](mailto:andrew.thomas@nch.org.uk)

**Headlands School**  
(Challenging behaviour –  
Aspergers ASD)  
Residential and day special school  
for pupils aged 11-16  
Penarth, South Wales  
Principal: Matthew Burns  
[matthew.burns@nch.org.uk](mailto:matthew.burns@nch.org.uk)

**Penhurst**  
(PMLD)  
Non-maintained residential special  
school and extended provision  
for pupils aged 11-25  
Chipping Norton, Oxon  
Principal: Stephen Bajdala-Brown  
[stephen.bajdala-brown@nch.org.uk](mailto:stephen.bajdala-brown@nch.org.uk)

**Westwood**  
(Challenging behaviour)  
Day special school for pupils  
aged 11-16  
Broadstairs, Kent  
Principal: Craig Walter  
[craig.walter@nch.org.uk](mailto:craig.walter@nch.org.uk)

**NCH Schools**  
NCH Schools Administrator:  
Adam J G Nelmes  
St David's Court, 68a Cowbridge  
Road East, Cardiff CF11 9DN  
Telephone: 029 2022 2127  
For general enquiries:  
[adam.nelmes@nch.org.uk](mailto:adam.nelmes@nch.org.uk)

# St Mary's Wrestwood Children's Trust/School & College

**S**

Wrestwood Road, Bexhill-on-Sea, East Sussex TN40 2LU

Telephone: 01424 730740 Fax: 01424 733575

Email: [adm@st-marys.bexhill.sch.uk](mailto:adm@st-marys.bexhill.sch.uk) Website: [www.st-marys.bexhill.sch.uk](http://www.st-marys.bexhill.sch.uk)

Charity Number: 307021/A

Chief Executive Officer: Ms Gail Pilling –  
BA(Hons), MA(Ed Mng), PGCE, C(Ed)Psychol,  
(AFBPsS), LCSLT (MRCSLT)

Established: 1922

Status: Non-maintained Special School

DfE Registration No: 845/7000

Type of School: Mixed – Full/flexible/weekly  
boarding and day

Number on Roll: 132

Age Range: 7-19

Teaching Staff: 28

Residential Care Staff: 70

Speech and Language Therapists: 13

Other Therapy and Support Staff: 86

Length of School Year: 38 weeks

Fees: Obtainable from Trust

## Special needs catered for

Speech and Language impairments/Social Communication disorders/Autism (including aspergers)/Physical/Medical problems, Hearing Impairment and Acquired Brain Injury, all within MLD range.

## Specialist facilities

Speech/language therapy; teaching for the hearing impaired; physiotherapy; occupational therapy; nursing and care staff; emotional and psychological support; hydrotherapy; individual learning programmes based on the National Curriculum (7-16); Independent Living programmes/vocational course (16-19); realistic and comprehensive life skills training and special diets catered for.

## Support services provided

Psychologist; school medical officer; local dentist; visual screening and full-time social worker; specialist careers advice and work experience.

## Home school links

Regular weekends home; regular contact with family; parents' consultation days; annual review meetings; home visits by social worker and other staff as appropriate; termly newsletter and weekly electronic home-trust communication system.

## General environment

Located on the edge of a small town close to the sea, St Mary's also enjoys the advantages of being within easy reach of Hastings, Eastbourne, Brighton and London. The school and college comprise of a beautiful late 19th century residence to which has been added modern purpose-built education blocks with gymnasium and heated indoor swimming pool and a wing comprising dining hall, assembly hall, art therapy room and fully-equipped design and technology and food technology workshops. Pupils and students are taught in small classes. They also have access to all the local sports, cultural and entertainment facilities. The children are based in homely living areas/houses in the care of a high ratio of qualified child care staff. Therapy and other support is available across the Waking Curriculum. In addition, the college operates two residential houses in Bexhill town which allow students to access the local community.

## Aims and philosophy

We aim to provide a calm, safe, secure and supportive environment where young people follow an education programme based on National Curriculum requirements (7-16), tailored to meet individual learning needs, and including structured life skills training. We assess all learners' needs in respect of speech and language therapy, physiotherapy, occupational therapy and emotional support, and carry through individual programmes as necessary. Our multi-disciplinary team have the skills, qualifications and experience so essential for working with this group of learners.

***St Mary's is a NASS school and has the charter marks for: Ofsted Outstanding 2008/09; Investor in People; Healthy Schools; Committed to Careers and Positive about Disabled People.***

## St Rose's School

Stratford Lawn, Stroud, Gloucestershire GL5 4AP

Telephone: 01453 763793 Fax: 01453 752617

Email: [admin@stroses.org.uk](mailto:admin@stroses.org.uk) Website: [www.stroses.org.uk](http://www.stroses.org.uk)

**Established:** 1912

**Principal:** Appointment pending

**Status:** Non-maintained

**DfE Registered No:** 916/7006

**Age Range:** 2-19

**Type of School:** Mixed – Day and boarding,  
the latter is fully flexible

**Number on Roll:** 63

**Teaching Staff:** 16

**Residential Care Staff:** 21

**Special Needs Support Staff:** 39

**Length of School Year:** 38 weeks

**Fees:** On application

### Special needs catered for

All children have some physical impairment with allied sensory and learning problems giving rise to special educational needs, including partially sighted, hearing impaired, speech & language difficulties and children with epilepsy.

### Specialist facilities

High staff ratio. Purpose-built school. Leisure activities, evening and weekends including links with surrounding community, swimming and riding. Competitive sport at a national level.

### Support services provided

Medical and nursing cover. Physiotherapy, speech therapy, occupational therapy, music therapy, massage therapy, dental service, orthopaedic consultants, teacher of the visually impaired, teacher of the hearing impaired, orthotic and wheelchair clinic, parents forum, open day and school production.

### Home school links

Parent/family visits – children home at parental request for weekends. Parents evening. Frequent reviews. Strong social and fund-raising group.

### General environment

The school is wheelchair accessible at the centre of a small rural town. The grounds are large and there is a sports track. The Health Centre and shops are in close proximity. The grounds are large and there is an on-site hydrotherapy pool. The children are encouraged to take part in local activities and events.

### Aims and philosophy

St Rose's was founded by Dominican Sisters. There is a team of dedicated staff with a board of governors. Its Christian philosophy, structured education environment and encouragement provides an opportunity for students to become independent and develop to their fullest extent physically, emotionally, intellectually and spiritually, developing their own sense of worth and purpose.

### Staff qualification and selection

All staff are highly qualified in the care and education of children with special needs, including the visual and hearing impaired.

## St Vincent's School

A specialist school for sensory impairments and other needs

**Yew Tree Lane, West Derby, Liverpool L12 9HN**

**Tel: 0151 228 9968 Fax: 0151 230 5070**

**Email: office@stvin.com Website: www.stvin.com**

**School Status: Non-maintained**

**Type of School: Co-educational – weekly, boarding, day & extended evening placement (term time only)**

**Member of: NASS, CES, CISC, SSAT, NOR up to 50**

**Religious Affiliation: Catholic ethos underpins a multi-faith and ethnic environment**

**Principal: Mr S. Roberts**

**Charity No: 1102657**

**Age Range: 4-19**

**Special Needs Provision: Sensory impairment and other needs**

**Range of Fees: Day £32,574-£45,600**

**Residential £45,549-£63,726**

**Date of Foundation: 1841**

### Provision

- Academic, vocational, personal and social education
- Access to the National Curriculum, tailored to individual need, leading to 'A' level, BTEC National L3, BTEC First Certificate, GCSE, BTEC Entry Level, Entry Level Certificate, Unit Awards
- High staff to pupil ratio
- Specialist teaching supported by a qualified team of mobility instructors, learning support assistants
- Independence training by fully-qualified care staff
- Modern living accommodation with en-suite facilities
- Access Physiotherapist, Speech Therapist, Educational Psychologist, Music Therapist, Dentist and Doctor
- College and local mainstream school links to support inclusion
- An environment that is inclusive of mutual respect for all the religious faiths
- Work Experience Placements

### Specialist facilities

- Well-equipped classrooms with appropriate lighting, internally networked PC's, incorporated speech synthesis and screen magnification
- Fully functional Learning Resource Centre stocked with materials in Braille, large print and audio format providing an environment conducive to independent study and research – closely linked to national organisations
- Therapy Suite
- Science Laboratory
- Recording Studio and music room
- Fully equipped gym and access to a wide range of sporting facilities – multi-gym, indoor swimming pool, adventure playground and soft play environment
- Youth Club

### Support services provided

- Home school links / Family Liaison Officer
- Outreach Support
- Range of assessments
- Links with local community groups
- Educational visits and field trips and a wide range of sporting activities

## Sunfield School

Clent Grove, Woodman Lane, Clent, Stourbridge, West Midlands DY9 9PB  
Tel: 01562 882253 Fax: 01562 883856

Website: [www.sunfield-school.org.uk](http://www.sunfield-school.org.uk) Email: [sunfield@sunfield.worcs.sch.uk](mailto:sunfield@sunfield.worcs.sch.uk)

**Established:** 1930

**Principal:** Amanda Jones

**Status:** Independent Approved

**DfE Registered No:** 885/6024

**Age Range:** 6-19

**Number on Roll:** 60

**Type of School:** Mixed

**Full boarding for children with Severe & Complex Learning Needs**

**Teaching Staff:** 86 + 42 SSAs

**Residential Care Staff:** 260 FTE

**Length of School Year:** 52 weeks

**Fees:** Available on application

### Special needs catered for

Severe learning difficulties with or without challenging behaviour; autistic spectrum disorders.

### Specialist facilities

10 houses each provide a home for 6-8 students. There is a specialist provision operating an integrated TEACCH curriculum for children with autistic spectrum disorders. The school buildings include classrooms, hall/theatre, games, craft, domestic skills, computer, soft play and sensory rooms, with hard and grass play areas nearby.

### Support services provided

Sunfield employs a psychologist and occupational, speech, play and music therapists. A psychiatrist visits regularly. Children are taken out to local swimming pools, sports grounds, shopping centres and other nearby facilities.

### Home school links

Sunfield works on an open door basis for visits, with special school open days for parents. Parents may take their children home during holidays and weekends, and are always invited to attend reviews. There are two Family Centres where families can stay while visiting their child. We also have a Family Services team who offer support and advice to the whole family.

### General environment

Sunfield is set in 58 acres of parkland on the edge of the Clent Hills looking out over the Worcestershire countryside but only 12 miles from the centre of Birmingham and close to main railway and motorway links. The grounds themselves contribute to the therapeutic process and general air of freedom, as well as providing scope for games and other outdoor activities.

### Aims and philosophy

At Sunfield we recognise each child as a learner and communicator with unique contributions to make. The principles of dignity and respect inform all aspects of our practice. We operate an integrated curriculum encompassing the National Curriculum and cross-curricular themes. It is jointly led by curriculum managers with backgrounds in Education and Care. Children are given a diverse range of experiences based on their individual needs.

### Staff qualification and selection

All teachers are professionally qualified with additional qualifications. Classes work with assistants who access training. Houses are staffed by qualified team leaders (NVQ4) and deputies working to the Head of Care. All care staff have or are working towards NVQ3.

## Tadley Horizon School – Priory Education Services

T

**Tadley Common Road, Tadley, Hampshire RG26 3TB**  
**Tel: 01189 817 720 Email: [tadleyhorizon@priorygroup.com](mailto:tadleyhorizon@priorygroup.com)**  
**Website: [www.priorygroup.com/education](http://www.priorygroup.com/education)**

**Principal: Phil Jonas**  
**Status: Independent Special School**  
**Age range: 5-19**  
**Number of places: 60**

**Type of School: Co-educational, residential and day**  
**Length of School Year: 52 weeks**  
**Fees: Available on request**

### Special needs catered for

Tadley Horizon is a co-educational school specialising in the care and education of pupils between the ages of 5 to 19, who are diagnosed as being on the autistic spectrum with associated learning difficulties. Children may also have challenging behaviour as a result of their communication difficulties and their lack of social understanding.

### Specialist facilities

Within the safe, structured and predictable environment of Tadley Horizon pupils will develop the skills needed to live as independently as possible, so that they are able to enjoy their lives and make real life choices as they reach adulthood. The design of the school, the structure of the educational programmes and residential areas, are created to achieve an autism-friendly environment.

### Support services provided

The teaching approach provides physical and visual opportunities for learning and helps pupils to achieve their full potential by understanding their limitations and making the most of their abilities. Managing expectations is a core part of the programme. Pupils have access to a wide range of therapies including: speech and language therapy, occupational therapy, music therapy, play therapy and equine therapies.

### Education

Through raising standards in the education of young people with autism, Tadley Horizon aims to help all pupils to lead happy and fulfilling lives. Tadley Horizon adopts a multidisciplinary approach to education and care using the best practice from models such as TEACCH, PECS and active learning programmes. Pupils learn how to develop effective compensatory strategies to overcome their difficulties in social and emotional processing, communication and inflexibility in thinking and behaviour.

### Residential care

Tadley Horizon School works hard to establish a close partnership with parents in order to support pupil progression and get the very best out of them in all areas. Parents are kept well informed of their child's progress and are encouraged to participate in their child's development programme as much as possible.

### Aims and philosophy

Our mission statement is to create a safe and secure environment in which individuals are enabled to achieve their full potential by providing them with diverse learning opportunities. We aim to develop independence for each individual according to their own abilities.

## Talocher School – Priory Education Services

**Talocher Farm, Wonastow Road, Monmouth NP25 4DN**  
**Tel: 01 600 740777 Email: talocherschool@priorygroup.com**  
**Website: www.priorygroup.com/education**

**Principal: Mr Mike Borland**

**Status: Registered and approved by the Welsh Assembly Government and inspected by Estyn, the Welsh Schools Inspectorate**  
**Number of Places: 20**

**Age Range: 11-18**

**Type of School: Co-educational – Residential and day**  
**Length of School Year: 38-52 weeks**  
**Fees: Available on request**

### Special needs catered for

Talocher School is a specialist residential school for young people with behavioural, emotional and social (BESD) difficulties and complex needs. Many pupils will have experienced significant disruption in their schooling, including exclusion from mainstream education and may have been out of school for long periods of time. Typically pupils will have a Statement of Special Educational Need and may be looked after children by the local authority. Many have experienced multiple placement breakdowns.

### Specialist facilities

The school meets the needs of pupils at Key Stages 3 and 4 and operates on a 38-week basis. Day pupils from the local area are accepted at the school for normal school terms and residential placements in the Children's Homes are flexible for up to 52 weeks of the year depending on need. The curriculum is broad, balanced, relevant and differentiated to meet individual pupil needs. Fostering services are also provided within the Priory Group for young people aged 0-17.

### Support services provided

Each pupil has an individual integrated education and care plan to meet their specific needs. Behavioural assessments and individual development plans are delivered by an assistant psychologist, chartered educational psychologist and child & adolescent psychotherapist as external consultants, and there is also access to music therapy, community psychiatric nurse, psychiatrist and psychiatric assessments. On admission, assessment is in accordance with the young person's care, education and pathway plans, governed by the Every Child Matters framework. Assessment is ongoing and regularly reviewed with all parties concerned.

### Residential care

Residential care is in one of six Children's Homes within the surrounding area and the homes are for up to six people. Each young person has individually tailored care and behaviour management programmes that address their self-care, health, emotional and behavioural needs, and ensure that they are given the best possible chance of success.

### Education

With encouragement and support we reintroduce young people to education offering a broad, relevant and differentiated curriculum based on the National Curriculum, and adapted where required to meet individual needs. Learning is in small age appropriate groups of three or four pupils and one-to-one tuition is available to provide focus for those that require additional support.

### Aims and philosophy

To enable young people to acknowledge and cope with their specific learning and behavioural difficulties and, through the provision of appropriate and high quality education, assist them in fulfilling their potential.

**Gamrie, Banff, Aberdeenshire AB45 3JN Tel: 01261 851584**

**Email: [trouphouse@priorygroup.com](mailto:trouphouse@priorygroup.com)**

**Website: [www.priorygroup.com/education](http://www.priorygroup.com/education)**

**Co-Principals: Eleanore Smith and Glenn Millar**

**Status: Independent Special School**

**Age Range: 8-16**

**Number of Places: 12**

**Type of School: Boys and girls,  
residential and flexible boarding**

## Special needs catered for

Boys and girls aged 8 to 16 who have autistic spectrum disorders with behavioural and emotional difficulties and associated learning difficulties.

## Specialist facilities

Troup House School is set in 43 acres of woodland with the main house overlooking the Moray Firth. This natural rural setting plays an important part in the holistic experience of our young people. Young people can engage with the natural environment and are encouraged to participate in the care of the school and gardens. This provides young people with the opportunity to gain a real-life educational experience which is supported by the curriculum. We also provide step-down services within the local community to prepare our young people with the necessary independence skills before returning home.

## Support services provided

Young people have access to a range of therapies, most of which are integrated into the education and care programme. Person centred planning is the central theme for all interventions and approaches, with tools such as life story work, life space crisis intervention and cognitive behavioural interventions being adopted. Therapies are tailored according to the young persons' individual needs with psychological provision where and when required.

## Education

Troup House School adopts a multidisciplinary approach to education that is individualised to take account of the different learning needs of each young person. The curriculum is firmly based upon the principles of the Curriculum for Excellence and ensures that all young people are equipped with the core skills of literacy, numeracy and information communication technology, whilst at the same time building on the individual interests of each young person. Young people are motivated to re-engage with learning through cross-curricular themes, that are often practical and experiential.

## Aims and philosophy

Troup House School aims to deliver the highest level of education and care according to individual need in a safe, positive and enriching environment in which every young person is encouraged to achieve the best possible academic, social and vocational outcomes.

## Unsted Park School – Priory Education Services

Mustead Heath Road, Godalming, Surrey GU7 1UW

Tel: 01483 892061 Email: [unstedparkschool@priorygroup.com](mailto:unstedparkschool@priorygroup.com)

Website: [www.priorygroup.com/education](http://www.priorygroup.com/education)

**Principal:** Mr Rick Tracey

**Status:** Independent Special School

**Age Range:** 7-19

**Number of Places:** 50

**Type of School:** Co-educational –

Residential, day/extended day and respite

**Length of School Year:** 38 weeks

**Fees:** Available on request

### Special needs catered for

Specialist education for children aged 7-19 with Asperger's Syndrome and associated disorders. The school is specifically designed to allow young people to thrive effectively within an ever demanding and complex society. This is achieved by developing personalised, predictable routines with high levels of individual support.

### Specialist facilities

A broad, balanced and differentiated curriculum, including a modified National Curriculum, relevant to the needs of pupils with Asperger's Syndrome (AS). We use teaching, residential and leisure situations as learning opportunities.

### Support services provided

Each pupil has the support of a key worker who ensures that individual needs are being met. Pupils have access to a range of specialist therapies including SALT, counselling, art therapy and psychologist and psychiatric support. Flexible programmes are available, tailored to meet the individual's need, including full and weekly boarding, respite and extended day options.

### Education

A highly trained and dedicated staff team aim for academic achievement and development of social and communication skills, giving pupils increased confidence, independence and organisational skills. Pupils have individual educational plans (IEP's) tailored to meet their specific needs and designed to maximise their strengths and ambitions. We expect pupils to achieve success in GCSEs and other accredited qualifications.

### Extended day

An extended day running from 8am-8pm is available for those day pupils who benefit from more support beyond the normal school day. Activities focus on independence and social skills training. This extended support enables many children to live at home with their families where residential schooling may otherwise be the only option.

### General environment

Set in 44 acres of picturesque countryside, the school offers a safe and spacious environment in which to learn and grow. It includes specialist classrooms for subjects such as IT, home economics, science and music. Sports and leisure facilities include outdoor hard and soft playing areas and an indoor swimming pool and gym.

### Aims and philosophy

Unsted Park School provides a pathway to independence, empowering pupils to manage everyday life scenarios safely and appropriately. There is emphasis on independent living skills, training and work experience. Typically young people will go on to further education, training and employment.

# West Kirby Residential School

Specialist Special Educational Needs (SEN) College



Meols Drive, West Kirby, Wirral CH48 5DH

Telephone: 0151 6323201 Fax: 0151 6320621

Website: [www.wkrs.co.uk](http://www.wkrs.co.uk)

**Established:** 1881

**Principal:** Mr GW Williams –

**M.Ed., Ad. Dip. Sp. Ed.**

**Status:** Non-maintained

**DfE Registered Number:** 344/7015

**Age Range:** 5-16+

**Number on Roll:** 120

**Type of School:** Mixed –

**Day/weekly boarding**

**Teaching Staff:** 16

**Residential Care Staff:** 22

**Education Support Staff:** 25

**Medical/Therapeutic Staff:** 9

**Length of School Year:** 38 weeks

**Fees:** On application

## Special needs catered for

Approximately one quarter of the pupils attend on a weekly boarding basis or regular overnight stays. Pupils have complex special needs who are recognised by their Local Authority as having social, medical, emotional and behavioural problems. We also cater for Speech, Language and Communication difficulties and medical conditions including Asperger's Syndrome.

## Specialist facilities

All pupils are offered full access to the National Curriculum and work towards appropriate accreditation in all subjects. Differentiation and small classes with high levels of adult support. The school facilities are modern and well equipped, including 12 classrooms and a Science Laboratory. Practical subjects are well supported with a sports hall and multi gym, home economics and textiles, photography, music and CDT areas, all having been refurbished or newly built since 2001.

## Support services provided

We employ a part-time Educational Psychologist and a part-time Physiotherapist who see pupils on a one-to-one or group basis, and a visiting consultant Psychiatrist provides advice and support. Our Speech and Language department has one full and one part-time Therapist, again working with individuals or in group situations. A consultant dietician advises on planning menus for all pupils, and consults with medical staff on specialist diets when required. Qualified nurses are on duty daily and on call overnight, with a local GP visiting the school regularly. The school works closely with all child agencies.

## Residential setting

The residential areas are again modern and of high quality, the children being based in three house groups with individual bedrooms, joint recreation and dining facilities. Some of our residents now live in houses in the local community. Care staff are on duty throughout lunchtimes, evenings and overnight and offer further support in class during the school day. A programme of after school activities, often within the local community, is prepared with the pupils. Flexible boarding can be arranged to suit individual pupil needs.

## Home school links

Great emphasis is placed on regular contact with parents and carers. Annual reviews are held for all pupils with invitations to parents and professionals. Parents are welcome at any time. Comprehensive end of year reports are prepared for all pupils. Parents' evenings are organised twice yearly to discuss progress.

## General environment

The school is situated close to the centre of West Kirby, a small town on the North West coast of the Wirral peninsula. It is ideally situated for outdoor pursuits such as walking, cycling and watersports, and local amenities provide a range of cultural and leisure entertainment, all of which pupils are encouraged to participate in. Annual summer camps are held for all pupils, both locally and abroad to suit all abilities and age groups.

## Aims and philosophy

The school's main aim is to provide a stable, caring and stimulating environment within which children can come to terms with their difficulties and receive professional treatment, support and therapy, thus encouraging them to meet their full potential. Pastoral Care is a strength of the school, as is the focus on Every Child Matters.

## Staff qualification and selection

All teaching staff are approved by the DfE and all Care and Support staff are very experienced and fully qualified, or are working towards appropriately nationally recognised qualifications. Ongoing support and training is available and the school holds Investor in People Bronze Status. Recruitment procedures are rigorous.

## Westmorland School – Part of the Witherslack Group

Weldbank Lane, Chorley, Lancashire PR7 3NQ

Tel: 01257 278899 Fax: 01257 265505

E-mail: office@westmorlandschool.co.uk Website: www.westmorlandschool.co.uk

**Head Teacher: Mrs S.M. Asher**

**Age Range: 5-11**

**Status: Independent**

**DfE Approved No: 888 6048**

**Type of School: Co-educational Day School**

**Number of Places: 32**

**Fees: Depending upon individual need**

### Special needs catered for

Behavioural, Emotional and Social difficulties and associated learning needs. BESD, ASD, ADHD, Spld, MLN and Speech and Language difficulties.

### Specialist facilities

All pupils are taught in small class groups, which together with a high staff:pupil ratio, ensures their educational progress and personal development. The warm, stimulating and caring environment includes a dedicated therapy room.

### Support services provided

Children receive high standards of support and care, through our well structured day equipping them with the skills to succeed, building their self esteem and confidence. Our qualified and dedicated staff team support pupil's needs, using continuous assessment and supportive advice from our multi disciplinary professionals. We have the support of our Educational Psychologist, Psychotherapist/Art Psychotherapist and Speech and Language Therapist. The majority of our Year 6 pupils take the SATS tests and achieve results which are comparable with mainstream schools.

### Home school links

Parents are welcome and are encouraged to attend school events. Home visits by the Pastoral Care Manager and other contacts are arranged to help develop a mutually supportive link.

### General environment

We are situated central to Chorley, Lancashire with easy access to the M6, M61 and the M65. Children attend from a wide radius of home destinations. Westmorland School (Chorley), along with Cumberland School (Bamber Bridge) offer continuous education for pupils from 5 through to 16, including children and young people who are resident with in Witherslack Children's homes.

### Aims and philosophy

Westmorland School is a creative, innovative learning environment where children are given the opportunities to successfully engage in their education. The School vision statement is: *"We learn to live together, together we live to learn"* and there is a pleasant, caring and purposeful working atmosphere where pupils feel confident to ask questions. We provide a broad and balanced curriculum with opportunities for enrichment activities through lunchtime clubs, which include badminton, craft club, gardening club, visits and field trips, off-site activities such as trampolining and swimming lessons.

### Staff qualification and selection

All staff are recruited through a high quality selection procedure and their suitability checked through the Criminal Records Bureau at Enhanced Level.



www.hesleygroup.co.uk

Referrals 0800 055 6789



## Wilsic Hall School

Rated 'Outstanding' in both Care and Education by Ofsted

Wilsic Hall School provides residential care and education for young people with a range of complex special needs arising from autism, severe learning difficulties and associated communication problems.

Registered for up to 36 young people from ages 11 to 19 of mixed gender.

Located within its own 14 acre site on the outskirts of Doncaster, South Yorkshire.

Parent Quote

*"we are delighted with the progress made"*

Website: [www.wilsichallschool.co.uk](http://www.wilsichallschool.co.uk)  
[enquiries@hesleygroup.co.uk](mailto:enquiries@hesleygroup.co.uk)



## Wings School

**Whasset, Milnthorpe, Cumbria LA7 7DN Tel: 015395 62006**

**Fax: 015395 64811 Email: [info@wingschool.co.uk](mailto:info@wingschool.co.uk)**

**Website: [www.wingschool.co.uk](http://www.wingschool.co.uk)**

**Established: 2003**

**Director of Education & Care: Pam Redican**

**Head Teacher: Mr Michael Webster**

**Status: Independent (Member of NASS)**

**DfE Registration: 909/6053**

**OFSTED SCO48552**

**Registration as Children's Home**

**Age Range: 11-17**

**Number on roll: 54 places**

**Type of School: Residential Special School for children with emotional, social and behavioural difficulties**

**Teaching staff: 12 Teachers & 8 LSA's**

**Residential Care Staff: 46**

**Support Staff: 24**

**Length of School Year: 38/52 weeks**

### Special needs catered for

Emotional, social and behavioural difficulties, ADD, ADHD, Asperger's syndrome, specific learning difficulties.

### Specialist facilities

Purpose-built modern classrooms, technology and science facilities and award-winning residential accommodation, all furnished to a high standard of safety and comfort. ICT suites to the most up-to-date specification. New Sports Hall opened 2008.

### Support services provided

School Nurse and visiting GP. Access to Consultant Chartered Educational Psychologist, careers and counselling services.

### Home school links

Excellent levels of consultation and communication with parents and carers at all times. Young people can be in daily contact with their parents/carers if they wish. Parents/carers are most welcome to visit at any time by appointment and assistance can be given to arrange overnight accommodation.

### General environment

24 acres of grounds in a very pleasant rural location in South Cumbria with easy access to motorways and rail systems.

### Aims and philosophy

We place particular emphasis on progress in schoolwork, success in national examinations and mainstream standards of behaviour, which are expected for all our young people. We help them to recognise the ways in which they approach everyday difficulties and to develop ways of dealing with them that makes them happier and more successful, using emotional intelligence and effective thinking skills. We stress the importance of developing self-awareness and self-management rather than relying on external controls. We pay attention to everything that can make a difference in teaching, management or the physical environment and aim to develop the best practice in everything we do. We are committed to becoming a centre of excellence.

### Staff qualification and selection

Our Director of Education and Care received national teaching awards for outstanding school leadership in 2000 and the Pride of Britain Award in 2007. We have a caring, enthusiastic and committed staff already highly experienced in working with children with EBD. All teachers are fully qualified and care staff are qualified in NVQ/DipSW.

Kirklington Hall, Kirklington, Newark, Nottinghamshire NG22 8NB

Tel: 01636 817430 Fax: 01636 817435

Email: [info@wingseastschool.co.uk](mailto:info@wingseastschool.co.uk) Website: [www.wingseastschool.co.uk](http://www.wingseastschool.co.uk)

Established: 2010

Director of Education & Care: Pam Redican

Status: Independent (Member of NASS)

DfE Registration : 891/6036

OFSTED SC402370

Registration as Children's Home

Age range: 11-17

Number on Roll: 34 places

Type of School: Residential Special School for children with emotional, social and behavioural difficulties

Teaching Staff: 8 Teachers & 6 LSA's

Residential Care Staff: 34

Support Staff: 15

Length of School Year: 38/52 weeks

## Special needs catered for

Emotional, social and behavioural difficulties, ADD, ADHD, Asperger's syndrome, specific learning difficulties.

## Specialist facilities

State-of-the-art modern classrooms, ICT suites, technology and science facilities, purpose-built high quality residential accommodation and Sports Hall.

## Support services provided

Access to Consultant Chartered Educational Psychologist, GP and counselling services.

## Home school links

Excellent levels of consultation and communication with parents and carers at all times. Young people can be in daily contact with their parents/carers if they wish. Parents/carers are most welcome to visit at any time by appointment and assistance can be given to arrange overnight accommodation.

## General environment

20 acres of excellent grounds in a very pleasant rural location beside Kirklington village, with easy access to national road and rail systems.

## Aims and philosophy

We place particular emphasis on progress in schoolwork, success in national examinations and mainstream standards of behaviour, which are expected for all our young people. We help them to recognise the ways in which they approach everyday difficulties and to develop ways of dealing with them that makes them happier and more successful, using emotional intelligence and effective thinking skills. We stress the importance of developing self-awareness and self-management rather than relying on external controls. We pay attention to everything that can make a difference in teaching, management or the physical environment and aim to develop the best practice in everything we do. We are committed to becoming a centre of excellence.

## Staff qualification and selection

Our Director of Education and Care received national teaching awards for outstanding school leadership in 2000 and the Pride of Britain Award in 2007. We have a caring, enthusiastic and committed staff already highly experienced in working with children with EBD. All teachers are fully qualified and care staff are qualified in NVQ/DipSW.

## Witherslack Hall School – Part of the Witherslack Group

Witherslack, Grange-over-Sands, Cumbria LA11 6SD

Tel: 01539 552397 Fax: 01539 552419

Email: [admin@whs.uk.com](mailto:admin@whs.uk.com)

**Established:** 1972

**Head Teacher:** Ms Tina McIntosh (MBA)

**Status:** Independent

**DfE Registered No:** 909/6027

**Age Range:** 11-19

**Number on Roll:** 64

**Type of School:** Boarding – flexible boarding – day pupils

**Teaching Staff:** 16

**Residential Care Staff:** 40

**Special Needs Support Staff:** 16

**Length of School Year:** 38 weeks

**Fees:** Available on request

### Special needs catered for

Children with special educational needs associated with emotional/social/behavioural and specific learning difficulties. Attention Deficit Hyperactive Disorder, Moderate Learning Difficulties, Conduct & Oppositional Disorders, Autistic Spectrum Disorders and Asperger's Syndrome.

### Specialist facilities

All areas of the National Curriculum are taught within specialist areas. A range of vocational subjects are offered by specialist instructors including Motor Vehicle Engineering, Construction and Environmental Studies. Residential provision provides high quality independent living areas within the school grounds. All rooms are furnished and decorated to a high standard. The school offers higher dependency provision both educationally and residentially for a variety of complex needs.

### Support services provided

Witherslack Hall School provides the services of an on-site school nurse, speech and language therapist, educational psychologist and counsellor-psychotherapist. A 'Buddy System' is also provided for new boys starting at Witherslack Hall.

### Home school links

Parents are always welcome and are encouraged to attend school events. Home visits and other contacts are arranged to help develop a mutually supportive link. Weekend leave patterns are negotiable.

### General environment

The school is located in a mansion house which was built as a hunting lodge in 1874, and is situated between the Lakeland Villages of Witherslack and Bowland Bridge. It has extensive playing fields, woodlands and a fishing lake.

### School ethos

The overall ethos of the school is geared towards providing a safe, secure and caring environment within which personal growth and development is promoted. Opportunities to experience success, learn from mistakes, and build trusting relationships serve to enhance confidence and self-esteem. Extensive individual programmes are provided within education and care, which allows this ethos to be implemented. The school offers an extensive range of nationally recognised academic and vocational qualifications and a high quality activity programme catering for a variety of needs.

### Staff qualification and selection

All staff are recruited through a high quality selection procedure and their suitability checked through the Criminal Records Bureau. All care staff are supported through their NVQL3 Caring for Children and Young People. Ongoing staff training occurs weekly and staff are encouraged to further their knowledge and skills.

## Woodstock House – Part of Kisimul School



Woodstock Lane North, Long Ditton Surrey, KT6 5HN

Tel: 0208 3352570 Fax: 0208 3352571

Email: [admissions@kisimul.co.uk](mailto:admissions@kisimul.co.uk) Website: [www.kisimul.co.uk](http://www.kisimul.co.uk)

**Founded: 1977**

**Status: Independent Residential**

**Special School**

**Type of School: Mixed**

**Age Range: 8-19**

**Head Teacher: Chris Owen**

**Length of School Year: 52 weeks**

**Fees: On application**

**DfE Approved No: 936/6593**

**Number on Roll: 39**

### Special needs catered for

Kisimul School is one of the UK's leading independent residential special schools, offering a homely and safe environment for children who have severe learning difficulties, challenging behaviour, autism and global developmental delay.

### Specialist facilities

Woodstock House, part of Kisimul School, offers residential education, care and leisure programmes, for up to 52 weeks of the year. The school is registered with the Department for Education and Ofsted. Limited day placements are also offered, including outreach day placements. Woodstock House provides a highly structured school curriculum to address the very specific needs of its pupils. Classes are small and staffed at a ratio of at least 1:1. The integrated developmental curriculum incorporates the National Curriculum (Lower School) or Adult Pre-Entry Curriculum Framework (Post-16) and a wide range of therapeutic programmes, collectively designed to meet the diverse sensory needs of the pupils. These include Speech & Language therapy, Music therapy, Aromatherapy, and EASIE (Exercise and Sound in Education). A key priority is to develop pupils' communication skills, and since many are non-verbal the use of Makaton signing and PECS (Picture Exchange Communication System) is taught. Pupils also benefit from our in-house Educational Psychology support team. Pupils participate in the Duke of Edinburgh Award and gain accreditation through the ASDAN Towards Independence scheme.

### General environment

Woodstock House opened in 2008 and received its first pupils in April. Further development has taken place and the school now provides 46 residential placements with a further extension to the school and residential home in September 2011. Woodstock House has been developed to be a mirror image of its existing school operation, Kisimul School, using the same teaching methods within a safe and secure environment. Facilities include an adventure playground, soft play areas, multi-sensory room for relaxation and stimulation, with plans in place for a sensory integration room and an indoor swimming pool and gymnasium.

### Home school links

Woodstock House encourages parents to maintain contact with their child by visits, telephone or post, and welcomes visits to the school. Parents are encouraged to attend reviews concerning their child and are invited to take an active part in fund raising events for the school. Newsletters are also sent out each term advising parents of important forthcoming dairy events and news from the school.

### Aims and philosophy

Every child is entitled to develop in an environment which is conducive to learning. The environment should reflect the Every Child Matters outcomes of being healthy, staying safe, enjoying and achieving, making a positive contribution and achieving economic well-being. Pupils should feel secure, enjoy learning and be rewarded for effort. Woodstock House provides the tools for pupils to manage and control their own life-style and behaviour. Kisimul School – Woodstock House's mission is to continuously strive for excellence in the care and education of its pupils, with a vision to have the best assisted living environment. Woodstock House provides a caring and homely environment at all times, where pupils can grow and develop their skills, individuality and independence to carry them through to adulthood. The School works closely with the parents, carers and professionals from its placing authorities to ensure that the highest possible standards of care and education are achieved.



**The following chapter contains a list of further education establishments and continuing care centres throughout the UK dedicated to those pupils with special needs.**

**The establishments available are varied in their services and cover the country.**

**A parent's 10-point checklist for choosing a further education centre.**

- ✎ Does it cater for pupils with the same sort of learning difficulty as my child?
- ✎ Will it provide the full range of teaching and care set out in my child's statement?
- ✎ What are the transport arrangements for getting my child to college and home?
- ✎ Are any boarding facilities available for my child to live and sleep in?
- ✎ How does the establishment keep parents informed about the progress the children are making at college?
- ✎ Do the staff have the correct qualifications? Are they enthusiastic enough?
- ✎ What is the college's attitude towards reintegrating pupils with SEN into mainstream colleges?
- ✎ Does the environment, including the classrooms and non-teaching areas, seem like one in which I want my child to spend the day?
- ✎ Are any formal links which it has with mainstream colleges, including integrated lessons, likely to benefit my child?
- ✎ What are the college's overall aims and philosophy?

## Farleigh Further Education College Frome

– Priory Education Services

North Parade, Frome, Somerset BA11 2AB

Tel: 01373 475470 Email: [farleighfcollege@priorygroup.com](mailto:farleighfcollege@priorygroup.com)

Website: [www.priorygroup.com/education](http://www.priorygroup.com/education)

**Principal:** Mr Andrew Chiffers  
**Status:** Independent FE College,  
**NATSPEC member**  
**Age Range:** 16-25

**Type of College:** Co-educational –  
 Residential and day  
**Fees:** Available on request  
**Number of Places:** 87

### Special needs catered for

Further Education for students aged 16-25 years with Asperger's Syndrome and associated conditions.

### Specialist facilities

Intensive education, social and individual development programmes for students who require more personal tuition and find group situations difficult to cope with. We help individuals to develop strategies for coping with anxieties and dealing with situations that may lead to demanding behaviour and otherwise limit their options.

### Support services provided

Each student has a learning support worker to act as mentor, guide and carer. They ensure that the student's programme meets their needs and capitalises on their strengths and ambitions. Students have access to a psychiatrist, psychologist and speech and language therapies.

### Education

We use mainstream situations as learning opportunities wherever possible. Education sessions are within local mainstream colleges and include a range of academic and vocational studies. Education is continued within the Farleigh residential setting, with opportunities for sessions in literacy, numeracy, IT, and one-to-one sessions on independent living skills. Supported by staff, students learn to deal with their difficulties with communication and social behaviour by experimentation, reflection and practise, and go on to develop strategies for maximising their strengths and abilities.

### Work experience

Some students choose to combine courses in work-based learning with their academic studies. We work in close collaboration with local employers and the local communities to provide constructive work experience for our young people, and to help in the development of their independence.

### Aims and philosophy

Our mission is to help students to prepare for life as fulfilled and self-reliant adults in mainstream situations. The approach prepares young people for employment or higher education and to move further towards independence.

# Farleigh Further Education College Swindon

– Priory Education Services

43 Bath Road, Old Town, Swindon, Wiltshire SN1 4AS

Tel: 01793 719500 Email: [farleighfecollegeswindon@priorygroup.com](mailto:farleighfecollegeswindon@priorygroup.com)

Website: [www.priorygroup.com/education](http://www.priorygroup.com/education)

F

**Principal:** Mr Simon Coles

**Status:** Independent FE

**College,**  
**NATSPEC member**

**Age Range:** 16-25

**Type of College:** Mixed,  
residential and day

**Fees:** Available on request

**Number of Places:** 50

## Special needs catered for

1-3 year Further Education placements for students aged 16-25 years with Asperger's Syndrome and associated conditions.

## Specialist facilities

Intensive education, social and individual development programmes for students who require more personal tuition and find group situations difficult to cope with. We help individuals to develop strategies for coping with anxieties and dealing with situations that may lead to demanding behaviour and otherwise limit their options.

## Support services provided

Each student has a learning support worker to act as mentor, guide and carer. They ensure that the student's programme meets their needs and capitalises on strengths and ambitions. Students have access to a psychiatrist, psychologist and speech and language therapies.

## Education

We use mainstream situations as learning opportunities wherever possible. Education sessions are within local mainstream colleges and include a range of academic and vocational studies. Education is continued within the Farleigh residential setting with opportunities for sessions in literacy, numeracy, IT, and one-to-one sessions on independent living skills. Supported by staff, students learn to deal with their difficulties with communication and social behaviour by experimentation, reflection and practise, and go on to develop strategies for maximising their strengths and abilities.

## Work experience

Some students choose to combine courses in work-based learning with their academic studies. We work in close collaboration with local employers and the local communities to provide constructive work experience for our young people, and to help in the development of their independence.

## Aims and philosophy

Our mission is to help students to prepare for life as fulfilled and self-reliant adults in mainstream situations. The approach prepares young people for employment or higher education, and to move further towards independence.

## The Gatehouse – Priory Education Services

The Gatehouse Tadley Horizon, Tadley Common Road, Tadley, Hampshire  
 RG26 3TA Tel: 00118 981 7720 Email: [tadleygatehouse@priorygroup.com](mailto:tadleygatehouse@priorygroup.com)  
 Website: [www.priorygroup.com/education](http://www.priorygroup.com/education)

**Home Manager:** Phil Jonas

**Status:** Residential facility for young people with autism and associated learning difficulties

**Age Range:** 16-25

**Placement type:** Residential

**Gender:** Mixed

**Fees:** Available on request

### Special needs catered for

Tadley Horizon Gatehouse is a specialist residential facility for young people aged 16 to 25 with moderate to severe autism and associated learning difficulties.

### Specialist facilities

Set on the school campus within the village of Tadley in Hampshire, The Gatehouse is located in a semi-rural location within four acres of beautifully matured grounds. This provides young people with a safe and tranquil environment in which to prepare for supported living, whilst also providing the opportunity to gain daily living, social and interaction skills in the village of Tadley and the nearby town of Basingstoke.

### Support services provided

As a new facility, The Gatehouse builds on the caring, homely environment of Tadley Horizon School. Young people are encouraged to use the local natural environment as educational material, take advantage of the impressive sport and recreational facilities whilst making the transition into adulthood and progressing on to a more independent living environment. The Gatehouse can provide places for five young people for 52 weeks of the year.

### Life development plans

Every young person at The Gatehouse has a Life Development Plan (LDP) tailored to their individual needs. This is monitored by their key worker to ensure that personal growth is nurtured and their full potential is realised.

Life Development Plans include community access, independent living skills, personal activities, academic support, personal risk assessment and behaviour support.

### Therapy support

Therapy support is provided to young people as part of their planned care pathway. Young people have access to a wide range of therapies including speech and language, occupational therapy, music, art and equine therapies.

## Oakhurst Lodge College – Part of Cambian Group

137 Lyndhurst Road, Ashurst, Hampshire SO40 7AW

Tel: 0800 288 9779 Fax: 020 8735 6151

Email: [education@cambianguroup.com](mailto:education@cambianguroup.com) Website: [www.cambianguroup.com](http://www.cambianguroup.com)

Type of College: Autism & SLD,  
Co-educational Boarding  
Age Range: 16-25

Length of College Year: 52 weeks  
Head Teacher: Jenny Wright – BAED,  
MAEd, NPQH

### Special needs catered for

Autism with associated Challenging Behaviours and Learning Difficulties.

### Our approach

In our most recent Ofsted inspection, we were judged to be 'outstanding'. Our approach is individual and holistic. We are positive and motivating, making activities fun and rewarding. We support our students, showing them that new experiences and social situations are not as confusing or frightening as they may appear, thus reducing their anxieties.

### Teaching & lifelong learning

Oakhurst Lodge gives access to an Adult Life curriculum supported by Numeracy and Literacy in the Adult pre-entry Curriculum. This learning continues out of 'taught time' and an extended curriculum allows for generalisation of skill and consolidation of learning. Throughout the day the emphasis is on developing our students' skills at home and in the community, at leisure, and at work in a real-life setting. Vocational & Education training, Individual & Social Skills and Life Skills & Independence are also part of our teaching and learning programmes.

### Environment

We provide an ASD therapeutic environment by which students learn tolerance and coping skills, social and functional communication skills, sensory / visual / motor integration, and behaviour management programmes are also part of our outcome-based measurements.

### Contact us & visits

Please call our dedicated Parent Liaison Officers on 0800 288 9779 to discuss in confidence about your child's needs, the admission process or to arrange a visit. For a copy of the prospectus please visit our website on [www.cambianguroup.com](http://www.cambianguroup.com) or call us on the number above.

## Priory Coleg Wales – Priory Education Services

**Coleg Gwent, Pontypool Campus, Blaendare Road, Pontypool, Monmouthshire  
NP4 5YE Tel: 01793 719 500 Email: priorycolegwales@priorygroup.com  
Website: www.priorygroup.com/education**

**Principal: Simon Coles**  
**Status: Independent FE College,  
NATSPEC member**  
**Age Range: 16- 25**

**Number of places: 20**  
**Type of school: Co-educational,  
residential and day**  
**Fees: Available on request**

### Special needs catered for

Further Education for students aged 16-25 with Asperger's Syndrome and associated conditions.

### Specialist facilities

Intensive education, social and individual development programmes for students who require more personal tuition and who find group situations difficult to cope with. We help individuals to develop strategies for coping with anxieties and dealing with situations that may lead to demanding behaviour and otherwise limit their options.

### Support services provided

Each student has a learning support worker to act as a mentor, guide and carer. They ensure that the student's programme meets their needs and capitalises on their strengths and weaknesses. A combination of evidence based therapies are offered to students at Priory Coleg Wales to help them with their ongoing personal development. Therapies include art therapy, speech and language therapy and counselling. This integrated programme of therapy promotes a consistent approach to social communication and helps students to raise awareness of their individual difficulties, the effect on others and provides clear information and useful strategies for communication in adulthood.

### Education

The philosophy of Priory Coleg Wales is based upon providing as many learning opportunities within mainstream educational settings as possible to allow choice, equality and diversity. Our young people are able to benefit from successful partnership agreements with local colleges and have access to over 150 academic and vocational courses including A levels and GCSEs. Work based learning, work experience and employability skills are embedded into the study programmes to help with transition and preparation for further study or employment.

### Work experience

Many students will choose to combine courses in work-based learning with their academic studies. We work in close collaboration with local employers and the local communities to provide constructive work experience for our young people, and to help in the development of their independence.

### Aims and philosophy

Priory Coleg Wales enables students to achieve their learning goals, whilst helping them to grow as individuals, gaining confidence in their abilities and accepting the complexities of Asperger's Syndrome. Our vision is to be a centre of excellence which promotes a positive understanding of Asperger's Syndrome and enables students to recognise their potential for independence and success. From the outset students will be encouraged to make informed choices and decisions about their future.

11 Highfields Road, Chasetown, Burntwood, Staffordshire  
WS7 4QR Tel: 01543 672 173 Email: [highfields@priorygroup.com](mailto:highfields@priorygroup.com)  
Website: [www.priorygroup.com/education](http://www.priorygroup.com/education)

**Home Manager:** Ben Wootton  
**Status:** Residential Home for young people with autism and associated learning difficulties

**Age Range:** 18-25  
**Placement Type:** Residential  
**Gender:** Mixed  
**Fees:** Available on request

### Special needs catered for

Priory Highfields offers a unique residential home for those with autism and associated learning difficulties. We have extensive experience of working with young adults on the autistic spectrum and provide a home for life for those who require specialist help to meet their needs.

### Specialist facilities

Highfields offers a range of high quality, residential accommodation within ordinary housing for young adults diagnosed with autism or associated moderate to severe learning difficulties. Each resident enjoys a personalised daily educational programme utilising the daily life therapy approach, work experience and education opportunities

### Our care ethos

To provide person-centred and valued life long residential placements for young people and adults who are diagnosed with autism or associated moderate to severe learning difficulties through a unique approach based on daily life, therapy and ordinary life principles. The daily life therapy approach seeks to reduce anxiety levels enabling residents to access a personalised, structured programme of leisure, life skills, education, work and life experiences. They are able to engage in daily life with increased confidence, self-esteem and dignity. We believe in good quality, individual care delivered by dedicated and well trained staff. Family and friends are encouraged to be in frequent and regular contact with residents and staff. Residents are supported in attending religious services of their choice in accordance with their person centred plan.

### Service provided

As well as providing residential care, educational programmes support the development of independence and life skills:

- Daily sports programme to disperse excess energy and attain emotional and physical composure necessary to access a learning state
- Learning activities provide intellectual stimulation
- Expressive arts such as music, art and drama provide opportunities for self-expression and communication supporting the overall goal of community based living
- Group dynamic develops confidence and teaches co-operation and relationship building
- Life skills teach basic independence skills such as toileting, eating properly, dressing and undressing
- Psychiatric support on a needs-led basis

## Queen Alexandra College

Court Oak Road, Harborne, Birmingham B17 9TG

Telephone: 0121 428 5050 Fax: 0121 428 5045

Email: [info@qac.ac.uk](mailto:info@qac.ac.uk) Website: [www.qac.ac.uk](http://www.qac.ac.uk)

**Established:** 1903

**Principal:** Alex Mellon – M.A.

**Status:** FE College

**Age Range:** 16+

**Number on Roll:** 150

**Type of College:** Mixed. Full/  
flexible boarding and day

**Teaching Staff:** 40

**Residential Care Staff:** 40

**Special Needs Support Staff:** 10

**Length of College Year:** 36-44 weeks

### Special needs catered for

The college caters for students who are blind or partially sighted. QAC also meets the individual needs of a limited number of students who have other disabilities with no visual impairment.

### Specialist facilities

The teaching, training and residential facilities are designed to give access to wheelchair users. There are extensive leisure and sports facilities including a well equipped gym and nearby swimming pool. The medical centre is staffed by qualified nurses. All computers and the Internet are equipped with screen enlargement and speech. The latest Braille technology is available. Hearing loops are provided where required.

### Support services provided

Well staffed residential facilities and a college-wide pastoral system are available to all students. Mobility, Braille and Life Skills Training is available from specialist staff. The college has work placement and employment officers and a strong liaison network with many support agencies.

### Home college links

The college promotes a partnership with parents, professionals and sponsors who are encouraged to play an active interest in college life. There is also a Parent Governor.

### General environment

The college stands on a 12 acre campus in Harborne, a quiet and attractive residential area. Harborne offers excellent amenities and easy access to Birmingham's city centre. Harborne is very accessible, being only minutes from the M5 which has links to the M6, M40 and M42. New Street Station is only minutes away and there are good links to the International Airport.

### Aims and philosophy

QAC creates challenging learning opportunities for people with visual impairment and/or other disabilities to realise their potential to live and work independently.

### Staff qualification and selection

Admission to the college is based upon a thorough initial assessment. This may include a residential visit. Our specialist staff are qualified to support individual needs throughout the extended curriculum.

## RNIB College Loughborough

**R**

Radmoor Road, Loughborough, Leicestershire LE11 3BS

Tel: 01509 611077 Fax: 01509 232013

Email: [enquiries@rnibcollege.ac.uk](mailto:enquiries@rnibcollege.ac.uk) Website: [www.rnibcollege.ac.uk](http://www.rnibcollege.ac.uk)

**Established:** 1989

**Acting Principal:** Tony Warren

**Age Range:** 16+

**Number of Learners:** 70

**Type of College:** Mixed, residential and day

**Status:** Specialist FE College

**Teaching Staff:** 15 plus learning support assistants

**Residential Support Staff:** 60

**Length of College Year:** 38 weeks

**Fees:** Free to user

### Special needs catered for

Many, but not all learners have a sight problem. Most learners have more than one difficulty or disability. Other disabilities that are welcomed are learning difficulties, mild to moderate autism, asperger's syndrome, physical mobility difficulties, chronic illness and hearing loss.

### Aims and philosophy

Learners may come to the college as the next stage in their education, a way of entering employment or a way of learning how to live independently. People come with a wide range of abilities and from a variety of social and ethnic backgrounds. The aim is to help you make the most of your potential. Programmes range from pre-entry level to level 3 qualifications. All learners follow an individually tailored programme, as we recognise that everyone is different.

### General environment

The college is a purpose-built, modern building that incorporates many features designed to improve independence for people with disabilities. The college was purposely built on campus with Loughborough College and works in close partnership to provide all of the opportunities that learners have in a mainstream setting. The college is also in the heart of Loughborough, so gives learners an instant integration into a supportive and friendly community. Learners who are residential live in the Stan Bell Centre, a modern and purpose-built block situated next to the college. The centre has 60 en-suite study bedrooms, all with their own broadband internet connection, telephone points, communal lounges, kitchens and a recreation room.

### Specialist facilities

All learners are assessed prior to commencing their programme and a unique package of support is then provided. Facilities include CCTV's, computer access technology, Braille embossers, an adaptation and transcription team, complimentary therapy and speech and language therapy.

### Support services provided

Additional disabilities, counselling services, religion, low vision clinic, medical services, classroom support, progress tutor, keyworker, rehabilitation and mobility officer and careers advice.

### Staff qualification and selection

The college operates an equal opportunities staff recruitment policy and all staff hold appropriate qualifications. All tutors and trainers are qualified and experienced teachers in working with people with disabilities.

**Rookery Hove** – Part of the Priory Group**22-24 Sackville Gardens, Hove, East Sussex BN3 4GH****Tel: 01273 202 520 Email: rookeryhove@priorygroup.com****Website: www.priorygroup.com/rookeryhove****Principal Officer: Mr Rob Bunting****Age Range: 18-35****Status: Mixed – Residential****Registered Manager: Loz Blume****Length of Year: 52 weeks****Fees: Available on request****Special needs catered for**

Young adults with Asperger's Syndrome and associated conditions requiring a 'higher education' in life development skills. They may have a history of challenging behaviour and need help developing strategies so they can appropriately manage their anxieties.

**Specialist facilities**

Rookery Hove is a specialist therapeutic unit providing education and essential life skills for young adults aged 18 to 35 with Asperger's Syndrome and associated difficulties. We provide education, independence, social skills and therapeutic programmes designed to enable the individual to progress towards more independent living.

**Support services provided**

Each resident will have an individual social and educational development programme lasting between 18 months and five years which is created in partnership with them and their support team to ensure their needs and ambitions are being met. Our dedicated staff team is experienced and qualified to provide specialist support services specifically for people on the autistic spectrum. Individuals will be assisted in their education programmes by our Skills for Life/Education co-ordinator. Strategies are developed for self-management of anxieties. Support in work and college placements and preparation for employment or higher education as well as opportunities to integrate into community life form an integral part of the programme.

**Care**

Our therapeutic approach offers individual care pathways tailored to each patient's needs, access to a psychiatrist and clinical psychologist support where necessary, occupational therapy, drama therapy, speech and language therapy as well as cognitive behaviour therapy.

**Education**

The service includes comprehensive educational packages accredited through a number of national organisations and opportunities for residents to study at local colleges and/or undertake work-based learning where appropriate.

**Aims and philosophy**

Rookery Hove helps individuals develop the life skills they need to go forward and become independent adults within the community. Ultimately, individuals will have the ability to make informed choices and decisions about matters which affect them.

## Rookery Radstock – Part of the Priory Group

**R**

**Wells Road, Radstock, Somerset BA3 3RS**  
**Tel: 01761 438 610 Email: rookeryradstock@priorygroup.com**  
**Website: www.priorygroup.com/rookeryradstock**

**Principal Officer: Ms Doreen Paisley**

**Age Range: 18-30**

**Status: Mixed – Residential**

**Length of Year: 52 weeks**

**Fees: Available on request**

### Special needs catered for

Young adults with Asperger's Syndrome and associated conditions requiring a 'higher education' in life development skills. They may have a history of challenging behaviour and need help developing strategies so they can appropriately manage their anxieties.

### Specialist facilities

Rookery Radstock is a specialist therapeutic unit providing education and essential life skills for young adults aged 18 to 30 with Asperger's Syndrome and associated difficulties. We provide education, independence, social skills and therapeutic programmes designed to enable the individual to progress towards more independent living.

### Support services provided

Each resident has an individual social and educational development programme lasting between three months and five years which is created in partnership with them and their support team to ensure their needs and ambitions are being met. Our dedicated staff team is experienced and qualified to provide specialist support services specifically for people on the autistic spectrum. Individuals are assisted in their education programmes by their Rookery Radstock personal tutor and local college learning support team. Support in work and college placements and preparation for employment or higher education as well as opportunities to integrate into community life form an integral part of the programme.

### Care

Our therapeutic approach offers individual care pathways tailored to each patient's needs, access to a psychiatrist and clinical psychologist support where necessary, occupational therapy, drama therapy, speech and language therapy as well as cognitive behaviour therapy.

### Education

The majority of our young adults attend courses at local educational establishments. A wide range of vocational and academic courses are on offer. We also offer education on site and can access personal tutors if appropriate. Work preparation and experience is also offered on and off site.

### Aims and philosophy

Rookery Radstock helps individuals develop the life skills they need to go forward and become independent adults within the community. Ultimately, individuals will have the ability to make informed choices and decisions about matters which affect them. Achievements include residents attending University, moving to supported living, learning to drive and receiving scholarships with The Prince's Trust.

## Find the Special School regionally at a glance...

School Name	Cotswold Chine School	Cruckton Hall School	Dawn House School	Eastwood Grange	Potterspurty Lodge School	Priority Fostering Services
Physical Impairment						
Blindness/Partial Sight						
Deaf/Hearing Impaired						
Emotional Behavioural Difficulties	■			■	■	■
Moderate Learning Difficulties	■		■			
Severe Learning Difficulties	■		■			
Autism/Asperger's/ Language Disorder	■	■	■		■	
Dyslexia						
Page	24	27	31	33	56	58
County/Borough	Glos	Shropshire	Notts	Derbyshire	Northants	Worcs
Boys/Girls/Mixed	Mixed	Boys	Mixed	Boys	Boys	Mixed
Age	9-19	8-19	5-19	11-16	8-18	0-18
Length of Year (Weeks)	39/52	36/52	39	38/52	38	
LEA, Independent, Non-maintained	Independent	DfE Approved	Non-Maintained	Independent	Independent	
Full board (FB)	FB	FB	FB	FB	FB	
Flexible board (FX)		FX			FX	
Fortnightly (F)						
Weekly (W)		W			W	
Daily (D)		D	D	D	D	
Telephone	01453 837550	01743 860206	01623 795361	01246 590255	01908 542912	01684 560333

<b>School Name</b>	<b>Queenswood School</b>	<b>Royal School for Deaf Derby</b>	<b>Rugeley Horizon</b>	<b>Sketchley Horizon</b>	<b>Sunfield</b>	<b>Talocher School</b>
<b>Physical Impairment</b>		■				
<b>Blindness/Partial Sight</b>						
<b>Deaf/Hearing Impaired</b>		■				
<b>Emotional Behavioural Difficulties</b>	■			■	■	■
<b>Moderate Learning Difficulties</b>	■		■	■		■
<b>Severe Learning Difficulties</b>			■		■	
<b>Autism/Asperger's/ Language Disorder</b>			■	■	■	
<b>Dyslexia</b>						
<b>Page</b>	60	64	65	69	76	78
<b>County/Borough</b>	Herefordshire	Derbyshire	Staffordshire	Leicestershire	West Midlands	Monmouthshire
<b>Boys/Girls/Mixed</b>	Mixed	Mixed	Mixed	Mixed	Mixed	Mixed
<b>Age</b>	11-19	3-19	5-19	8-19	6-19	11-18
<b>Length of Year (Weeks)</b>	38/52	38	Up to 52	38	52	38/52
<b>LEA, Independent, Non-maintained</b>	Independent	Non-Maintained	Independent	Independent	Independent	
<b>Full board (FB)</b>	FB	FB	FB		FB	FB
<b>Flexible board (FX)</b>						
<b>Fortnightly (F)</b>						
<b>Weekly (W)</b>		W				
<b>Daily (D)</b>	D	D	D	D		D
<b>Telephone</b>	<b>01531 670632</b>	<b>01332 362512</b>	<b>01889 504400</b>	<b>01455 890023</b>	<b>01562 882253</b>	<b>01600 740777</b>

School Name	Wings Notts School
Physical Impairment	
Blindness/Partial Sight	
Deaf/Hearing Impaired	
Emotional Behavioural Difficulties	■
Moderate Learning Difficulties	■
Severe Learning Difficulties	
Autism/Asperger's/ Language Disorder	■
Dyslexia	
Page	85
County/Borough	Notts
Boys/Girls/Mixed	Mixed
Age	11-17
Length of Year (Weeks)	38/52
LEA, Independent, Non-maintained	Independent
Full board (FB)	FB
Flexible board (FX)	
Fortnightly (F)	
Weekly (W)	
Daily (D)	
Telephone	<b>01636 817430</b>

Breckenbrough School	Cedar House School	Cumberland School	Derwent House School
■	■	■	■
	■	■	■
	■		
■	■	■	■
15	17	28	29
N. Yorks	Lancs	Lancs	Lancs
Boys	Mixed	Mixed	Mixed
9-17	7-16	11-16	11-16
38			
Independent	Independent	Independent	Independent
FB	FB		
FX			
W			
D	D	D	D
<b>01845 587238</b>	<b>01524 271181</b>	<b>01772 284435</b>	<b>01254 691195</b>

School Name	Doncaster School for the Deaf	Eden Grove	Fullerton House	Kisimul School	Lakeside School	Oliver House
Physical Impairment						
Blindness/Partial Sight						
Deaf/Hearing Impaired	■					
Emotional Behavioural Difficulties		■	■	■	■	■
Moderate Learning Difficulties		■				■
Severe Learning Difficulties			■	■	■	■
Autism/Asperger's/ Language Disorder		■	■	■		■
Dyslexia						
Page	32	34	37	44	45	53
County/Borough	S. Yorks	Cumbria	W. Yorks	Lincolnshire	Liverpool	Lancs
Boys/Girls/Mixed	Mixed	Mixed	Mixed	Mixed	Mixed	Mixed
Age	5-16	8-19	8-19	8-19	5-13	6-19
Length of Year (Weeks)	52	38/52		38/52	38	52
LEA, Independent, Non-maintained	Independent	Independent		Independent	Independent	Independent
Full board (FB)	FB	FB	FB	FB	FB (off-site)	FB
Flexible board (FX)	FX	FX		FX		
Fortnightly (F)						
Weekly (W)	W			W		
Daily (D)	D	D		D	D	D
Telephone	01302 386710	01768 361346	0800 0556789	01522 868279	0151 4877211	01257 220011

# Northern England/Scotland

School Name	Pontville Residential School	Rossendale School	Sheridan School	St Vincent's School	Troup House	West Kirby Residential
Physical Impairment						
Blindness/Partial Sight				■		
Deaf/Hearing Impaired						
Emotional Behavioural Difficulties		■	■		■	■
Moderate Learning Difficulties	■		■	■	■	■
Severe Learning Difficulties					■	
Autism/Asperger's/ Language Disorder	■	■	■	■	■	■
Dyslexia	■	■				
Page	55	63	68	75	79	81
County/Borough	Lancs	Lancashire	Norfolk	Merseyside	Aberdeenshire	Wirral
Boys/Girls/Mixed	Mixed	Mixed	Mixed	Mixed	Mixed	Mixed
Age	5-19	8-16	10-19	4-19	8-16	5-16+
Length of Year (Weeks)	38	38	38-52	38		38
LEA, Independent, Non-maintained	Independent	Independent	Independent	Non-maintained	Independent	Non-Maintained
Full board (FB)	FB			FB	FB	
Flexible board (FX)				FX	FX	
Fortnightly (F)						
Weekly (W)	W	W		W		W
Daily (D)	D	D		D		D
Telephone	01695 578734	01706 822779	01366 726040	0151 2289968	01261 851584	0151 6323201

School Name	Westmorland School	Wilsic Hall	Wings School	Witherslack Hall School
Physical Impairment				
Blindness/Partial Sight				
Deaf/Hearing Impaired				
Emotional Behavioural Difficulties	■		■	■
Moderate Learning Difficulties	■	■	■	■
Severe Learning Difficulties		■		
Autism/Asperger's/ Language Disorder	■	■	■	■
Dyslexia				
Page	82	83	84	86
County/Borough	Lancs	S. Yorks	Cumbria	Cumbria
Boys/Girls/Mixed	Mixed	Mixed	Mixed	Boys
Age	5-11	11-19	11-17	11-19
Length of Year (Weeks)			38/52	38
LEA, Independent, Non-maintained	Independent		Independent	Independent
Full board (FB)		FB	FB	FB
Flexible board (FX)				FX
Fortnightly (F)				
Weekly (W)				
Daily (D)	D			D
Telephone	01257 278899	0800 0556789	01539 562006	01539 552397

# Southern England

School Name	Appleford School	Centre Academy East Anglia	Centre Academy London	Chailey Heritage School	Chelfham Mill School	Chelfham Senior School
Physical Impairment				■		
Blindness/Partial Sight				■	■	
Deaf/Hearing Impaired				■		
Emotional Behavioural Difficulties					■	■
Moderate Learning Difficulties	■	■	■		■	
Severe Learning Difficulties	■			■		■
Autism/Asperger's/ Language Disorder		■	■		■	■
Dyslexia	■	■	■		■	
Page	14	18	19	20	21	22
County/Borough	Wilts	Suffolk	London	E. Sussex	Devon	West Devon
Boys/Girls/Mixed	Mixed	Mixed	Mixed	Mixed	Boys	Mixed
Age	7-13	8-16	8-19	3-19	7-16	11-19
Length of Year (Weeks)	36	36	38	38/52	38/52	38/52
LEA, Independent, Non-maintained	DfE Approved	Independent	Independent	Non-Maintained	Independent	Independent
Full board (FB)	FB	FB		FB	FB	FB
Flexible board (FX)	FX			FX	FX	FX
Fortnightly (F)				F		
Weekly (W)	W			W		
Daily (D)	D	D	D	D	D	D
Telephone	01980 621020	01449 736404	0207 7382344	01825 724444	01271 850448	01822 840379

School Name	Chilworth House School	Coxlease School	Coxlease Abbeymead	Fairley House School	Farleigh College	Grateley House School
Physical Impairment						
Blindness/Partial Sight						
Deaf/Hearing Impaired						
Emotional Behavioural Difficulties	■	■	■			■
Moderate Learning Difficulties	■	■		■		■
Severe Learning Difficulties		■				
Autism/Asperger's/ Language Disorder					■	■
Dyslexia				■		
Page	23	25	26	35	36	38
County/Borough	Oxon	Hampshire	Hampshire	London	Somerset	Hampshire
Boys/Girls/Mixed	Mixed	Mixed	Mixed	Mixed	Mixed	Mixed
Age	5-18	9-18	9-16	5-14	11-19	9-19
Length of Year (Weeks)		38/52		38	38	38
LEA, Independent, Non-maintained	Independent			Independent	Independent	Independent
Full board (FB) Flexible board (FX) Fortnightly (F) Weekly (W) Daily (D)		FB    D			FB    D	FB    D
Telephone	01844 339077	02380 283633	02380 282515	0207 9765456	01373 814980	0800 2889779

# Southern England

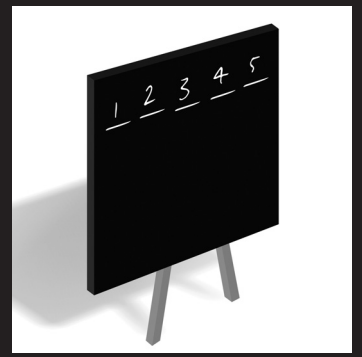
School Name	High Close School	Hill House School	Ingfield Manor School	Jacques Hall	The Loddon School	The Marchant Holiday School
Physical Impairment			■			
Blindness/Partial Sight						
Deaf/Hearing Impaired						
Emotional Behavioural Difficulties	■	■		■	■	■
Moderate Learning Difficulties	■		■	■		■
Severe Learning Difficulties	■	■		■	■	
Autism/Asperger's/ Language Disorder		■			■	■
Dyslexia						■
Page	40	41	42	43	47	48
County/Borough	Berks	Hampshire	W. Sussex	Essex	Hampshire	Somerset
Boys/Girls/Mixed	Mixed	Mixed	Mixed	Mixed	Mixed	Boys
Age	10-16	11-19	3-16	11-18	8-19	5-12
Length of Year (Weeks)	39	52	38	38/52	52	36
LEA, Independent, Non-maintained	Non-Maintained	Independent	Non-Maintained	Independent	Independent	Independent
Full board (FB)	FB	FB		FB	FB	
Flexible board (FX)						FX
Fortnightly (F)						F
Weekly (W)			W			
Daily (D)	D		D	D		D
Telephone	0118 9785767	0800 2889779	01403 782294	01255 870311	01256 882394	01963 33234

School Name	Mark College	Meath School	Meldreth Manor	North Hill House	Penn School	Prior's Court School
Physical Impairment			■		■	
Blindness/Partial Sight			■			
Deaf/Hearing Impaired			■		■	
Emotional Behavioural Difficulties				■		
Moderate Learning Difficulties		■		■	■	■
Severe Learning Difficulties			■			■
Autism/Asperger's/ Language Disorder		■		■	■	■
Dyslexia	■					
Page	49	50	51	52	54	57
County/Borough	Somerset	Surrey	Herts	Somerset	Bucks	Berks
Boys/Girls/Mixed	Mixed	Mixed	Mixed	Boys	Mixed	Mixed
Age	10-19	4-11	6-19	7-18	11-19	5-19
Length of Year (Weeks)	35	39	38	38	38	38
LEA, Independent, Non-maintained	DfE Approved	Non-Maintained	Independent	Independent		Independent
Full board (FB)	FB	FB	FB	FB		FB
Flexible board (FX)			FX			FX
Fortnightly (F)						
Weekly (W)	W		W		W	W
Daily (D)	D	D	D	D	D	D
Telephone	<b>01278 641632</b>	<b>01932 872302</b>	<b>01763 268000</b>	<b>01373 466222</b>	<b>01494 812139</b>	<b>01635 247202</b>

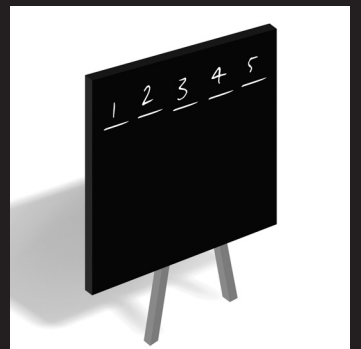
# Southern England

School Name	Priory Lodge School	The School for Profound Education	The Sheiling School	St Elizabeth's School	St Joseph's School	St Mary's School
Physical Impairment		■		■		■
Blindness/Partial Sight		■				
Deaf/Hearing Impaired		■				■
Emotional Behavioural Difficulties			■			
Moderate Learning Difficulties	■		■	■	■	■
Severe Learning Difficulties		■	■	■	■	
Autism/Asperger's/ Language Disorder	■		■	■	■	■
Dyslexia						
Page	59	66	67	70	71	73
County/Borough	London	Surrey	Hants	Hertfordshire	Surrey	E. Sussex
Boys/Girls/Mixed	Mixed	Mixed	Mixed	Mixed	Mixed	Mixed
Age	7-19	5-25	6-16/16-19	5-19+	5-14/14-19	7-19
Length of Year (Weeks)	38	52	38	38	38	38
LEA, Independent, Non-maintained	Independent	Non-Maintained	Independent	Non-maintained	Non-Maintained	Non-Maintained
Full board (FB)		FB	FB	FB	FB	FB
Flexible board (FX)		FX			FX	FX
Fortnightly (F)		F			F	F
Weekly (W)		W	W		W	W
Daily (D)	D	D	D	D	D	D
Telephone	0208 3924410	01737 365810	01425 477488	01279 844270	01483 272449	01424 730740

School Name	St Rose's School	Tadley Horizon	Unsted Park School	Woodstock House
Physical Impairment	■			
Blindness/Partial Sight	■			
Deaf/Hearing Impaired	■			
Emotional Behavioural Difficulties		■	■	■
Moderate Learning Difficulties	■	■	■	
Severe Learning Difficulties		■	■	■
Autism/Asperger's/ Language Disorder		■	■	■
Dyslexia				
Page	74	77	80	87
County/Borough	Gloucestershire	Hampshire	Surrey	Surrey
Boys/Girls/Mixed	Mixed	Mixed	Mixed	Mixed
Age	2-19	5-19	7-19	8-19
Length of Year (Weeks)	38	52	38	38/52
LEA, Independent, Non-maintained	Non-maintained	Independent	Independent	Independent
Full board (FB)	FB	FB	FB	FB
Flexible board (FX)	FX		FX	FX
Fortnightly (F)	F			
Weekly (W)	W			W
Daily (D)	D	D	D	D
Telephone	<b>01453 763793</b>	<b>01189 817720</b>	<b>01483 892061</b>	<b>0208 3352570</b>



Call  
**01527  
834469**  
to discuss  
advertising  
options  
within  
Special  
Schools  
in Britain



**Find a Further Education establishment  
or Continuing Care Centre at a glance...**

<b>School Name</b>	<b>Farleigh FE College Frome</b>	<b>Farleigh FE College Swindon</b>	<b>The Gatehouse</b>	<b>Oakhurst Lodge</b>	<b>Priory Coleg Wales</b>	<b>Priory Highfields</b>
<b>Physical Impairment</b>						
<b>Blindness/Partial Sight</b>						
<b>Deaf/Hearing Impaired</b>						
<b>Emotional Behavioural Difficulties</b>	■	■	■	■	■	■
<b>Moderate Learning Difficulties</b>	■	■	■	■		■
<b>Severe Learning Difficulties</b>			■	■		■
<b>Autism/Asperger's/ Language Disorder</b>	■	■	■	■	■	■
<b>Dyslexia</b>						
<b>Page</b>	90	91	92	93	94	95
<b>County/Borough</b>	Somerset	Wiltshire	Hampshire	Hampshire	Monmouthshire	Staffordshire
<b>Boys/Girls/Mixed</b>	Mixed	Mixed	Mixed	Mixed	Mixed	Mixed
<b>Age</b>	16-25	16-25	16-25	16-25	16-25	18-25
<b>Length of Year (Weeks)</b>	38	38		52		
<b>LEA, Independent, Non-maintained</b>	Independent	Independent			Independent	
<b>Full board (FB)</b>	FB	FB	FB	FB	FB	FB
<b>Flexible board (FX)</b>						
<b>Fortnightly (F)</b>						
<b>Weekly (W)</b>						
<b>Daily (D)</b>	D	D			D	
<b>Telephone</b>	<b>01373 475470</b>	<b>01793 719500</b>	<b>00118 9817720</b>	<b>0800 288 9779</b>	<b>01793 719500</b>	<b>01543 684948</b>

## Further Education

<b>College/Centre Name</b>	<b>Queen Alexandra</b>	<b>RNIB College Loughborough</b>	<b>Rookery Hove</b>	<b>Rookery Radstock</b>
<b>Physical Impairment</b>	■	■		
<b>Blindness/Partial Sight</b>	■	■		
<b>Deaf/Hearing Impaired</b>	■	■		
<b>Emotional Behavioural Difficulties</b>		■	■	■
<b>Moderate Learning Difficulties</b>	■	■		
<b>Severe Learning Difficulties</b>				
<b>Autism/Asperger's/ Language Disorder</b>		■	■	■
<b>Dyslexia</b>		■		
<b>Page</b>	96	97	98	99
<b>County/Borough</b>	Birmingham	Leics	East Sussex	Somerset
<b>Boys/Girls/Mixed</b>	Mixed	Mixed	Mixed	Mixed
<b>Age</b>	16+	16+	18-35	18-30
<b>Length of Year (Weeks)</b>	36-44	38	52	52
<b>LEA, Independent, Non-maintained</b>		Specialist FE		
<b>Full board (FB)</b>	FB	FB	FB	FB
<b>Flexible board (FX)</b>	FX			
<b>Fortnightly (F)</b>				
<b>Weekly (W)</b>				
<b>Daily (D)</b>	D	D		
<b>Telephone</b>	<b>0121 4285050</b>	<b>01509 611077</b>	<b>01273 202520</b>	<b>01761 438610</b>



# Building a brighter future for children with autism

**Every child is different. Which is why our autism-specific schools provide a truly child-centred learning experience**

We work closely with each student to help them to achieve their full potential and prepare for adulthood.

The National Autistic Society is the UK's leading charity for people affected by autism. Our expert support and services are based on over 45 years' experience and are tailored to each person's needs.

Find out more about our services:  
call us on **0117 974 8430** or email **services@nas.org.uk**  
**[www.autism.org.uk/schools](http://www.autism.org.uk/schools)**

The National Autistic Society is a charity registered in England and Wales (269425) and in Scotland (SCO39427).

**Broomhayes School  
& Children's Centre**  
Devon (10-23 yrs)

**Daldorch House School**  
East Ayrshire (5-21 yrs)

**Helen Allison School**  
Kent (5-19 yrs)

**Radlett Lodge School**  
Hertfordshire (4-16 yrs)

**Robert Ogden School**  
South Yorkshire (7-19 yrs)

**Sybil Elgar School**  
Middlesex (11-19 yrs)

"I think at the end of the day school  
has been his lifeline." Parent, The Robert Ogden School, 2009



Accept difference. Not indifference.

# Integrated Pathways

Priory Education Services is the country's leading independent provider of specialist education and care for children and young people from age five and upwards.

We offer a unique integration of education, care and therapy to young people with a variety of complex needs including:

- **Asperger's Syndrome**
- **Autistic spectrum disorders**
- **Behavioural, emotional and social difficulties**
- **Specific learning difficulties and language disorders**

The group includes 30 specialist schools, colleges and care homes nationwide, together with an emergency placement service and fostering services.

Options include:

- Day and extended day
- Up to 52 week residential
- Post 16
- Emergency placements
- Weekly boarding
- Respite care

**PRIORY**  
EDUCATION SERVICES

**To request an information pack, arrange a visit or to make a referral please contact us:**

**0845 2 774679**

education@priorygroup.com    [www.priorygroup.com/education](http://www.priorygroup.com/education)

*Unique services for unique young people*